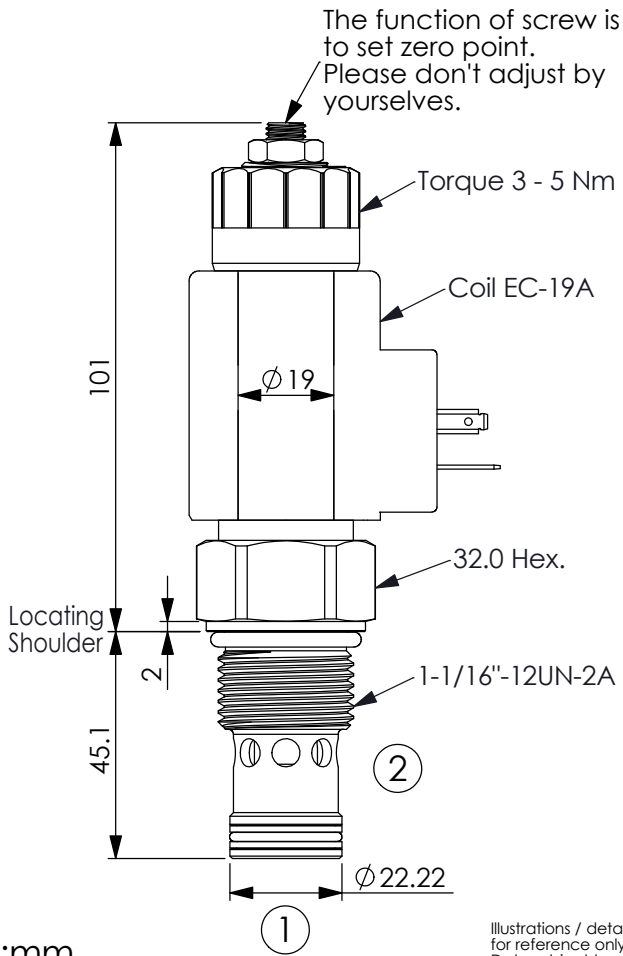


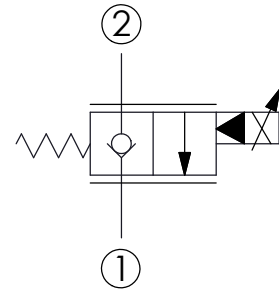
FLOW CONTROL VALVE (Electro-Proportional, Normally Closed)

Ordering Code: **PEP-12W-X-Y-N-Z**



UNIT:mm

Illustrations / detail are for reference only. Data subject to change.

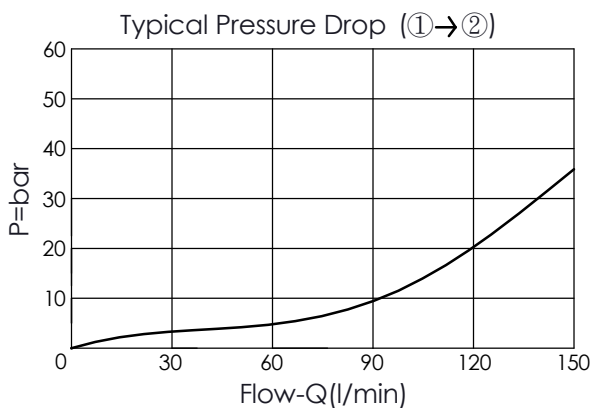
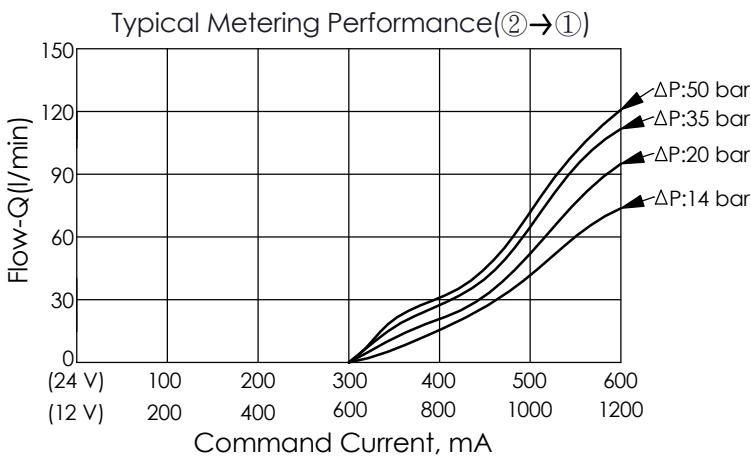


TECHNICAL DATA

Max.Operating pressure:	260	bar
Rated flow:	70	l/min (Refer To Performance Chart)
Cavity-Tooling:	12W-2	
Installation torque:	45 - 55	Nm
Weight:(with Coil)	0.603	kg
(without Coil)	0.363	kg

Coils must be ordered separately

(5 drops/minute) max.at 260 bar



X	STRUCTURE
2D	2 Ports · 22 Watt. Coil Ø 19 mm tube

Y	OPERATION
01	Normally-Closed No Reverse Flow Energized

Z	FLOW
	NOMINAL CAPACITY
0700	0 - 70 LPM