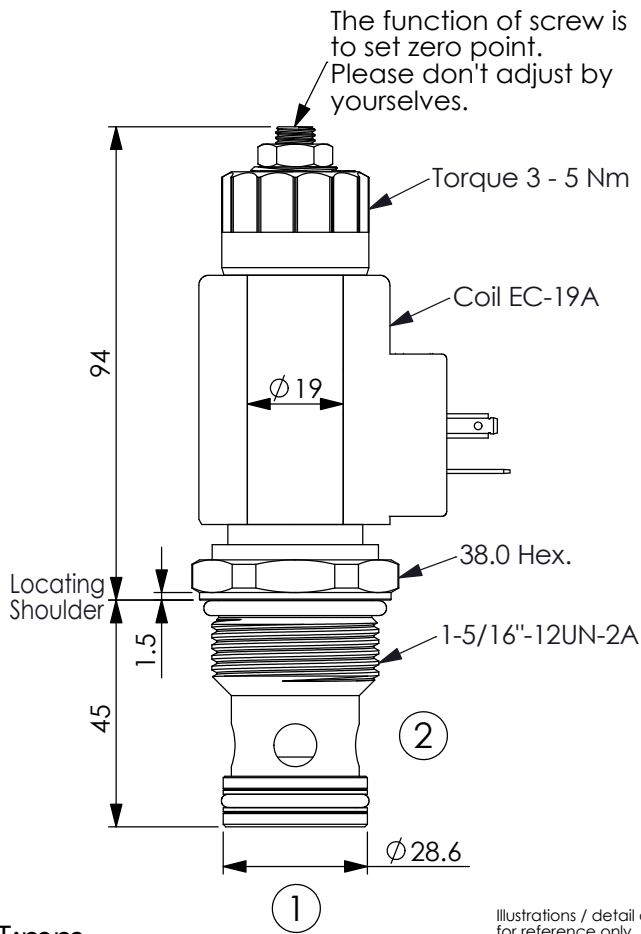


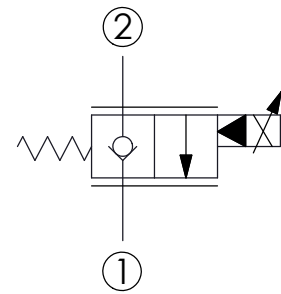
## FLOW CONTROL VALVE (Electro-Proportional, Normally Closed)

Ordering Code: **PEP-16W-X-Y-N-Z**



UNIT:mm

Illustrations / detail are for reference only. Data subject to change.



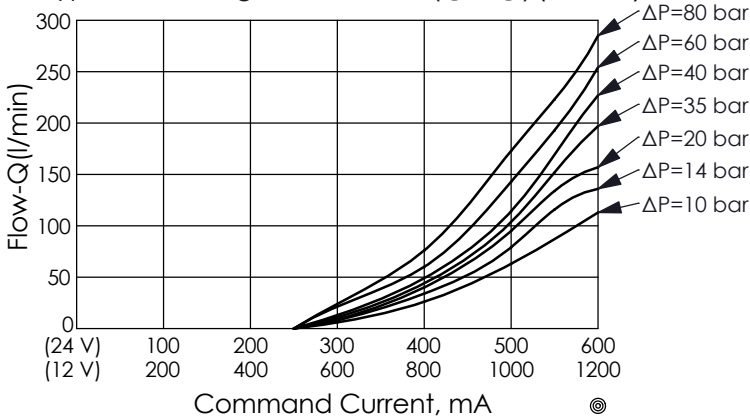
### TECHNICAL DATA

Max.Operating pressure:	260	bar
Rated flow:	100	l/min (Refer To Performance Chart)
Cavity-Tooling:	16W-2	
Installation torque:	60 - 70	Nm
Weight:(with Coil)	0.67	kg
(without Coil)	0.43	kg

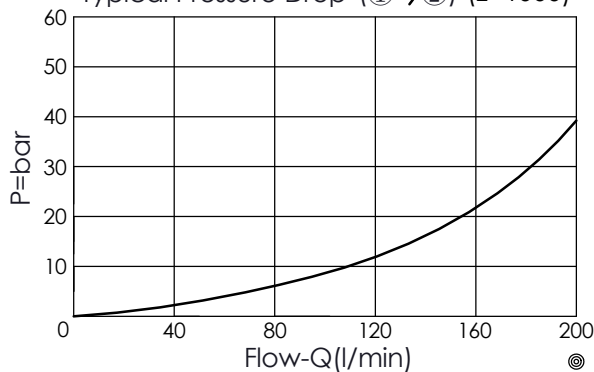
Coils must be ordered separately

(5 drops/minute) max.at 260 bar

Typical Metering Performance (②→①) (Z=1000)



Typical Pressure Drop (①→②) (Z=1000)



<b>X</b>	<b>STRUCTURE</b>	
<b>2D</b>	2 Ports · 22 Watt. Coil	
	Ø 19 mm tube	
<b>Y</b>	<b>OPERATION</b>	
<b>01</b>	Normally-Closed	
	No Reverse Flow Energized	
<b>Z</b>	<b>FLOW</b>	
	NOMINAL CAPACITY	
<b>1000</b>	0 - 100 LPM	