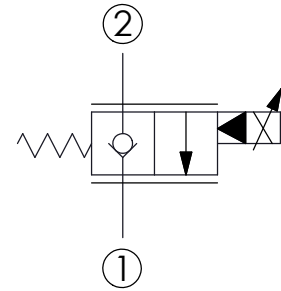
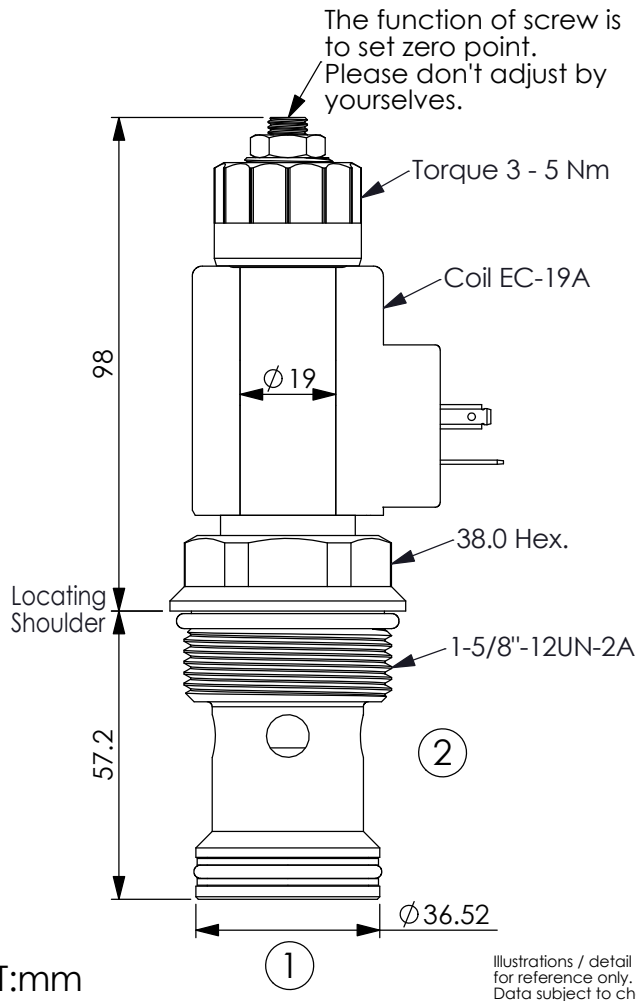


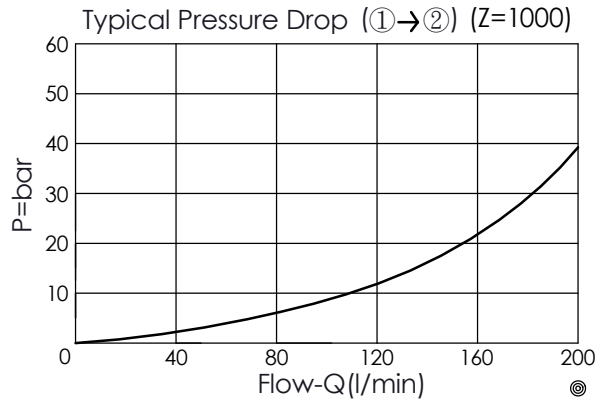
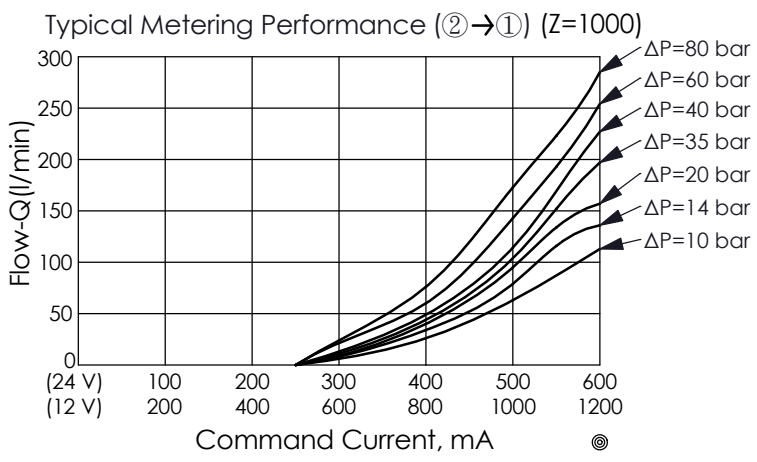
FLOW CONTROL VALVE (Electro-Proportional, Normally Closed)

Ordering Code: **PEP-20W-X-Y-N-Z**



TECHNICAL DATA

Max. Operating pressure:	260 bar
Rated flow:	100 l/min (Refer to $\Delta P=10$ bar)
Cavity-Tooling:	20W-2
Installation torque:	110 - 130 Nm
Weight:(with Coil)	0.886 kg
(without Coil)	0.646 kg
Coils must be ordered separately	
(5 drops/minute) max.at 260 bar	



X	STRUCTURE	
2D	2 Ports - 22 Watt. Coil	
	ϕ 19 mm tube	
Y	OPERATION	
01	Normally-Closed	
	No Reverse Flow Energized	
Z	FLOW	
	NOMINAL CAPACITY	
1000	0 - 100 LPM	