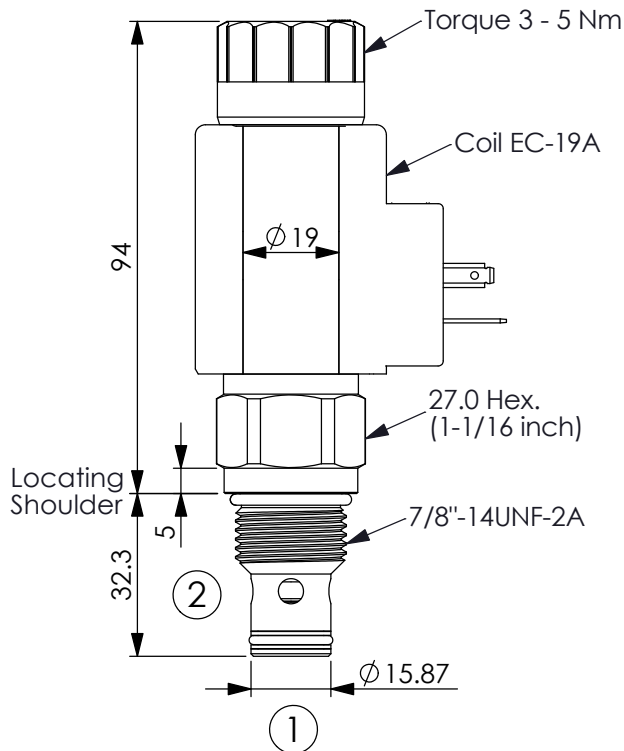


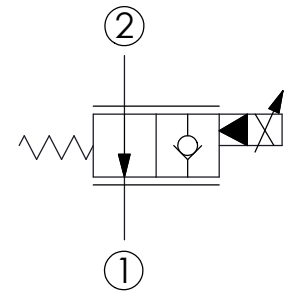
## FLOW CONTROL VALVE (Electro-Proportional, Normally Open)

Ordering Code: **PEP-10W-2D-X-Y-Z**



UNIT:mm

Illustrations / detail are for reference only. Data subject to change.



### TECHNICAL DATA

Max.Operating pressure: 260 bar

Rated flow: 45 l/min  
(Refer To Performance Chart)

Cavity-Tooling: 10W-2

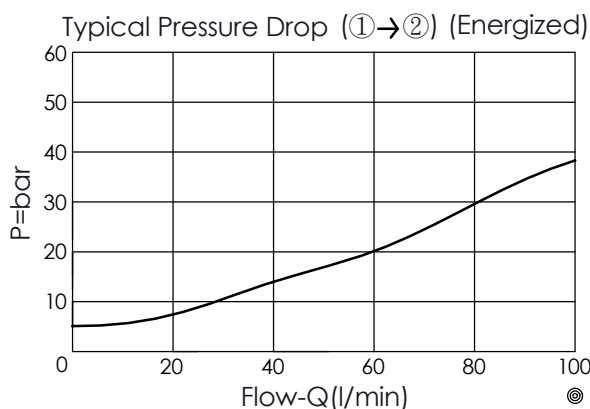
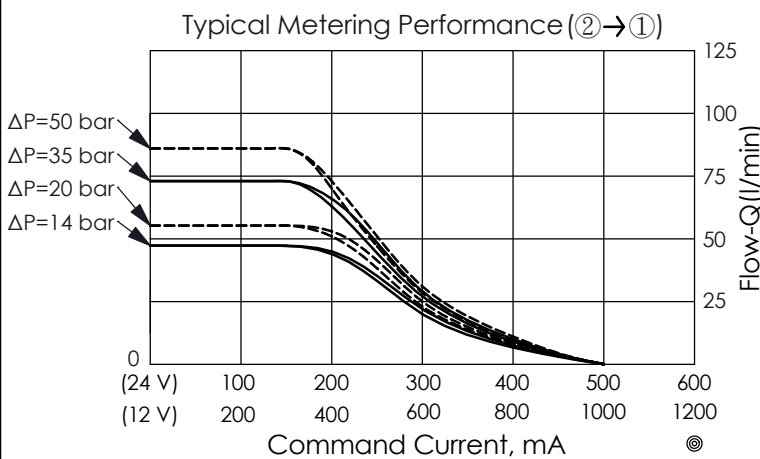
Installation torque: 35 - 45 Nm

Weight:(with Coil) 0.527 kg  
(without Coil) 0.287 kg

Coils must be ordered separately

(5 drops/minute) max.at 260 bar

2 Ports · 22 Watt. Coil  $\phi$  19 mm tube



X	OPERATION	
02	Normally-Open, Port ② to Port ①, When Energized, Port ① to Port ②, No Reverse Flow	

Y	OPTIONS	
N	Non-adjustable	
P	Push Style Manual Override	

Z	FLOW	
	NOMINAL CAPACITY	
0450	0 - 45 LPM	