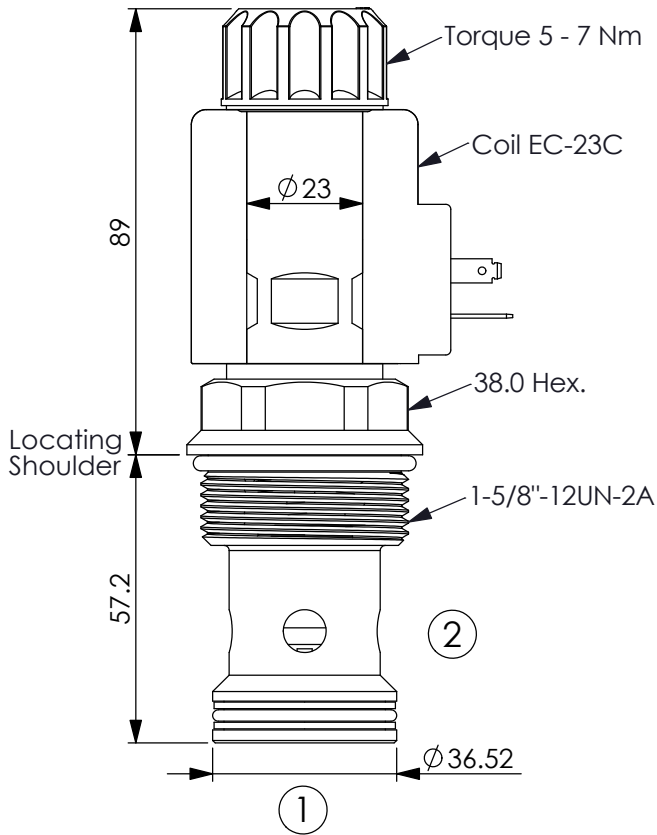


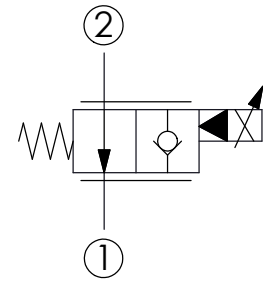
## FLOW CONTROL VALVE (Electro-Proportional, Normally Open)

Ordering Code: **PEP-20W-2G-X-Y-Z**



UNIT:mm

Illustrations / detail are for reference only. Data subject to change.



### TECHNICAL DATA

Max.Operating pressure: 260 bar

Rated flow: 95 l/min  
(Refer To Performance Chart)

Cavity-Tooling: 20W-2 (20WB-2)

Installation torque: 110 - 130 Nm

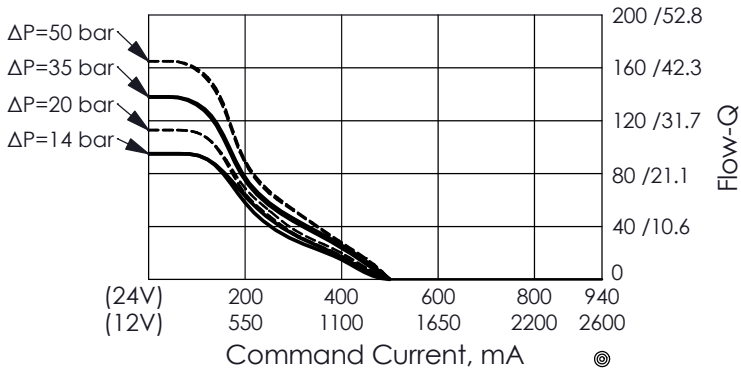
Weight:(with Coil) 1.059 kg  
(without Coil) 0.709 kg

Coils must be ordered separately

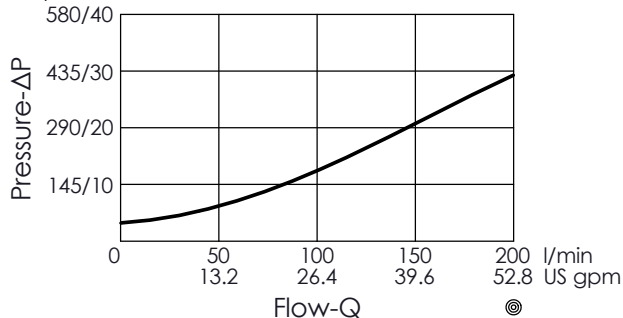
(5 drops/minute) max.at 260 bar

2 Ports · 17 Watt. Coil  $\phi$  23 mm tube

Typical Metering Performance (②→①) l/min /US gpm



Typical Pressure Drop (①→②) (Energized)



### X OPERATION

**02** Normally-Open, Port ② to Port ①. When Energized, Port ① to Port ②, No Reverse Flow

### Y OPTIONS

**N** Non-adjustable



### Z FLOW

NOMINAL CAPACITY

**1000** 0 - 100 LPM