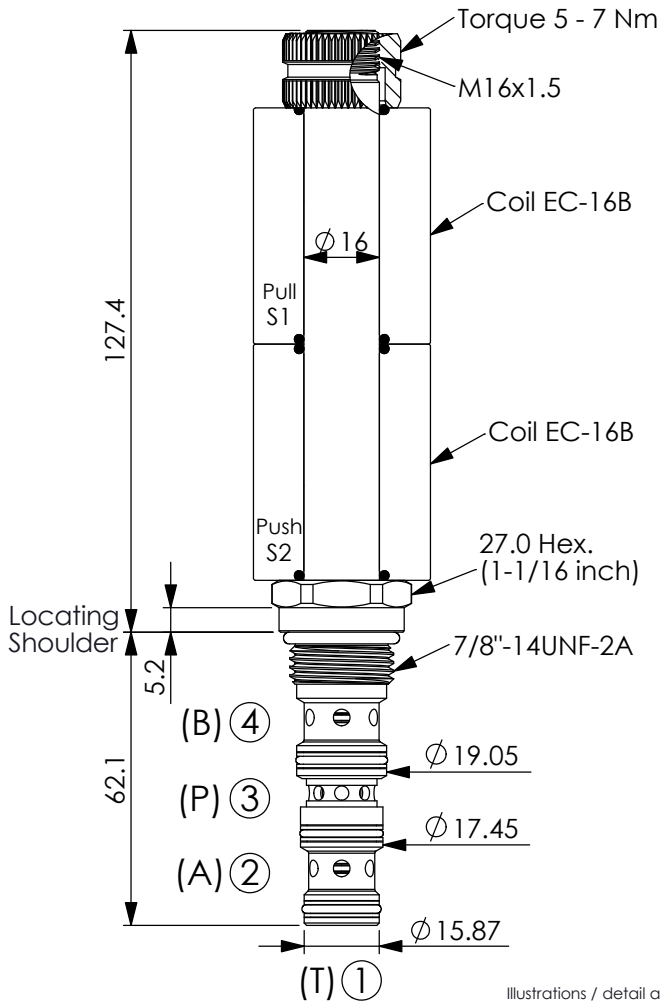


PROPORTIONAL SOLENOID DIRECTIONAL VALVES (4-Way, 3-Position, Spring Centred)

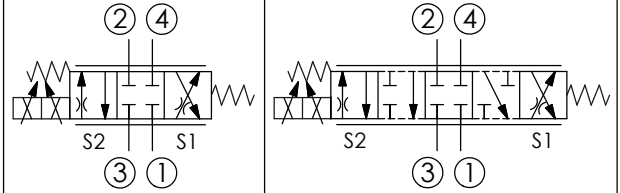
Ordering Code: **PES-10W-4C-X-Y-Z**



UNIT:mm

Illustrations / detail are for reference only. Data subject to change.

TRANSITION:



TECHNICAL DATA

Max. Operating pressure: 250 bar

Rated flow ($\Delta P=10$ bar): 22 l/min
(Refer To Performance Chart)

Cavity-Tooling: 10W-4

Installation torque: 25 - 35 Nm

Weight: 0.288 kg

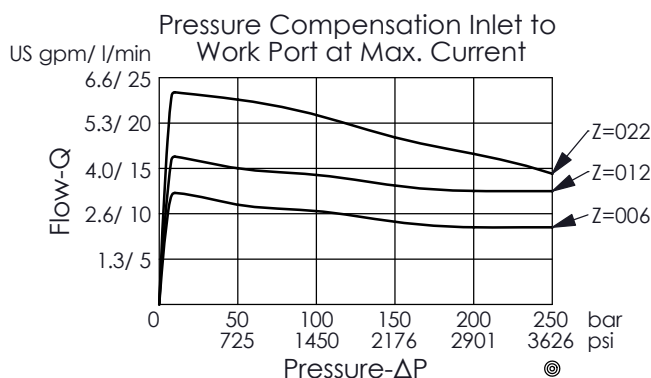
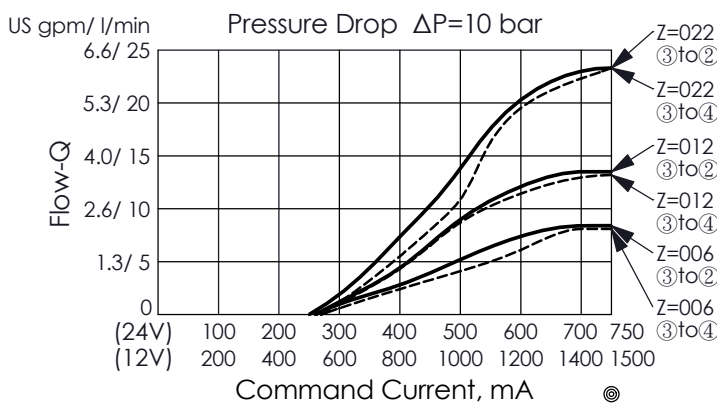
Hysteresis: <4%

Threshold current:
0.5 A (12V DC coil)
0.25 A (24V DC Coil)

Maximum control current:
1.5 A (12V DC coil)
0.8 A (24V DC Coil)

Coils must be ordered separately

4 Ports - 26 Watt. Coil
 ϕ 16 mm tube



X	OPERATION	
22	Spool 4-Ways, 3-Positions, Blocked Centre	

Y	OPTIONS	
N	Non-adjustable	

Z	FLOW	
022	22 LPM	
012	12 LPM	
006	6 LPM	