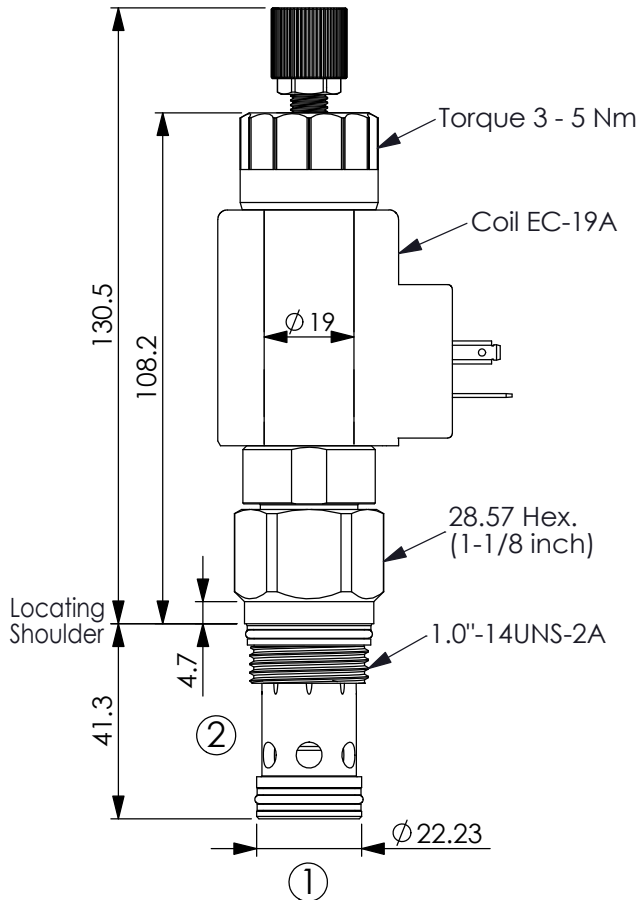
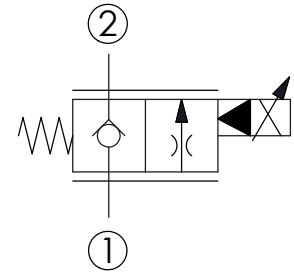


Ordering Code: **PEV-5A-2D-X-Y-Z**



UNIT:mm

Illustrations / detail are for reference only. Data subject to change.



### TECHNICAL DATA

Max.Operating pressure:	350 bar
Rated flow:	120 l/min (Refer To Performance Chart)
Cavity-Tooling:	5A-2
Installation torque:	60 - 70 Nm
Weight:(with Coil)	0.64 kg
(without Coil)	0.40 kg

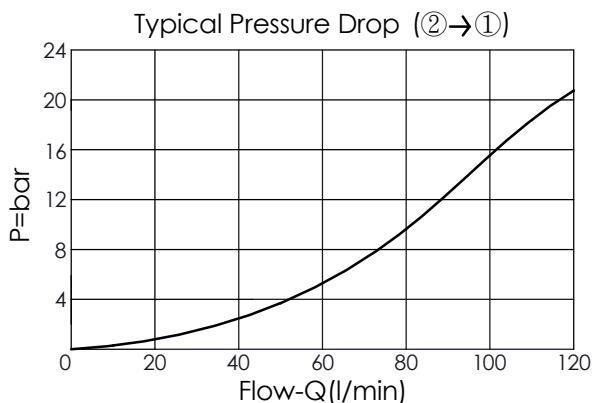
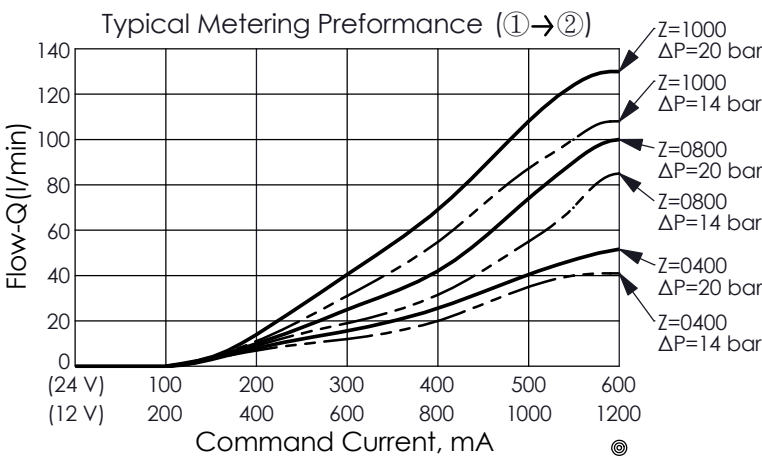
**Leakage at  $\Delta P$  of 140 bar  
Approximately 40 cc/minute maximum**

Typical hysteresis less than 4% of rated current at 10 bar pressure drop - Pulse Width Modulated(PWM)

Recommended PWM frequency  
60 - 150 HZ, application dependent,  
140 HZ typical

Coils must be ordered separately

2 Ports - 22 Watt. Coil  $\phi$  19 mm tube



### X OPERATION

**09** Normally-Closed, No Reverse Flow Energized, Nose-in, Side-out Operation

### Y OPTIONS

<b>N</b>	Non-adjustable	
<b>M</b>	Manual Override (Emergency Manual Proportional Flow Adjustment)	
<b>P</b>	Push Style Manual Override	

### Z FLOW

NOMINAL CAPACITY

<b>0400</b>	0 - 40 LPM
<b>0800</b>	0 - 80 LPM
<b>1000</b>	0 - 100 LPM

\*If there is a requirement for factory minimum flow setting (port ③), please contact Winner sales department.