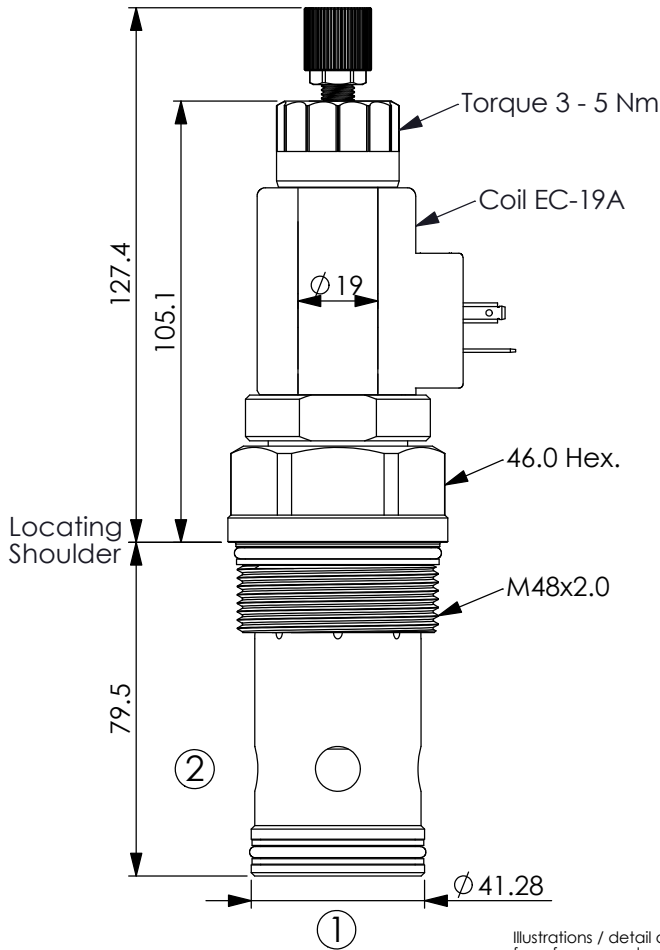


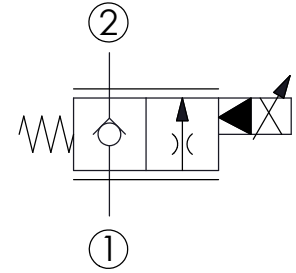
FLOW CONTROL VALVE (Electro-Proportional, Normally Closed, Fast-acting)

Ordering Code: **PEV-18A-2D-X-Y-Z**



UNIT:mm

Illustrations / detail are for reference only. Data subject to change.



TECHNICAL DATA

Max.Operating pressure:	350 bar
Rated flow:	320 l/min
Cavity-Tooling:	18A-2 (18AB-2)
Installation torque:	200 - 215 Nm
Weight:(with Coil)	1.49 kg
(without Coil)	1.25 kg

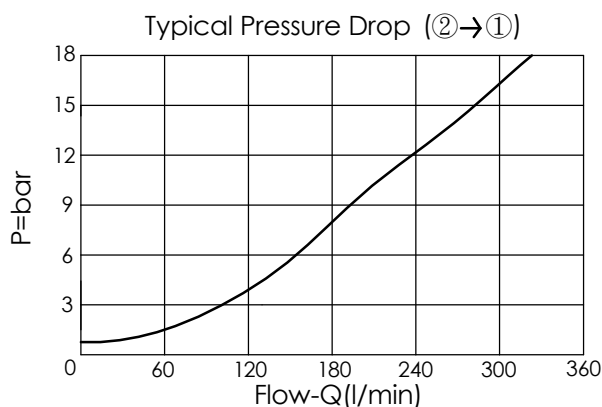
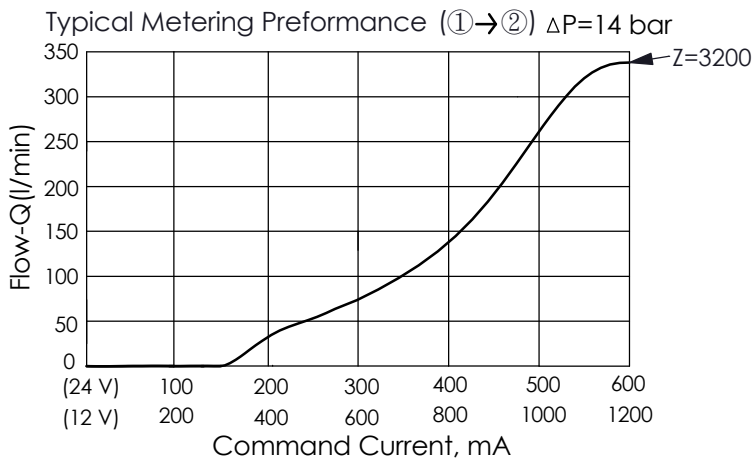
**Leakage at ΔP of 140 bar
Approximately 40 cc/minute maximum**

Typical hysteresis less than 4% of rated current at 10 bar pressure drop - Pulse Width Modulated (PWM)

Recommended PWM frequency 60 - 150 HZ, application dependent, 140 HZ typical

Coils must be ordered separately

2 Ports · 22 Watt. Coil ϕ 19 mm tube



X	OPERATION
09	Normally-Closed, No Reverse Flow Energized, Nose-in, Side-out Operation

Y	OPTIONS
N	Non-adjustable
M	Manual Override (Emergency Manual Proportional Flow Adjustment)
P	Push Style Manual Override

Z	FLOW NOMINAL CAPACITY
3200	0 - 320 LPM

* If there is a requirement for factory minimum flow setting (port 3), please contact Winner sales department.