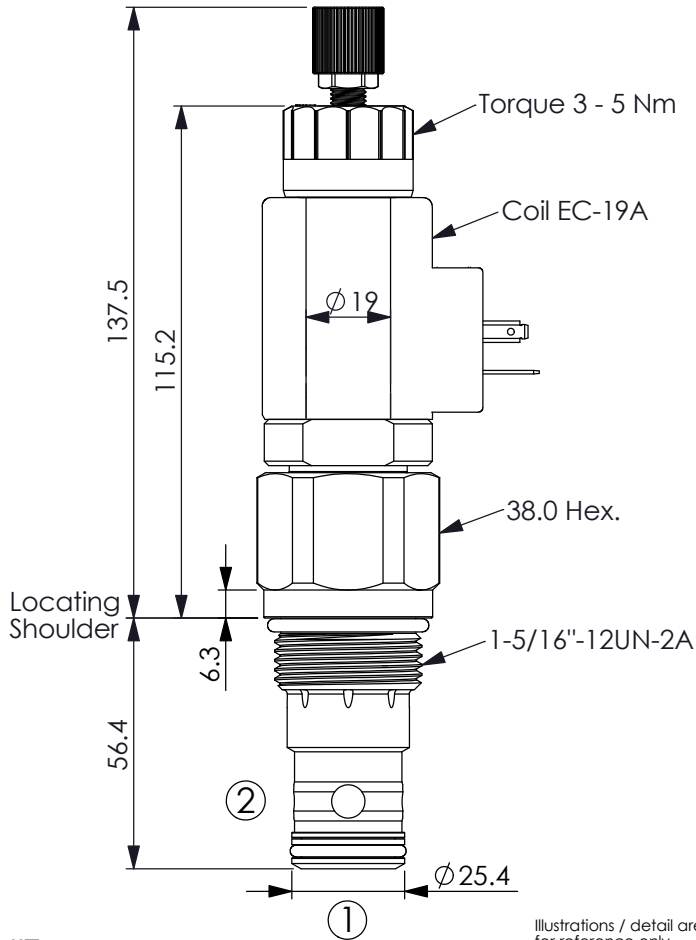


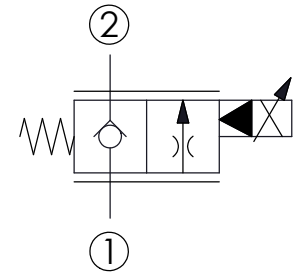
## FLOW CONTROL VALVE (Electro-Proportional, Normally Closed, Fast-acting)

Ordering Code: **PEV-16WS-2D-X-Y-Z**



UNIT:mm

Illustrations / detail are for reference only. Data subject to change.



### TECHNICAL DATA

Max. Operating pressure:	350 bar
Rated flow:	240 l/min
Cavity-Tooling:	16WS-2
Installation torque:	60 - 70 Nm
Weight (with Coil)	0.94 kg
Approximately (without Coil)	0.70 kg

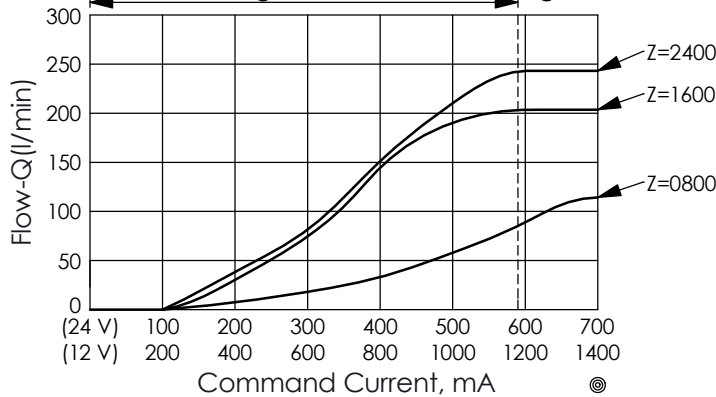
**Leakage at ΔP of 140 bar**  
Approximately 40 cc/minute maximum

Typical hysteresis less than 4% of rated current at 10 bar pressure drop - Pulse Width Modulated (PWM)

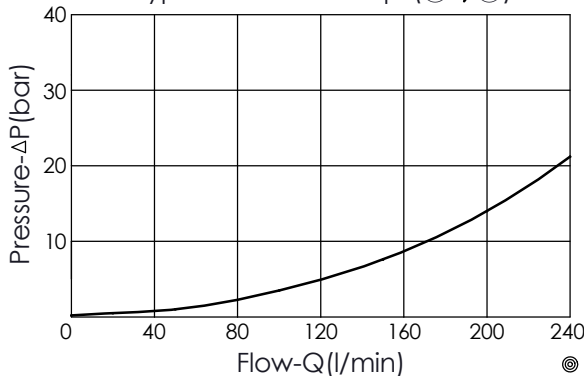
Recommended PWM frequency 60 - 150 HZ, application dependent, 140 HZ typical

Coils must be ordered separately  
2 Ports · 22 Watt. Coil Ø 19 mm tube

Typical Metering Performance (1→2) ΔP=14 bar  
Recommended range of continuous energized



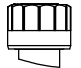
Typical Pressure Drop (2→1)

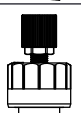


### X OPERATION

**09** Normally-Closed, No Reverse Flow Energized, Nose-in, Side-out Operation

### Y OPTIONS

**N** Non-adjustable 

**M** Manual Override (Emergency Manual Proportional Flow Adjustment) 

**P** Push Style Manual Override 

### Z FLOW

NOMINAL CAPACITY

<b>0800</b>	0 - 80 LPM
<b>1600</b>	0 - 160 LPM
<b>2400</b>	0 - 240 LPM