

Ordering Code: **PF-11A-X-Y-Z**

Turn screw clockwise to **increase** pressure setting.

Control Option: Maximum extension from locating shoulder. (Z=L Control shown)

3/8"-24UNF-2A

14.27 Hex. (9/16 inch)
Torque 9 - 10 Nm
Apply CH (5JAA097)
Plastic tamper resistant cover

ϕ19

22.22 Hex. (7/8 inch)

69.7

Tank ③

M20x1.5

Inlet ②

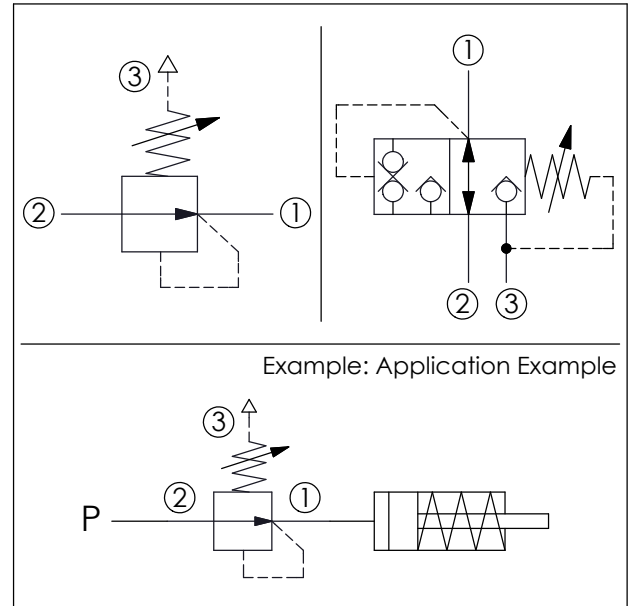
Reduced Pressure ①

35.05 (Ref.)

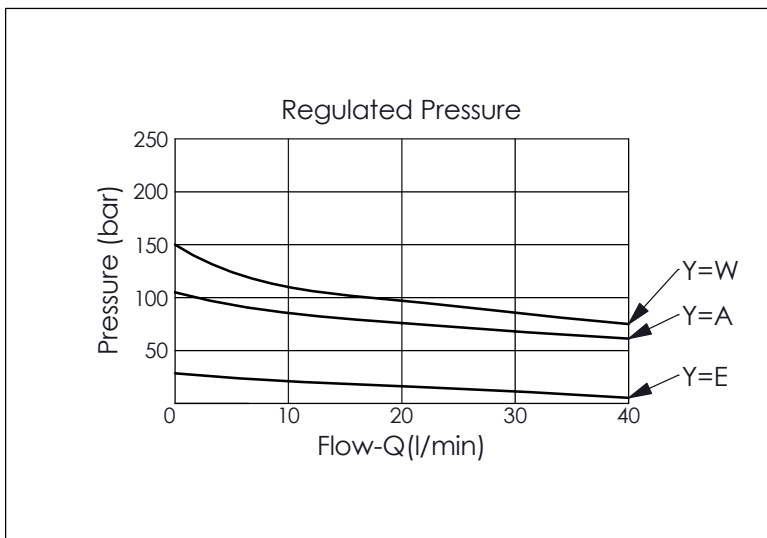
Locating Shoulder

UNIT:mm

Illustrations / detail are for reference only. Data subject to change.


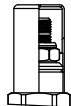


TECHNICAL DATA	
Max. Operating pressure:	350 bar
Rated flow:	30 l/min
Cavity-Tooling:	11A-3
Installation torque:	40 - 50 Nm
Weight:	0.160 (Z=L) kg
Poppet type construction, dirt tolerance All spring ranges allow 350 bar inlet pressure.	



X	OPERATION
3J	Reducing Valve (Without Relief function)
<ul style="list-style-type: none"> Port ② and Port ① to Port ③ without internal leakage. Pressure reducing for a long time, unnecessary provide oil by pump. Please pay attention when using this valve in a dead-head application (no flow from port ① to port ②) because it is without relieving function. The pressure may continue increase obviously because of the very low leakage at the reduced pressure side of the circuit. The pressure at port ① will not stop at the pressure setting of the spring, it will gradually increase toward port ② according to the flow. This valve is almost zero leakage. To prevent pressure change of port ①, we suggest increasing port ① capacity of cavity. If you have any question, please contact Winner's sales department. If the relief function is needed, please refer to PG-11A-30-\square-\square. 	

Y	SPRINGS
ADJUSTMENT RANGES	
A	20 - 210 bar (50 bar Standard Setting)
E	1.7 - 28 bar (14 bar Standard Setting)
W	35 - 315 bar (70 bar Standard Setting)

Z	OPTIONS
L	Leakproof hex. socket screw. 
C	Stainless Steel Tamper Resistant Cover. 
K	Handknob with Lock Knob. (Order Code: 6ZAK001) 