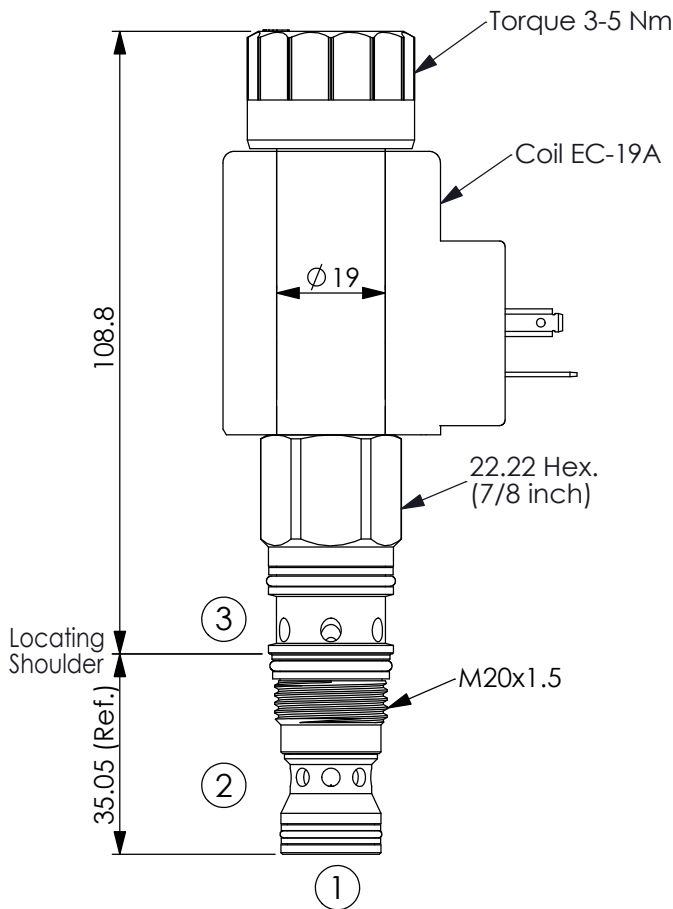


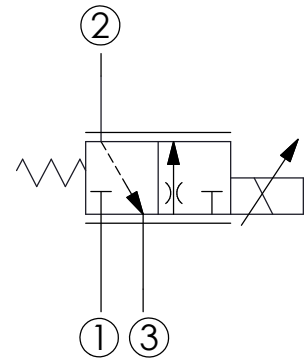
FLOW CONTROL VALVE

(Electro-Proportional, 3-way Flow Control Meter In Throttle)

Ordering Code: **PFA-11A-X-Y-Z**



UNIT:mm

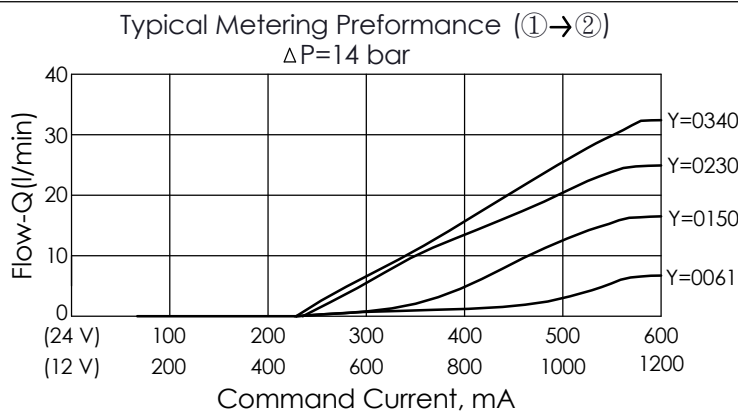


TECHNICAL DATA

Max. Operating pressure:	350	bar
Rated flow:	34	l/min
Cavity-Tooling:	11A-3	
Installation torque:	40-50	Nm
Linearity (with dither)	<2%	
Repeatability (with dither)	<2%	
Hysteresis (with dither)	<4%	
Hysteresis with DC input	<8%	
Deadband, nominal (as a percentage of input)	30%	

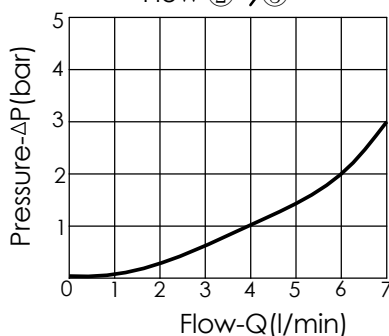
The transition between positions is closed.

Weight:(with Coil)	0.57	kg
(without Coil)	0.29	kg



If you need more information
Please contact our sales department

Note: Flow in the ②to③ direction is limited to about 5 LPM
Flow ②→③



X	OPERATION	
3D	3 Ports · 22 Watt. Coil	
	$\phi 19$ mm tube	

Y	FLOW	
	NOMINAL CAPACITY	
0061	0.4~6.1 LPM	
0150	0.4~15 LPM	
0230	0.4~23 LPM	
0340	0.4~34 LPM	

Z	OPTIONS	
N	Non-adjustable	
P	Push Style Manual Override	