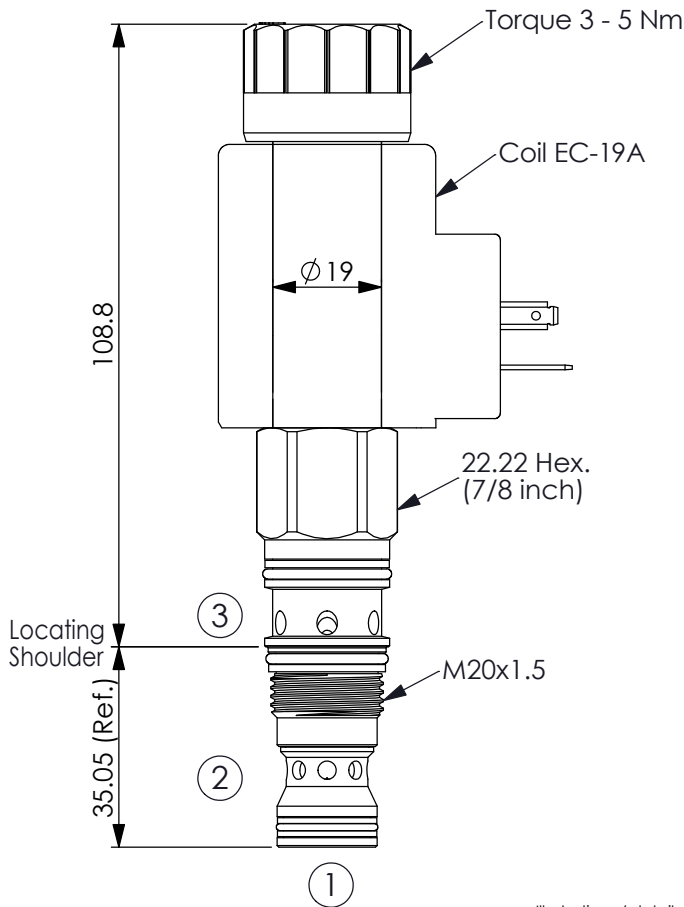
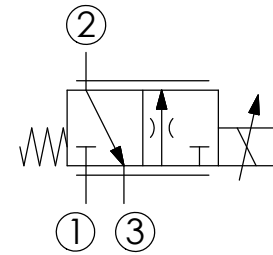


Ordering Code: **PFB-11A-X-Y-Z**



UNIT:mm

Illustrations / detail are for reference only. Data subject to change.

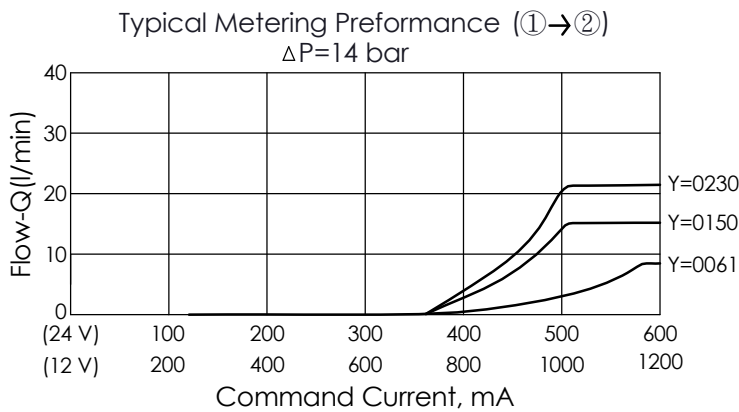


### TECHNICAL DATA

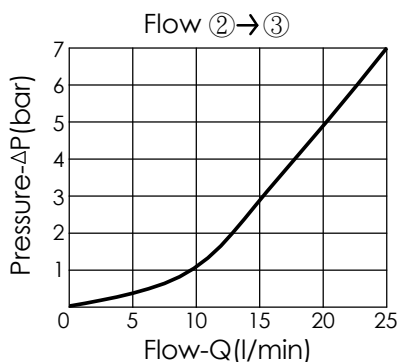
Max. Operating pressure:	350	bar
Rated flow:	23	l/min
Cavity-Tooling:	11A-3	
Installation torque:	40 - 50	Nm
Linearity (with dither)	<2%	
Repeatability (with dither)	<2%	
Hysteresis (with dither)	<4%	
Hysteresis with DC input	<8%	
Deadband, nominal (as a percentage of input)	60%	

The transition between positions is closed.

Weight:(with Coil)	0.57	kg
(without Coil)	0.29	kg



If you need more information  
Please contact our sales department



<b>X</b>	<b>OPERATION</b>	
<b>3D</b>	3 Ports - 22 Watt. Coil ∅ 19 mm tube	

<b>Y</b>	<b>FLOW</b>	
	NOMINAL CAPACITY	
<b>0061</b>	0.4 - 6.1 LPM	
<b>0150</b>	0.4 - 15 LPM	
<b>0230</b>	0.4 - 23 LPM	

<b>Z</b>	<b>OPTIONS</b>	
<b>N</b>	Non-adjustable	
<b>P</b>	Push Style Manual Override	