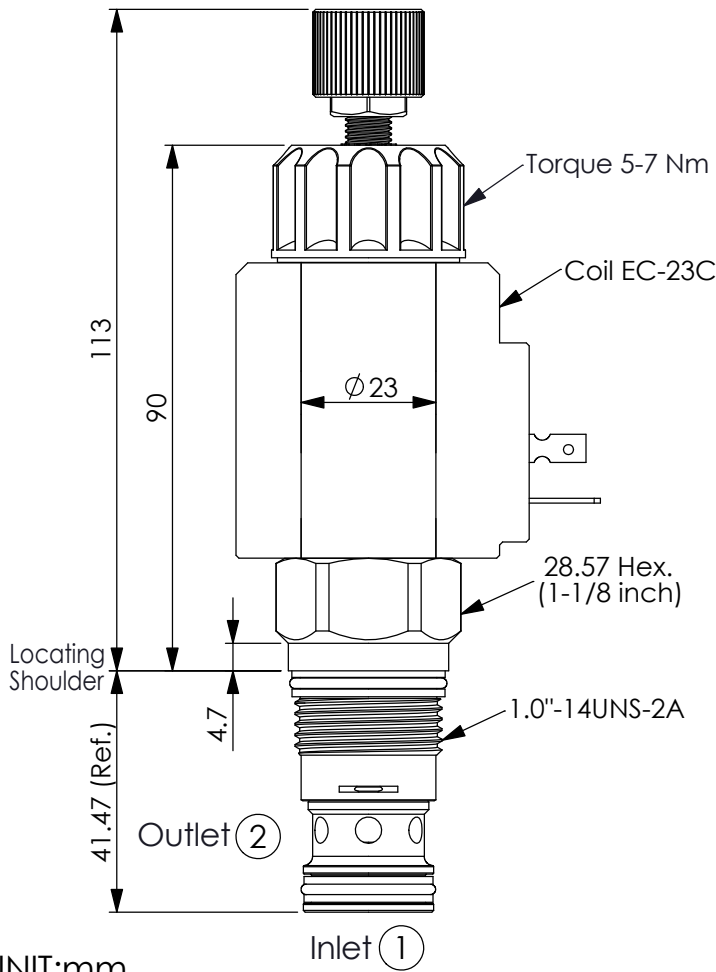
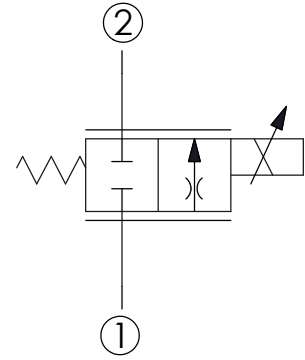


FLOW CONTROL VALVE (Electro-Proportional Flow Control Valve, Normally Closed Throttle)

Ordering Code: **PFC-5A-X-Y-Z**

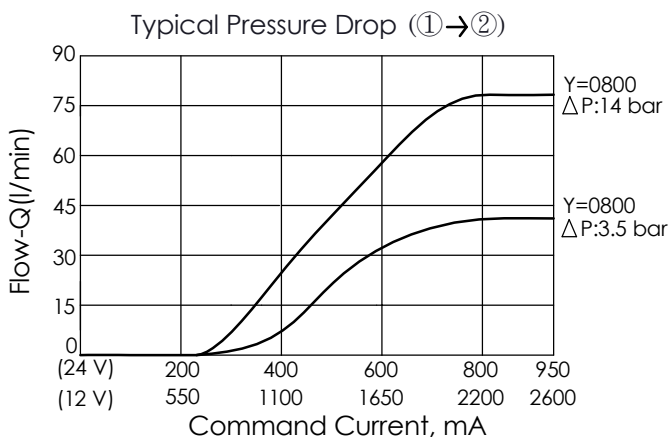
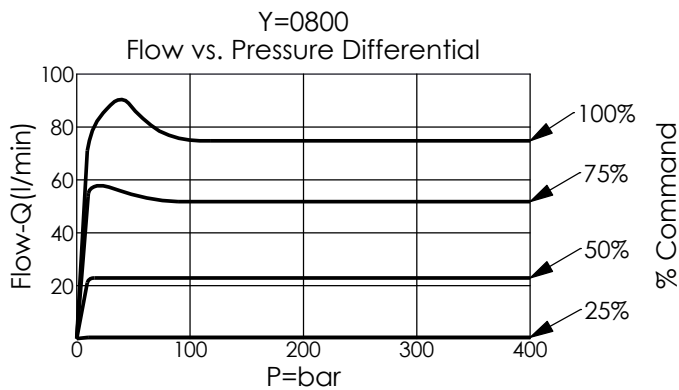


UNIT:mm



TECHNICAL DATA

Max.Operating pressure:	350	bar
Rated flow:	80	l/min
Cavity-Tooling:	5A-2	
Installation torque:	60 - 70	Nm
Linearity (with dither)	<2%	
Repeatability (with dither)	<2%	
Hysteresis (with dither)	<4%	
Hysteresis with DC input	<8%	
Deadband, nominal (as a percentage of input)	25%	
Weight:(with Coil)	0.71	kg
(without Coil)	0.36	kg



X	OPERATION	
2G	2 Ports · 17 Watt. Coil	
	Ø 23 mm tube	

Y	FLOW	
	NOMINAL CAPACITY	
0800	80 LPM	

Z	OPTIONS	
N	Non-adjustable	
M	Manual Override	
P	Push Style Manual Override	