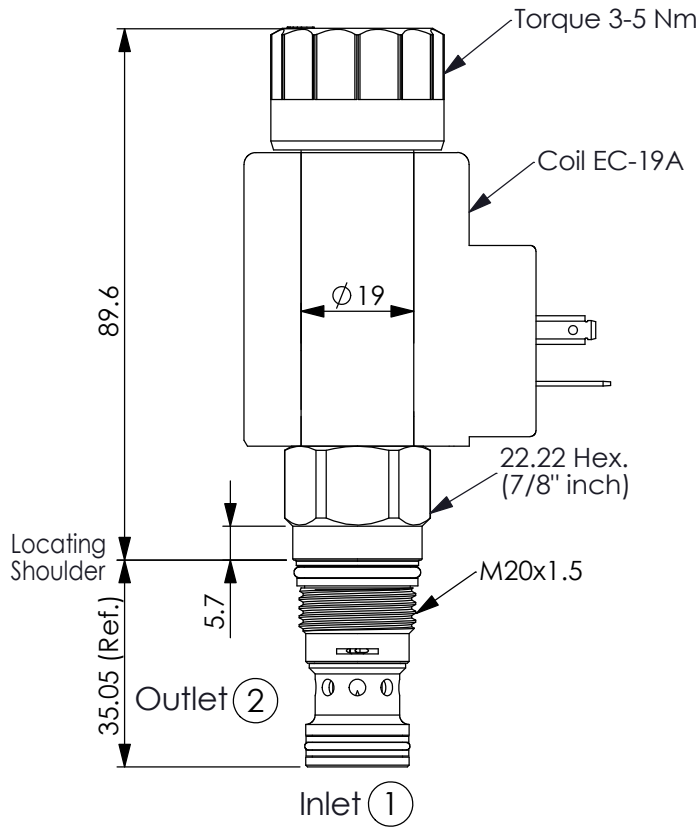


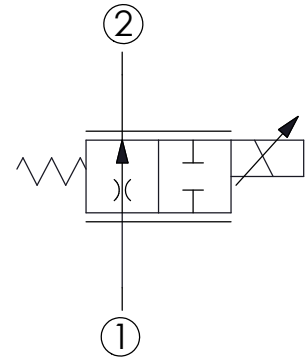
## FLOW CONTROL VALVE

(Electro-Proportional Flow Control Valve, Normally Open Throttle)

Ordering Code: **PFH-13A-X-Y-Z**

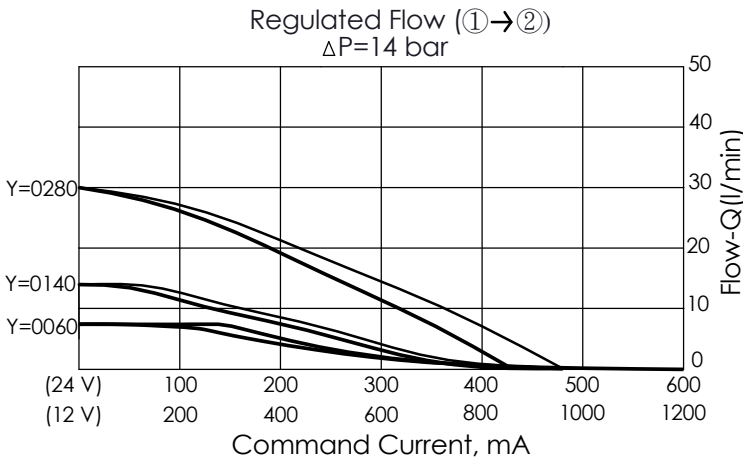


UNIT:mm



### TECHNICAL DATA

Max. Operating pressure:	350	bar
Rated flow:	28	l/min
Cavity-Tooling:	13A-2	
Installation torque:	40-50	Nm
Linearity (with dither)	<2%	
Repeatability (with dither)	<2%	
Hysteresis (with dither)	<4%	
Hysteresis with DC input	<8%	
Deadband, nominal (as a percentage of input)	25%	
Weight:(with Coil)	0.53	kg
(without Coil)	0.30	kg



If you need more information  
Please contact our sales department

Y	FLOW	
	NOMINAL CAPACITY	
0060	0.4~6 LPM	
0140	0.6~14 LPM	
0280	0.8~28 LPM (Standard)	

X	OPERATION	
2D	2 Ports · 22 Watt. Coil	
	$\phi 19$ mm tube	

Z	OPTIONS	
N	Non-adjustable	
P	Push Style Manual Override	