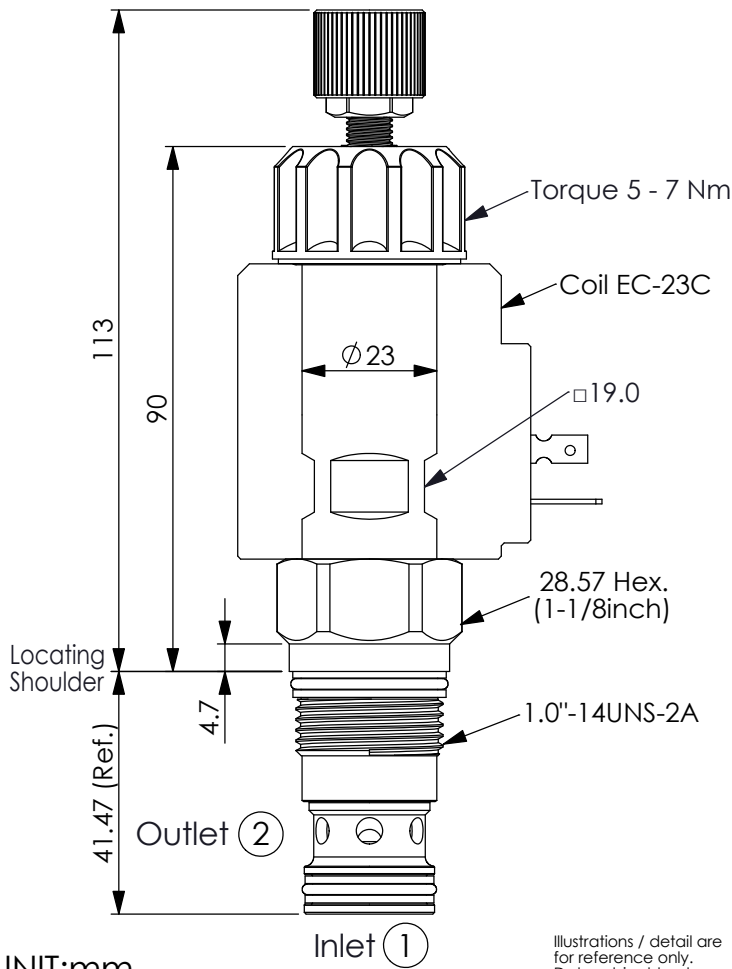


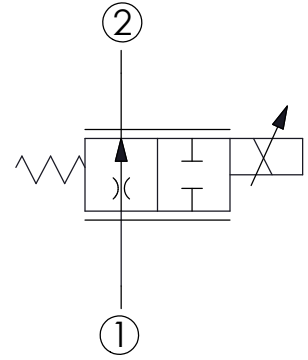
FLOW CONTROL VALVE (Electro-Proportional Flow Control Valve, Normally Open Throttle)

Ordering Code: **PFH-5A-X-Y-Z**



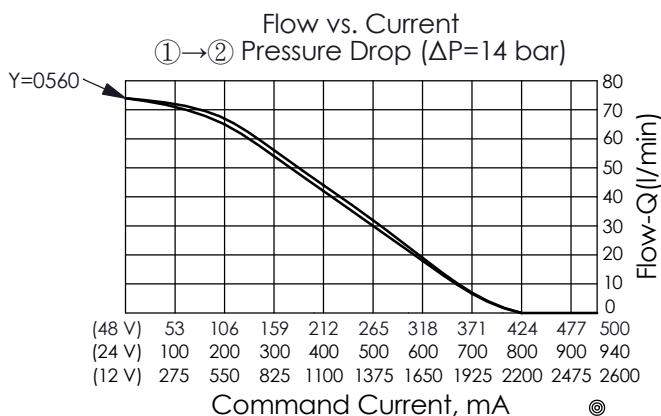
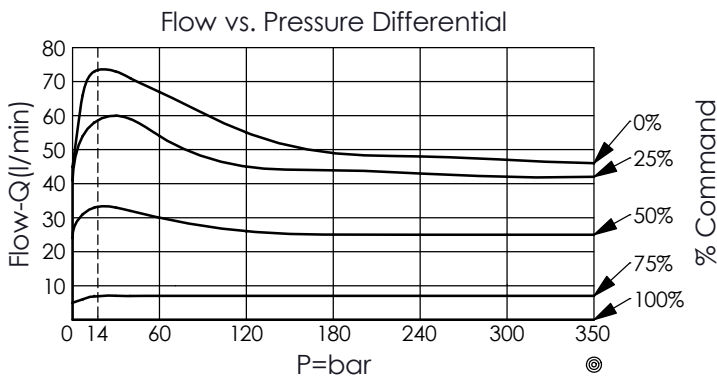
UNIT:mm

Illustrations / detail are for reference only. Data subject to change.



TECHNICAL DATA

Max. Operating pressure:	350	bar
Rated flow:	56	l/min
Cavity-Tooling:	5A-2	
Installation torque:	60 - 70	Nm
Linearity (with dither)	<2%	
Repeatability (with dither)	<2%	
Hysteresis (with dither)	<4%	
Hysteresis with DC input	<8%	
Deadband, nominal (as a percentage of input)	25%	
Weight:(with Coil)	0.742 (Z=N)	kg
(without Coil)	0.392 (Z=N)	kg



X OPERATION

2G 2 Ports · 17 Watt. Coil
 $\varnothing 23$ mm tube

Y FLOW

NOMINAL CAPACITY

0560 56 LPM

Z OPTIONS

N	Non-adjustable	
M	Manual Override (Standard)	
P	Push Style Manual Override	