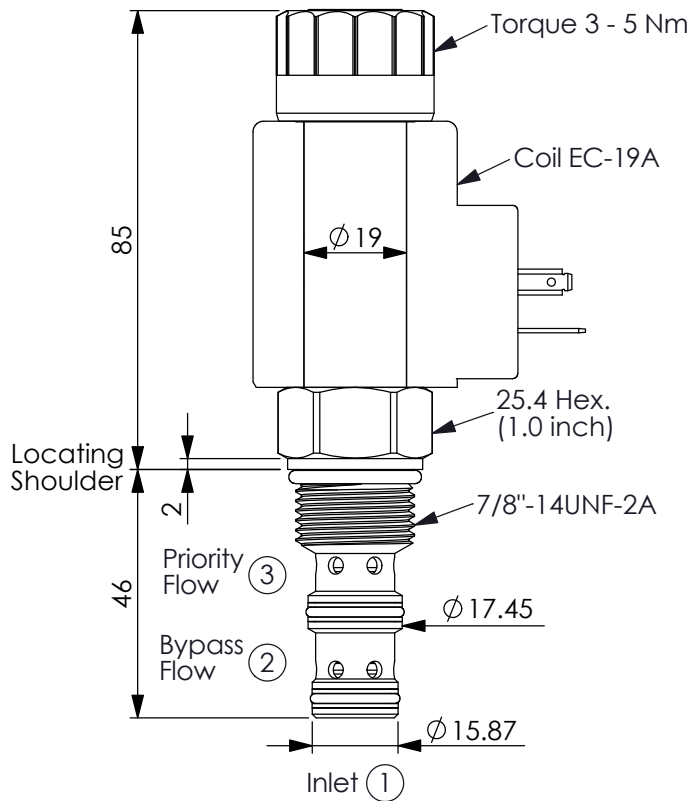


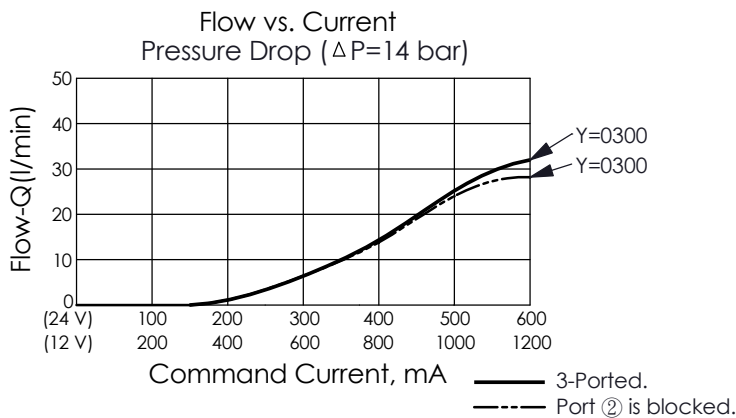
FLOW CONTROL VALVE

(Normally Closed, Electro-Proportional, Pressure compensated)

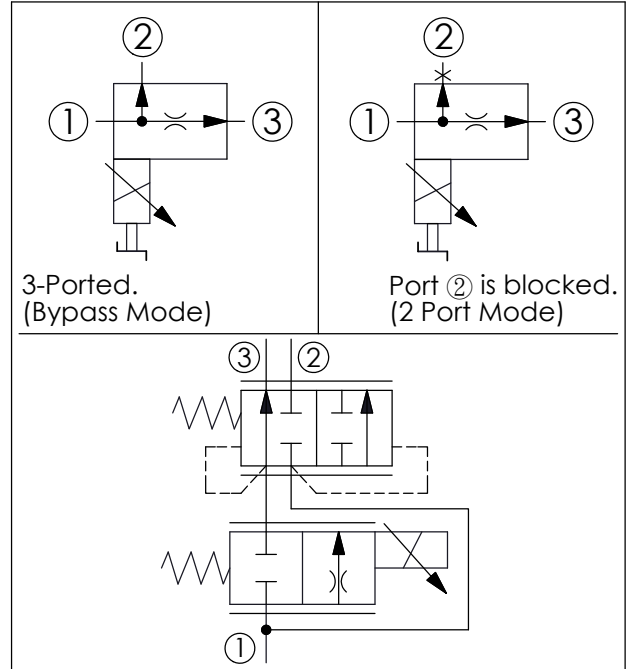
Ordering Code: **PFR-10W-X-Y-Z**



UNIT:mm



Y	PRIORITY FLOW (PORT ③)
0300	0 - 30 LPM
· If you need other flow options, please contact WINNER's sales department.	



TECHNICAL DATA

Max. Operating pressure: 240 bar

Rated inlet flow: 50 l/min

Priority flow: 30 l/min

Cavity-Tooling: 10W-3

Installation torque: 44 - 56 Nm

Linearity (with dither) <2%

Repeatability (with dither) <2%

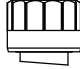
Hysteresis (with dither) <4%

Hysteresis with DC input <8%

Weight: (with Coil) 0.500 kg
(without Coil) 0.260 kg

· If you need higher max. operating pressure, please contact WINNER's sales department.

X	OPERATION
3D	3 Ports - 22 Watt. Coil $\phi 19$ mm tube
NOTE: Coil must be ordered separately. Use 12V DC or 24V DC (Series EC-19A) coils only.	

Z	OPTIONS
N	Non-adjustable 
P	Push Style Manual Override 