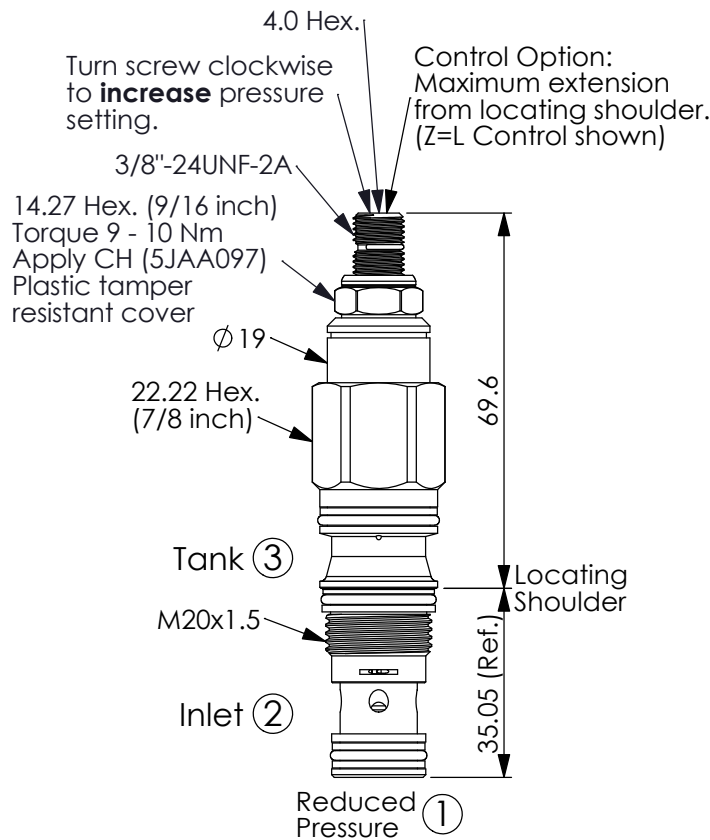


## REDUCING VALVE WITH THERMAL RELIEF (Direct-Acting, Poppet Type)

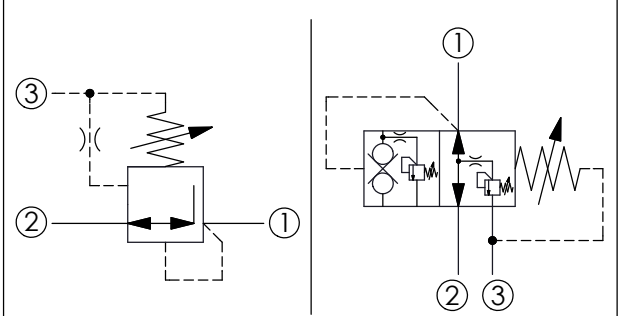
Ordering Code: **PG-11A-X-Y-Z**

**PATENT PENDING**

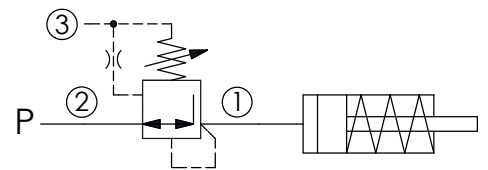


UNIT:mm

Illustrations / detail are for reference only. Data subject to change.



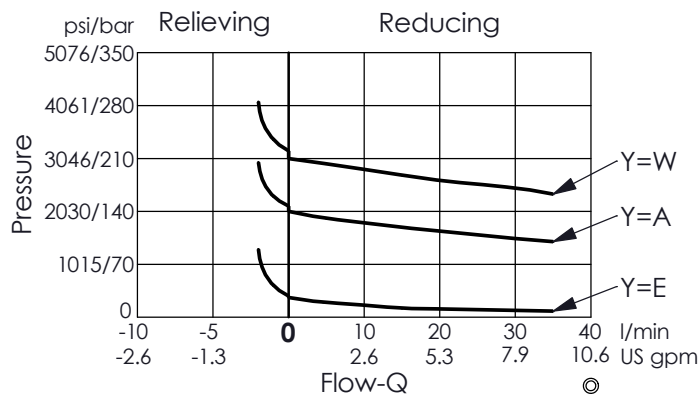
Example: Application Example



### TECHNICAL DATA

Max.Operating pressure:	350	bar
Rated flow:	30	l/min (Refer To Performance Chart)
Cavity-Tooling:	11A-3	
Installation torque:	40 - 50	Nm
Weight:	0.181 (Z=L)	kg

- Poppet type construction, dirt tolerance.
- All spring ranges allow 350 bar inlet pressure.



### X OPERATION

**30** Reducing Valve  
(With Relief function)

- This poppet type reducing valve with relieving function. Due to essentially zero leak structure, that can be applied to load holding, clamping gripping, or thermal-relief functions. To maintain the reduced pressure stable for a long time.
- If without the relief function is needed, please refer to PF-11A-3J-[Y]-[Z].

**Y**

### SPRINGS

#### ADJUSTMENT RANGES

<b>A</b>	20 - 210 bar ( 50 bar Standard Setting)
<b>E</b>	1.7 - 28 bar ( 14 bar Standard Setting)
<b>W</b>	35 - 315 bar ( 70 bar Standard Setting)

**Z**

### OPTIONS

<b>L</b>	Leakproof hex. socket screw.	
<b>C</b>	Stainless Steel Tamper Resistant Cover.	
<b>K</b>	Handknob with Lock Knob. (Order Code: 6ZAK001)	