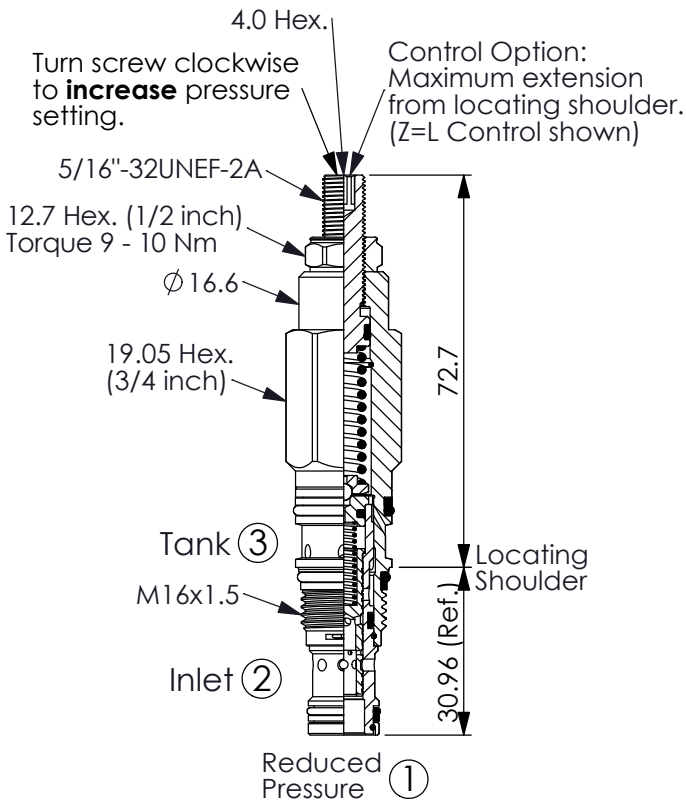


Ordering Code: **PP-163A-X-Y-Z**



Turn screw clockwise to **increase** pressure setting.

Control Option: Maximum extension from locating shoulder. (Z=L Control shown)

5/16"-32UNEF-2A

12.7 Hex. (1/2 inch)
Torque 9 - 10 Nm

Ø 16.6

19.05 Hex. (3/4 inch)

72.7

30.96 (Ref.)

Locating Shoulder

Tank ③

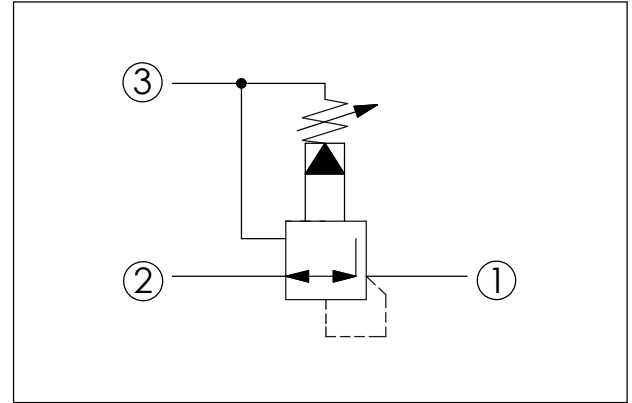
M16x1.5

Inlet ②

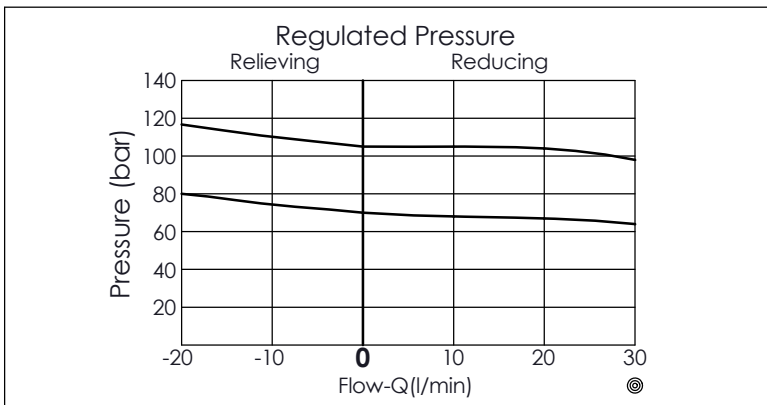
Reduced Pressure ①

UNIT:mm

Illustrations / detail are for reference only. Data subject to change.




TECHNICAL DATA	
Max. operating pressure:	350 bar
Rated flow:	20 l/min
Cavity-Tooling:	163A-3
Installation torque:	27 - 33 Nm
Weight:	0.125 (Z=L) kg
· Control Pilot Flow (0.11 - 0.16 L/min.)	



X	OPERATION	
30	Standard type	
	Low leakage	

Y	SPRINGS	
	ADJUSTMENT RANGES	
A	5 - 210 bar (14 bar Standard Setting)	Maximum Differential=210 bar
B	5 - 105 bar (14 bar Standard Setting)	Maximum Differential=210 bar
N	5 - 55 bar (14 bar Standard Setting)	Maximum Differential=140 bar
Q	5 - 28 bar (14 bar Standard Setting)	Maximum Differential=140 bar
W	7 - 315 bar (14 bar Standard Setting)	Maximum Differential=350 bar

Z	OPTIONS	
L	Leakproof hex. socket screw.	
K	Handknob with Lock Knob. (Order Code: 7ZAK001)	