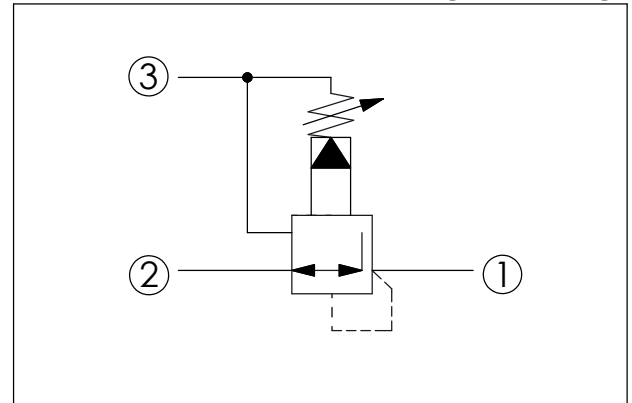
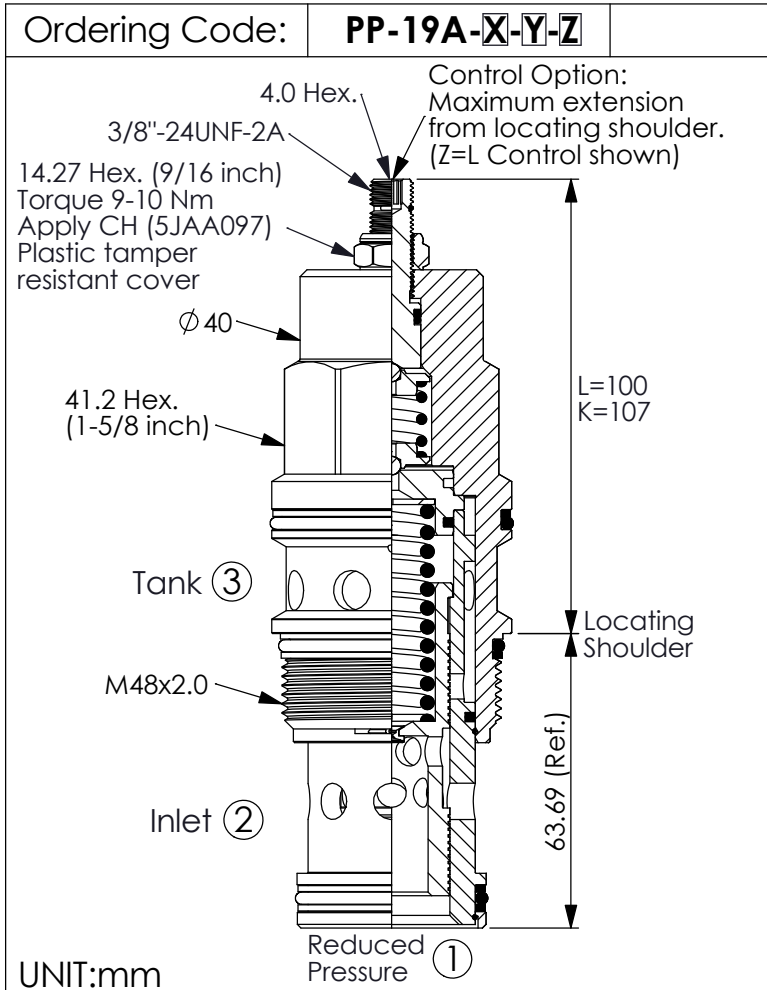


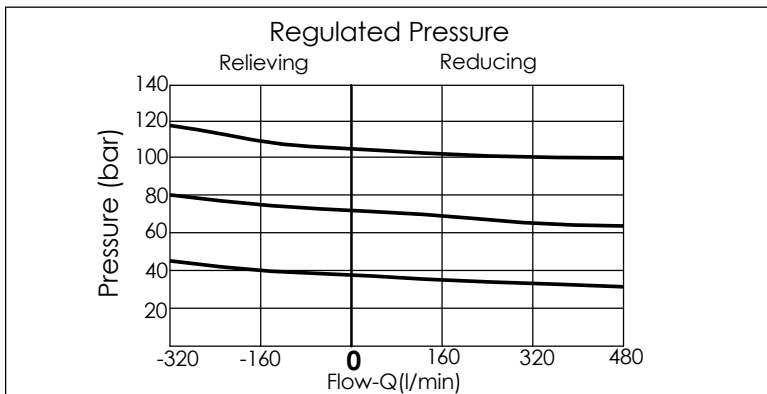
REDUCING/RELIEVING VALVE (Pilot Operated Reducing/Relieving)



TECHNICAL DATA

Max. Operating pressure:	350	bar
Rated flow:	320	l/min
Cavity-Tooling:	19A-3 (19AB-3)	
Installation torque:	465-500	Nm
Weight:	1.27 (Z=L)	kg
· Control Pilot Flow (0.25-0.33 L/min.)		

X	OPERATION	
30	Standard type Low leakage	
*33	Very good pressure control Improved dynamic response	
35	Impact resistant type Low leakage without filter	



Y	SPRINGS	
ADJUSTMENT RANGES (X=30)(X=35)		
A	7-210 bar (14 bar Standard Setting)	Maximum Differential=210 bar
B	3.5-105 bar (14 bar Standard Setting)	Maximum Differential=210 bar
D	1.7-55 bar (14 bar Standard Setting)	Maximum Differential=140 bar
E	1.7-28 bar (14 bar Standard Setting)	Maximum Differential=140 bar
H	2-210 bar (14 bar Standard Setting)	Maximum Differential=210 bar
N	4-55 bar (14 bar Standard Setting)	Maximum Differential=140 bar
Q	4-28 bar (14 bar Standard Setting)	Maximum Differential=140 bar
W	10.5-315 bar (14 bar Standard Setting)	

* When X = 33, the lowest pressure will be a bit higher than standard.
· Any technical questions, please feel free to consult with our sales dept.

Z	OPTIONS	
L	Leakproof hex. socket screw.	
K	Handknob with Lock Knob. (Order Code: 6ZAK001)	