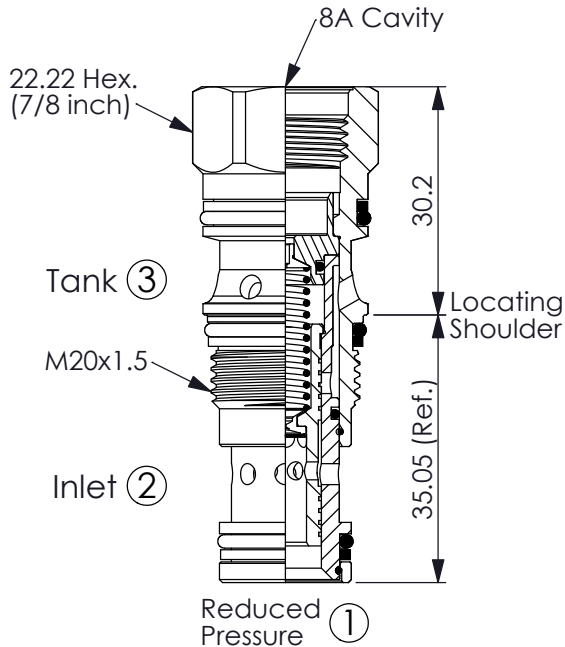
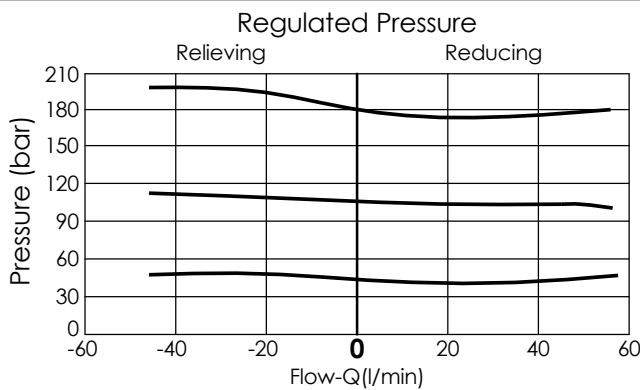


REDUCING/RELIEVING VALVE (Pilot operated, pressure reducing/relieving main stage with integral 8A control cavity)

Ordering Code: **PP-11A-X-Y-8**

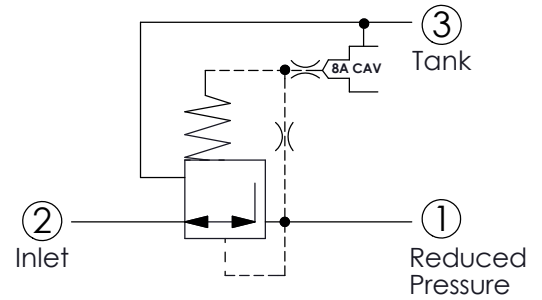


UNIT:mm



Y	SPRINGS	
	MINIMUM CONTROL PRESSURE	
D	1.7 bar (25 psi)	
W	7 bar (100 psi)	

• If the inlet pressure under 140 bar, please select Y=D bias spring or Y=W bias spring.
 • If the inlet pressure between 140 bar to 350 bar, please select Y=W bias spring.
 • If you need more stable pressure, we recommended Y=W bias spring.



TECHNICAL DATA

Max. Operating pressure:	350	bar
Rated flow:	40	l/min
Cavity-Tooling:	11A-3	
Installation torque:	40-50	Nm
Weight:	0.10	kg

- Control Pilot Flow (0.11-0.16 L/min.)
- If you have special pressure requirement, please feel free to contact with our sales department.

X OPERATION

30	Standard Type Low Leakage	
33	Option Type Improved Dynamic Response (Recommended order number: PCB-2600C Proportional Amplifier)	
35	Impact resistant type Low leakage without filter	

• Any technical questions, please feel free to consult with our sales dept.

- This valve can apply in pilot control valve of various 8A2 cavities. For example: With Winner's Pilot Control Valve PRA-8A-2D, PRB-8A-2D (If you apply such as PP-...-8, PV, PW-...-8...etc., the function of Proportional Reducing/Relieving Valve, we recommend to select the PCB-2600C Amplifier, which will get more stable pressure control), that will be a high performance Proportional Reducing/Relieving valve, the maximum pressure can reach 350 bar.