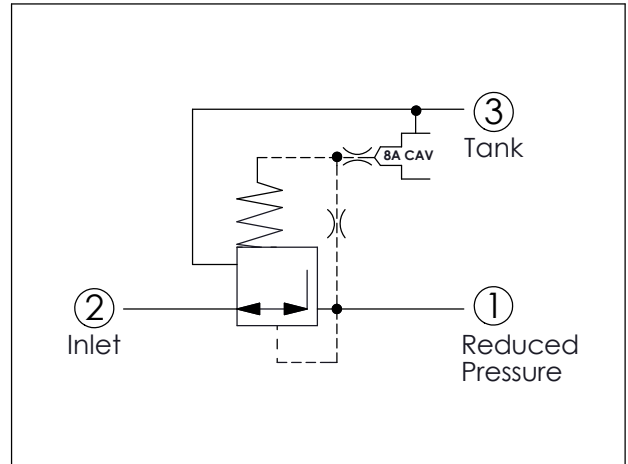


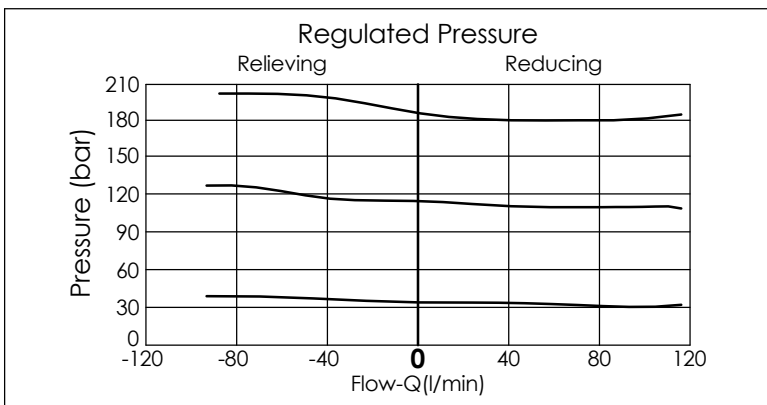
REDUCING/RELIEVING VALVE (Pilot operated, pressure reducing/relieving main stage with integral 8A control cavity)

Ordering Code: **PP-2A-X-Y-8**

UNIT:mm



TECHNICAL DATA		
Max.Operating pressure:	350	bar
Rated flow:	80	l/min
Cavity-Tooling:	2A-3	
Installation torque:	60-70	Nm
Weight:	0.19	kg
<ul style="list-style-type: none"> Control Pilot Flow (0.16-0.25 L/min.) If you have special pressure requirement, please feel free to contact with our sales department. 		



X	OPERATION	
30	Standard Type	Low Leakage
33	Option Type	Improved Dynamic Response (Recommended order number: PCB-2600C Proportional Amplifier)
<ul style="list-style-type: none"> Any technical questions, please feel free to consult with our sales dept. 		

Y	SPRINGS	
	MINIMUM CONTROL PRESSURE	
D	1.7 bar (25 psi)	
W	7 bar (100 psi)	
<ul style="list-style-type: none"> If the inlet pressure under 140 bar, please select Y=D bias spring or Y=W bias spring. If the inlet pressure between 140 bar to 350 bar, please select Y=W bias spring. If you need more stable pressure, we recommended Y=W bias spring. 		

This valve can apply in pilot control valve of various 8A2 cavities. For example: With Winner's Pilot Control Valve PRA-8A-2D, PRB-8A-2D (If you apply such as PP...8, PV, PW...8...etc., the function of Proportional Reducing/Relieving Valve, we recommend to select the PCB-2600C Amplifier, which will get more stable pressure control), that will be a high performance Proportional Reducing/Relieving valve, the maximum pressure can reach 350 bar.