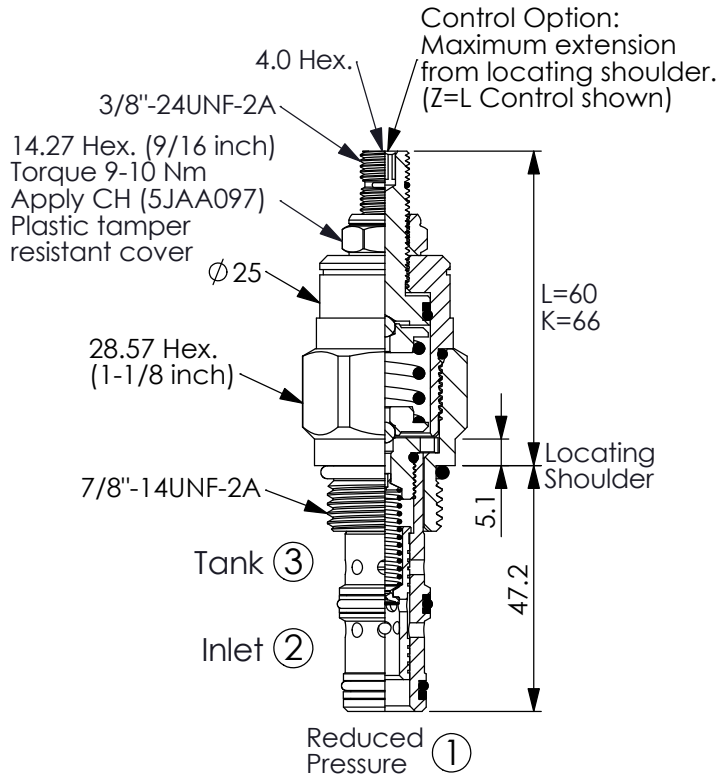
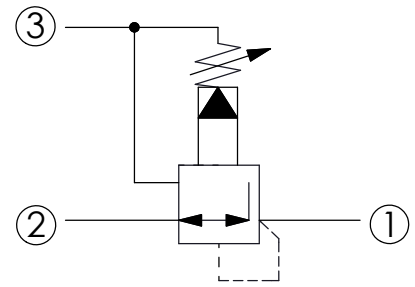
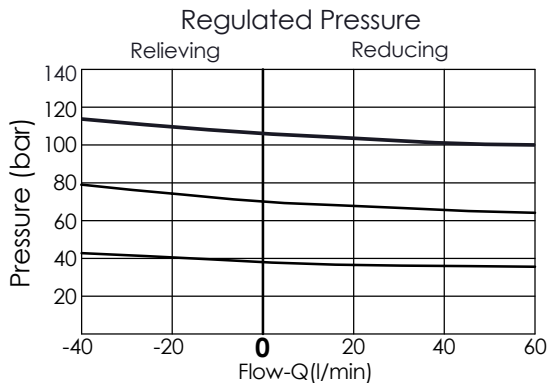


Ordering Code: **PP-10W-X-Y-Z**



UNIT:mm




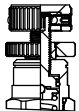
TECHNICAL DATA

Max. operating pressure:	350	bar
Rated flow:	40	l/min
Cavity-Tooling:	10W-3	
Installation torque:	35-45	Nm
Weight:	0.23 (Z=L)	kg
· Control Pilot Flow (0.11-0.16 L/min.)		

X OPERATION

30	Standard type Low leakage
33	Very good pressure control Improved dynamic response
35	Impact resistant type Low leakage without filter

Z OPTIONS

L	Leakproof hex. socket screw.	
K	Handknob with Lock Knob. (Order Code: 6ZAK001)	

Y SPRINGS	
ADJUSTMENT RANGES (X=30) (X=35)	
A	7-210 bar (14 bar Standard Setting) Maximum Differential=210 bar
B	3.5-105 bar (14 bar Standard Setting) Maximum Differential=210 bar
D	1.7-55 bar (14 bar Standard Setting) Maximum Differential=140 bar
E	1.7-28 bar (14 bar Standard Setting) Maximum Differential=140 bar
N	4-55 bar (14 bar Standard Setting) Maximum Differential=140 bar
Q	4-28 bar (14 bar Standard Setting) Maximum Differential=140 bar
W	10.5-315 bar (14 bar Standard Setting)

- When X = 33, the lowest pressure will be a bit higher than standard.
- Any technical questions, please feel free to consult with our sales dept.