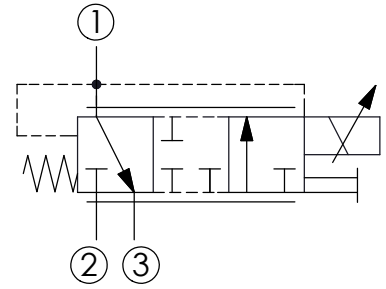
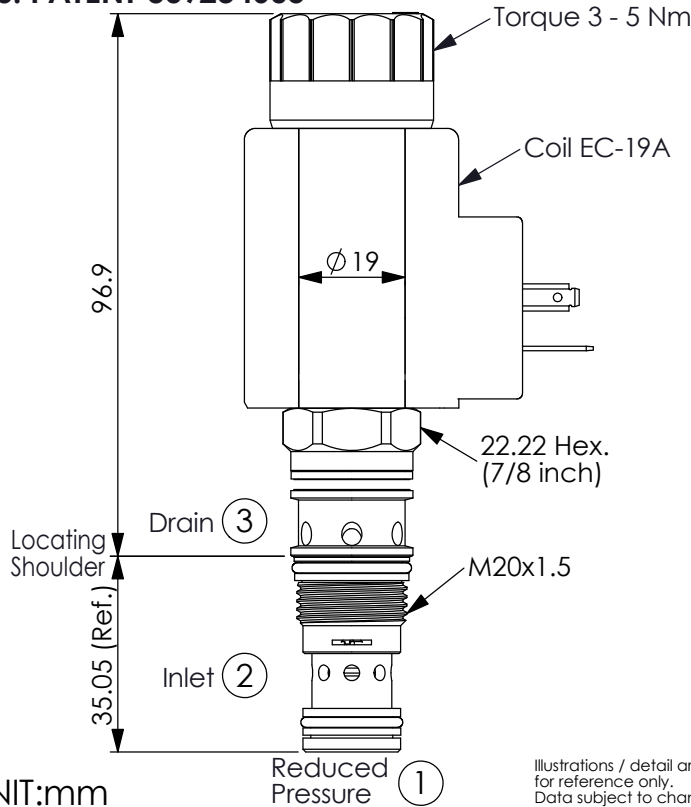


Ordering Code: **PPD-11A-X-Y-Z-74-1**

U.S. PATENT US9234605



TECHNICAL DATA

Max. Operating pressure: 350 bar

Rated flow: 20 l/min

Cavity-Tooling: 11A-3

Installation torque: 40 - 50 Nm

Linearity (with dither) <2%

Repeatability (with dither) <2%

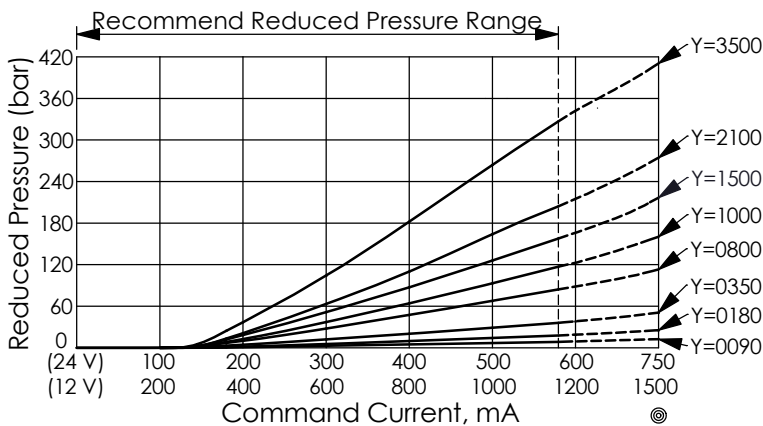
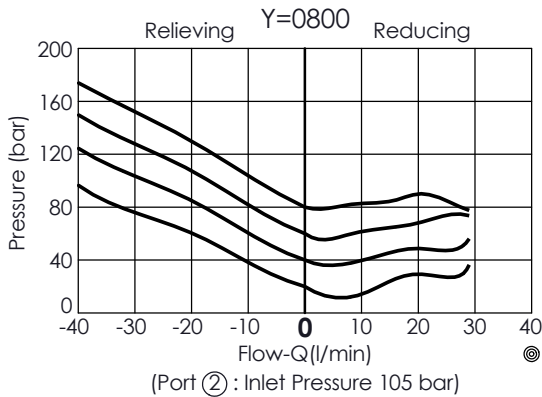
Hysteresis (with dither) <4%

Hysteresis with DC input <8%

Maximum valve leakage approximately= 20 cc/min. Leakage specified is out of port ③ with a supply pressure of 210 bar and the valve set at mid-range.

Weight:(with Coil) 0.49 kg
(without Coil) 0.25 kg

Hydraulic Fluid Viscosity · Cleanliness · Temperature Level: Please refer WINNER technical information.
(T.101.101.E HYDRAULIC FLUID (A) VISCOSITY)
(T.101.102.E HYDRAULIC FLUID (B) CLEANLINESS)
(T.101.103.E HYDRAULIC FLUID (C) TEMPERATURE)

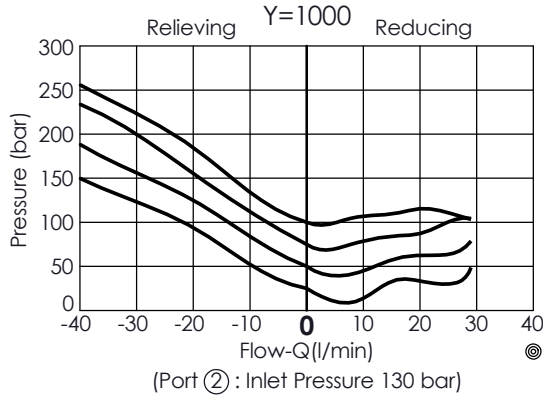


Y	OPERATING RANGE	
	Rated Pressure	
0090	1 - 9 bar	
0180	1 - 18 bar	
0350	1 - 35 bar	
0800	2 - 80 bar	
1000	10 - 100 bar	
1500	10 - 150 bar	
2100	20 - 210 bar	
3500	35 - 350 bar	

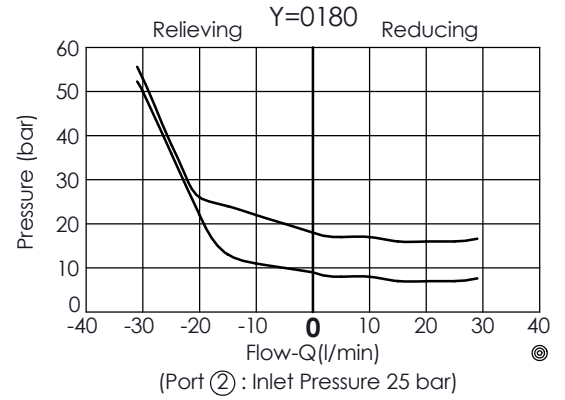
- When inlet pressure up to 210 - 350 bar, Recommend : Keep "Reduced Pressure" (Port ①) minimum 30 bar to have best control.
- Basically, this valve can be used under 1 bar but please kindly be noted that the back pressure of port ③ will add to the valve setting at 1:1 ratio.
- If your operation need to control under 10 bar, please contact WINNER's sales department.
Example: Y=1000 · Y=1500 · Y=2100 · Y=3500

X	OPERATION
3D	3 Ports · 22 Watt. Coil Ø 19 mm tube

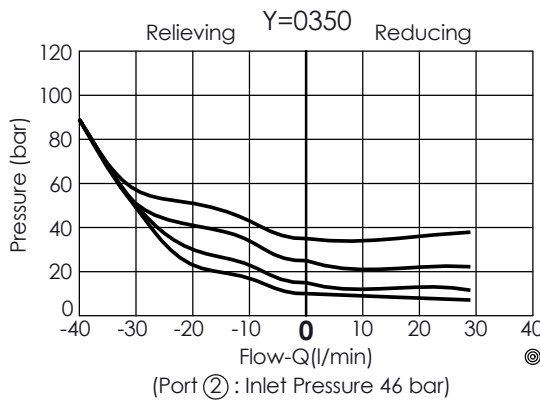
Z	OPTIONS
N	Non-adjustable
P	Push Style Manual Override



(PPD-11A-3D-1000- \square -74-1)



(PPD-11A-3D-0180- \square -74-1)



(PPD-11A-3D-0350- \square -74-1)