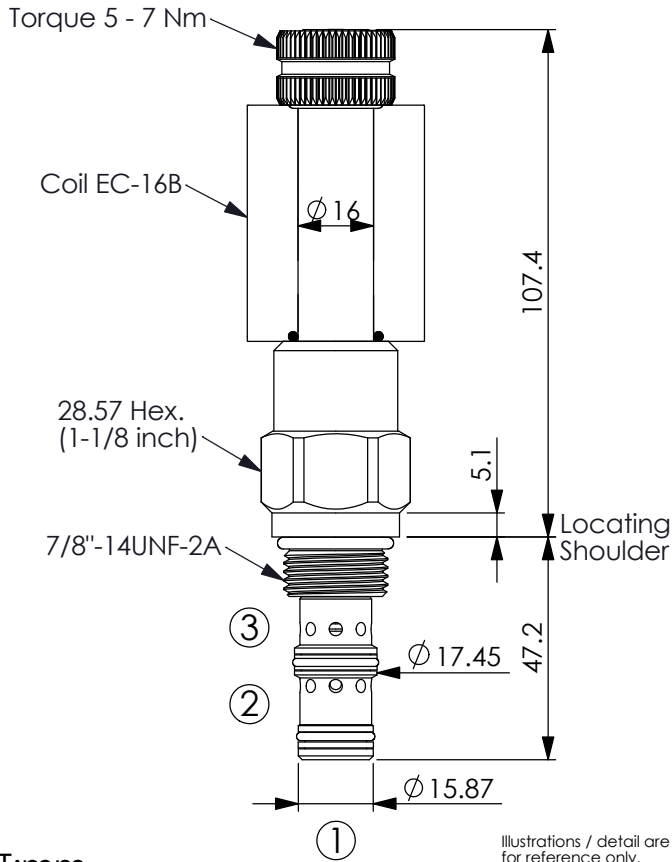
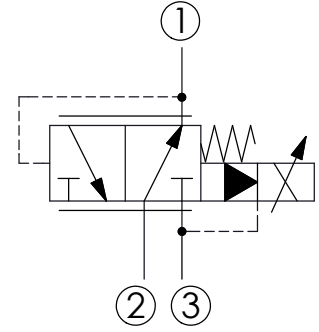


Ordering Code: **PPP-10W-X-Y-Z-B**



UNIT:mm

Illustrations / detail are for reference only. Data subject to change.



TECHNICAL DATA

Max.Operating pressure: 350 bar

Rated flow: 40 l/min

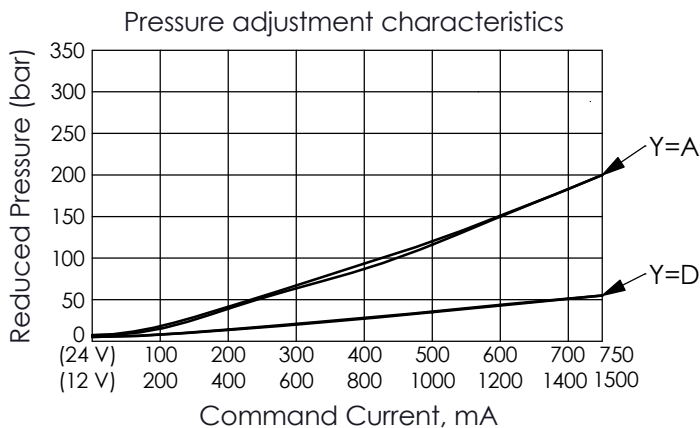
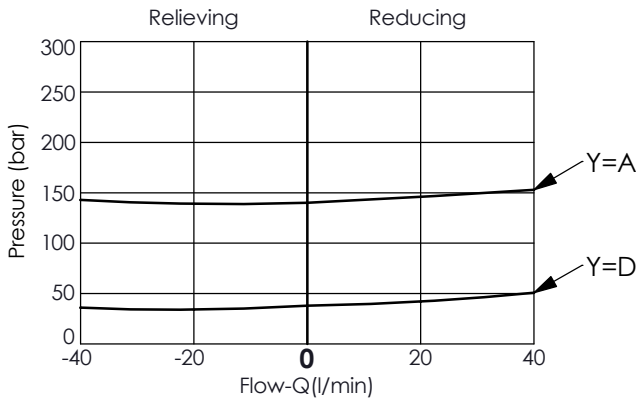
Cavity-Tooling: 10W-3

Installation torque: 35 - 45 Nm

Weight: 0.324 kg (Without Coil)

Coils must be ordered separately

- Maximum Leakage Approximately (10 cc/min./70 bar)
- Hysteresis with DC input < 8%
- Hysteresis with dither < 4%
- Linearity with dither < 2%
- Dither should be adjustable between 80-300 Hz (Recommended dither frequency 85 Hz)
- Reseat exceeds 85% of cracking pressure.



X	OPERATION	
3C	3 Ports · 26 Watt. Coil Ø 16 mm tube	

Y	HIGH PRESSURE ADJUSTMENT RANGES	
A	3 - 210 bar	
D	3 - 55 bar	

Z	OPTIONS	
P	Push Style Manual Override	