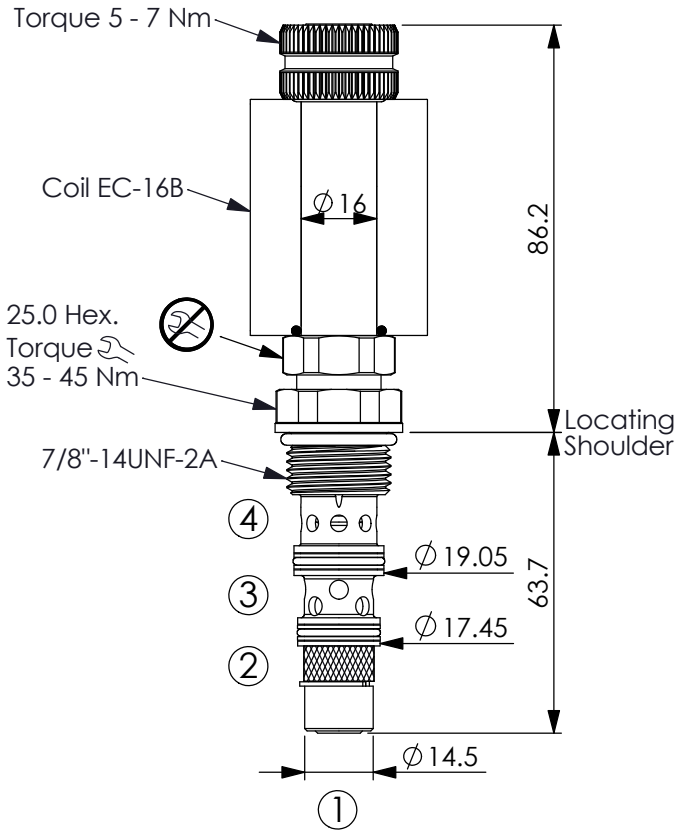
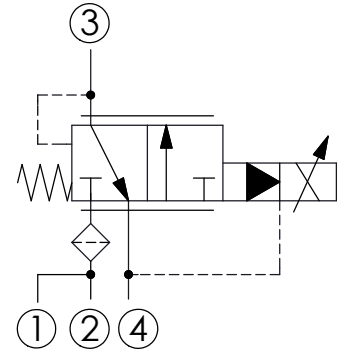


Ordering Code: **PPQ-10WA-X-Y-Z-B1**



UNIT:mm

Illustrations / detail are for reference only. Data subject to change.



TECHNICAL DATA

Max.Operating pressure: 350 bar

Rated flow: 30 l/min

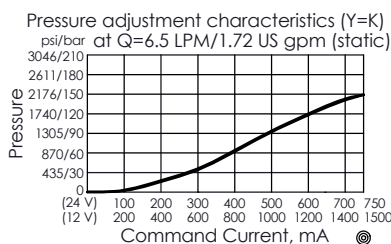
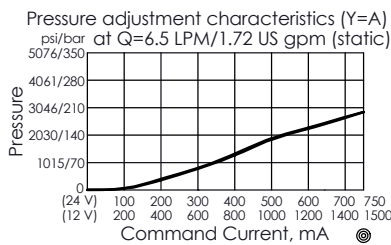
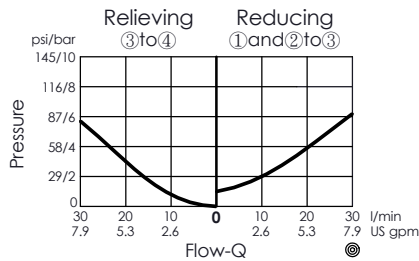
Cavity-Tooling: 10WA-4

Installation torque: 35 - 45 Nm

Weight: 0.249 kg (Without Coil)

Coils must be ordered separately

- Maximum Leakage Approximately (1500 cc/min./200 bar)
- Hysteresis with DC input < 8%
- Hysteresis with dither < 4%
- Linearity with dither < 2%
- Dither should be adjustable between 80-300 Hz (Recommended dither frequency 85 Hz)
- Reseat exceeds 85% of cracking pressure.



X OPERATION

4C 4 Ports · 26 Watt. Coil
Ø 16 mm tube

Y HIGH PRESSURE ADJUSTMENT RANGES

A 1 - 200 bar

K 1 - 150 bar

Z OPTIONS

N Non-adjustable

