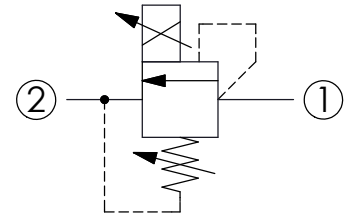
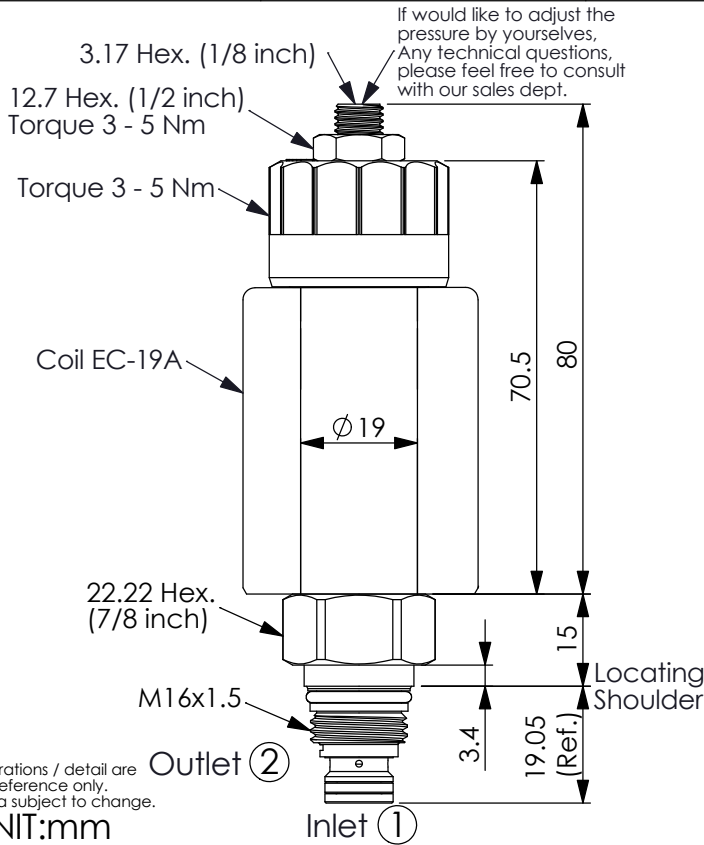


PILOT CAPACITY PROPORTIONAL RELIEF VALVE (Inverse Direct Acting, High Pressure Setting with No Command)

Ordering Code: **PRA-8A-X-Y-Z-74**

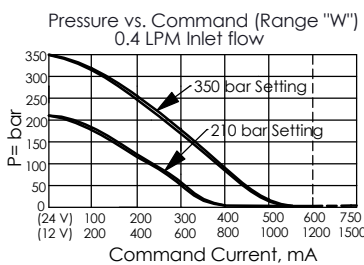
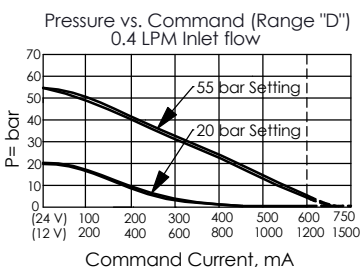
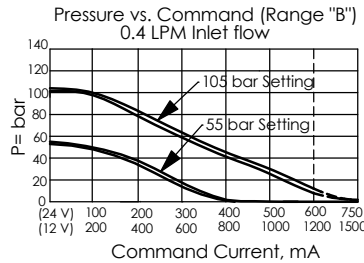
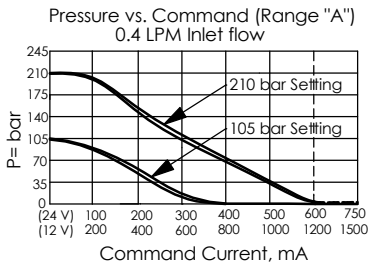
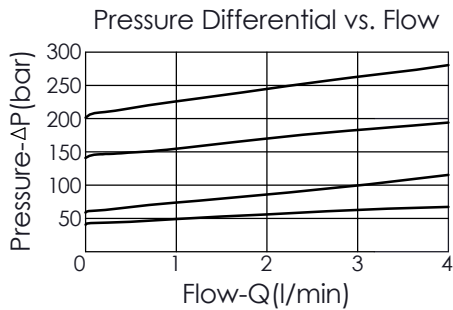


TECHNICAL DATA

Max. Operating pressure:	350 bar
Rated flow:	1 l/min
(Max. flow:	2 l/min)
(Refer To Performance Chart)	
Cavity-Tooling:	8A-2
Installation torque:	27 - 33 Nm
Weight:	0.211 kg (Without Coil)

Coils must be ordered separately

- Maximum Valve Leakage at Reseat Approximately (25 cc/min.)
- Reseat exceeds 85% of cracking pressure
- Back pressure on the tank port (port ②) is directly additive at a 1:1 ratio to valve setting
- Hysteresis with DC input < 8%
- Hysteresis with dither < 4%
- Linearity with dither < 2%
- Dither should be adjustable between 80-300 Hz (Recommended dither frequency 85 Hz)



X OPERATION

2D 2 Ports · 22 Watt. Coil
 $\phi 19$ mm tube

Y HIGH PRESSURE ADJUSTMENT RANGES (RECOMMEND PRESSURE RANGE)

Customer has to specify a relief setting that falls within the selected pressure range

A 210 - 105 bar

B 105 - 55 bar

D 55 - 20 bar

W 350 - 210 bar

- High pressure setting with no command.
- The factory pressure setting is based on using with main valve RV11A30CL.
- In order to meet the pressure requirement and reduce the setting inaccuracy, please contact Winner if you need pressure setting and inform the main valve you are going to used with.
- If pressure control beyond the range is required, please contact the Winner sales department.

Z OPTIONS

L Leakproof hex. socket screw. (Standard Type)

