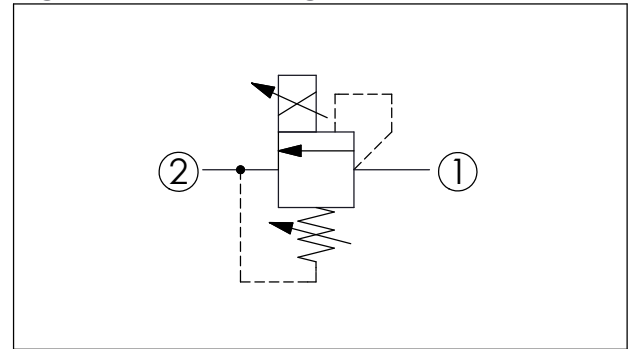
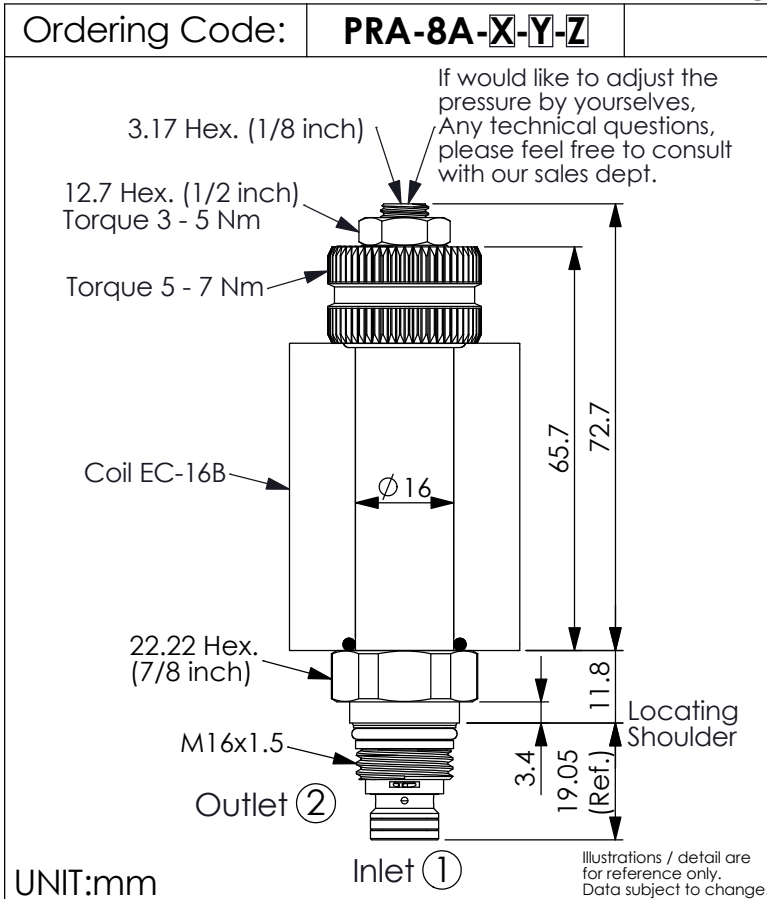




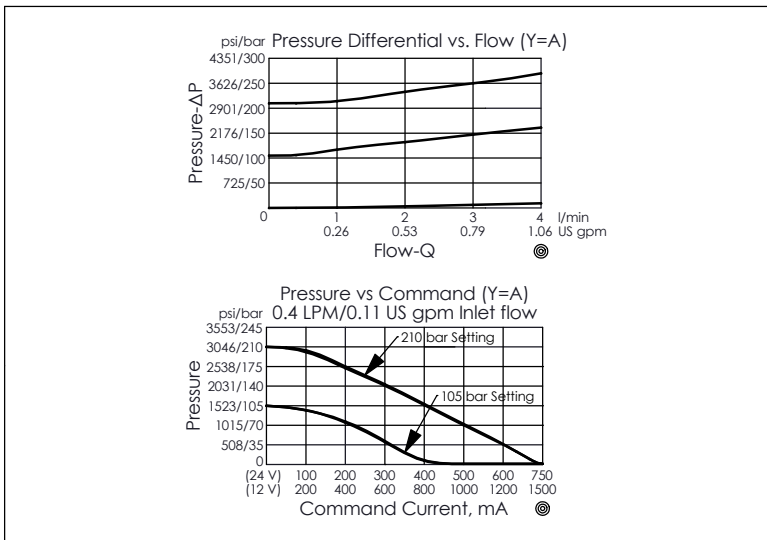
# PILOT CAPACITY PROPORTIONAL RELIEF VALVE

(Inverse Direct Acting, High Pressure Setting with No Command)



TECHNICAL DATA	
Max. Operating pressure:	350 bar
Rated flow:	1 l/min
(Max. flow:	2 l/min)
(Refer To Performance Chart)	
Cavity-Tooling:	8A-2
Installation torque:	27 - 33 Nm
Weight:	0.136 kg (Without Coil)
Coils must be ordered separately	

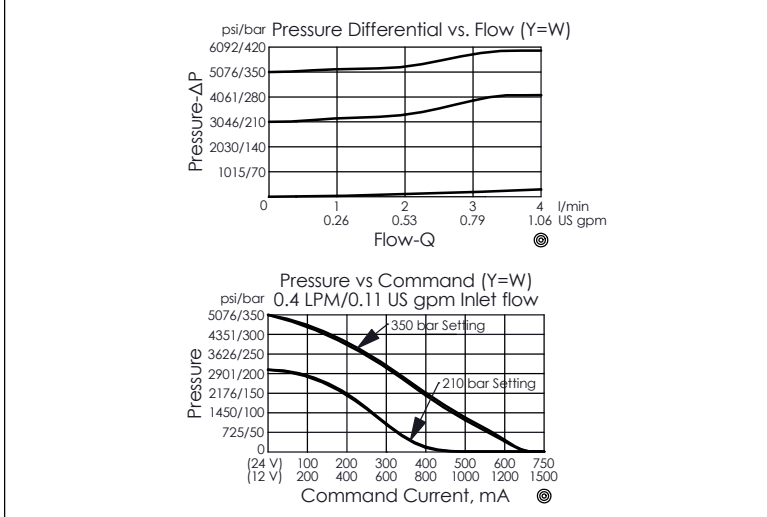
- Maximum Valve Leakage at Reseat Approximately (25 cc/min.)
- Reseat exceeds 85% of cracking pressure.
- Back pressure on the tank port (port ②) is directly additive at a 1:1 ratio to valve setting
- Hysteresis with DC input < 8%
- Hysteresis with dither < 4%
- Linearity with dither < 2%
- Dither should be adjustable between 80 - 300 Hz (Recommended dither frequency 85 - 300 Hz)



X	OPERATION	
2C	2 Ports · 26 Watt. Coil	
	Ø 16 mm tube	

Y	HIGH PRESSURE ADJUSTMENT RANGES (RECOMMEND PRESSURE RANGE)	
	Customer has to specify a relief setting that falls within the selected pressure range	
A	210 - 105 bar	
B	105 - 55 bar	
D	55 - 20 bar	
W	350 - 210 bar	

- High pressure setting with no command.
- In order to meet the pressure requirement and reduce the setting inaccuracy, please contact Winner if you need pressure setting and inform the main valve you are going to use with.
- If pressure control beyond the range is required, please contact the Winner sales department.



Z	OPTIONS	
L	Leakproof hex. socket screw. (Standard Type)	