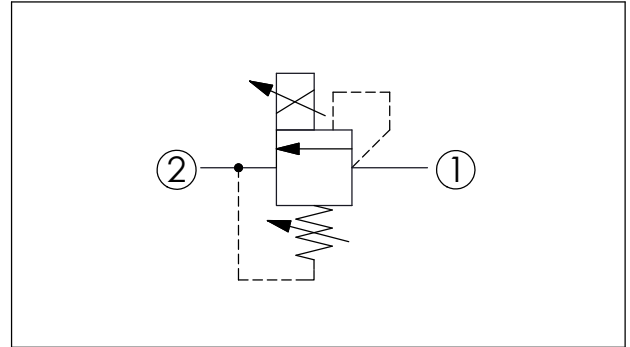
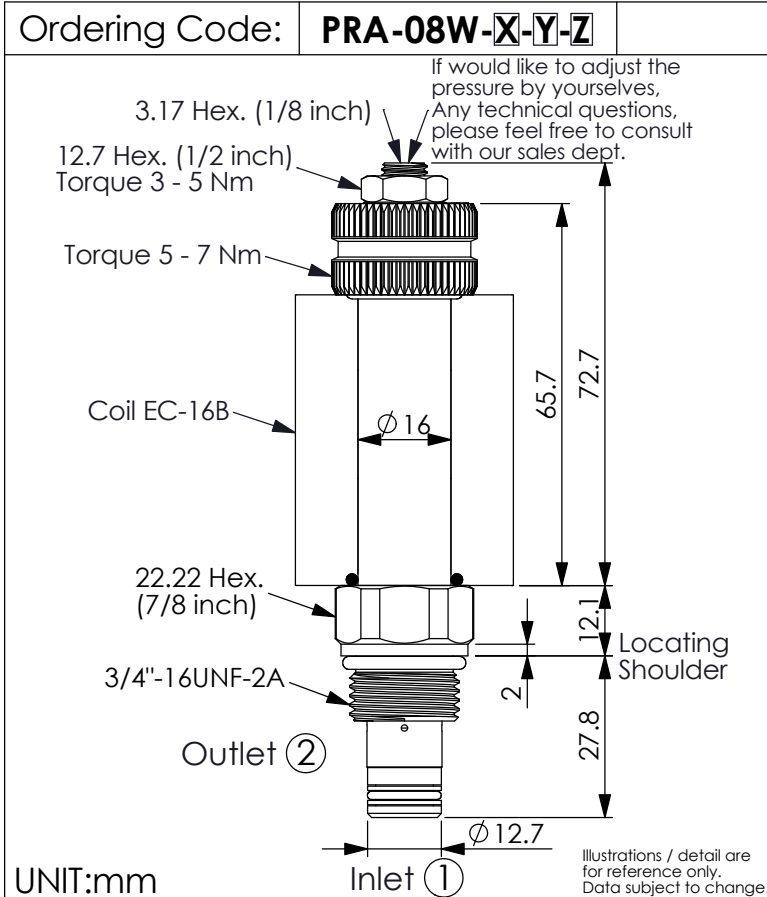
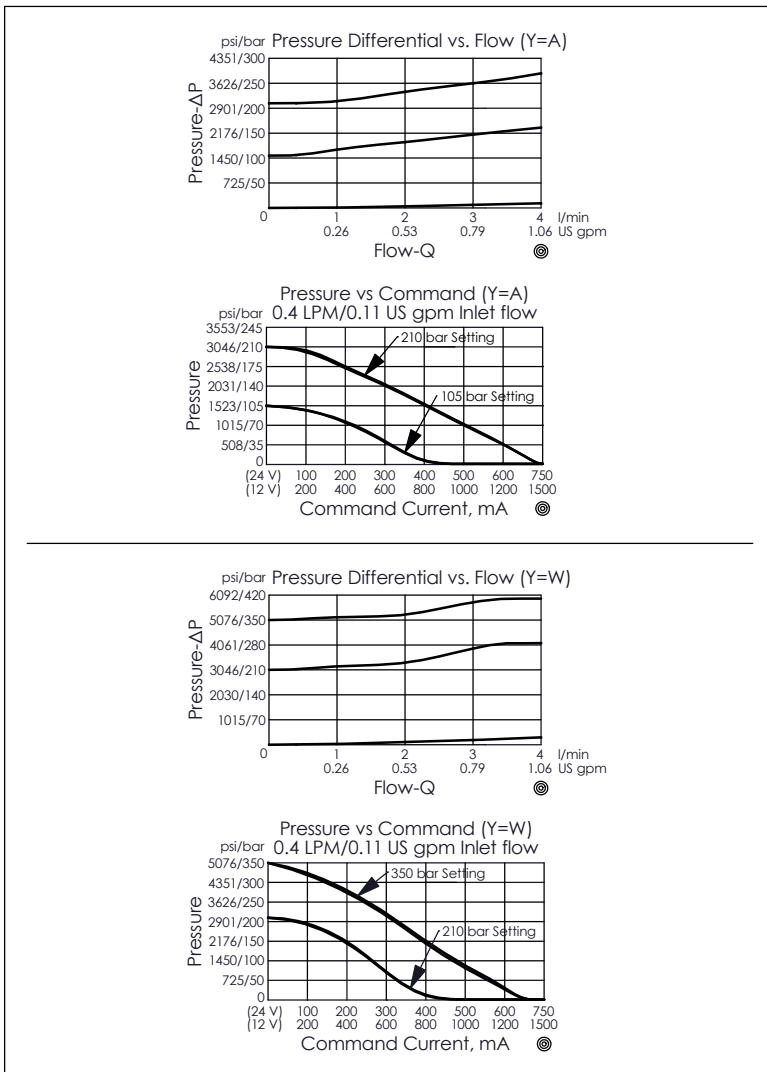




PILOT CAPACITY PROPORTIONAL RELIEF VALVE (Inverse Direct Acting, High Pressure Setting with No Command)



TECHNICAL DATA	
Max. Operating pressure:	350 bar
Rated flow:	1 l/min
(Max. flow:	2 l/min)
(Refer To Performance Chart)	
Cavity-Tooling:	08W-2
Installation torque:	25 - 35 Nm
Weight Approx.:	0.19 kg (Without Coil)
Coils must be ordered separately	
<ul style="list-style-type: none"> Maximum Valve Leakage at Reseat Approximately (25 cc/min.) Reseat exceeds 85% of cracking pressure. Back pressure on the tank port (port ②) is directly additive at a 1:1 ratio to valve setting Hysteresis with DC input < 8% Hysteresis with dither < 4% Linearity with dither < 2% Dither should be adjustable between 80 - 300 Hz (Recommended dither frequency 85 - 300 Hz) 	



X	OPERATION	
2C	2 Ports · 26 Watt. Coil	
	Ø 16 mm tube	

Y	HIGH PRESSURE ADJUSTMENT RANGES (RECOMMEND PRESSURE RANGE)	
	Customer has to specify a relief setting that falls within the selected pressure range	
A	210 - 105 bar	
B	105 - 55 bar	
D	55 - 20 bar	
W	350 - 210 bar	

- High pressure setting with no command.
- In order to meet the pressure requirement and reduce the setting inaccuracy, please contact Winner if you need pressure setting and inform the main valve you are going to use with.
- If pressure control beyond the range is required, please contact the Winner sales department.

Z	OPTIONS	
L	Leakproof hex. socket screw. (Standard Type)	