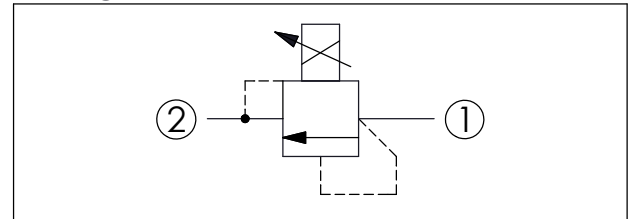
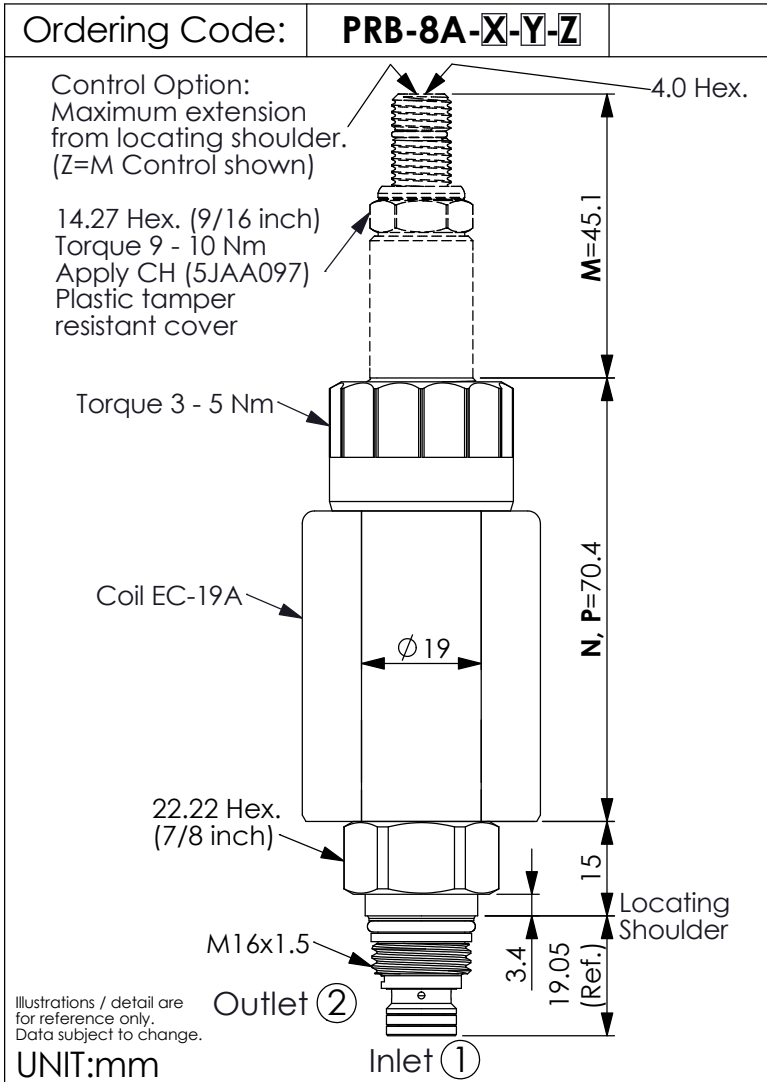




PILOT CAPACITY PROPORTIONAL RELIEF VALVE

(Standard Direct Acting, Low Pressure with No Command)



TECHNICAL DATA	
Max. Operating pressure:	350 bar
Rated flow:	1 l/min
(Max. flow:	2 l/min)
(Refer To Performance Chart)	
Cavity-Tooling:	8A-2
Installation torque:	27 - 33 Nm
Weight:	0.207 (Z=N) kg (Without Coil)
Coils must be ordered separately	
<ul style="list-style-type: none"> Maximum Valve Leakage at Reseat Approximately (25 cc/min.) Reseat exceeds 85% of cracking pressure Back pressure on the tank port (port ②) is directly additive at a 1:1 ratio to valve setting Hysteresis with DC input < 8% Hysteresis with dither < 4% Linearity with dither < 2% Dither should be adjustable between 80-300 Hz (Recommended dither frequency 85 Hz) 	

X	OPERATION
2D	2 Ports - 22 Watt. Coil Ø 19 mm tube

Y	CONTROL PRESSURE RANGES (RECOMMEND PRESSURE RANGE)
A	20 - 210 bar
B	10.5 - 105 bar
D	3.5 - 50 bar
W	35 - 350 bar

If pressure control beyond the range is required, please contact the Winner sales department.

Z	OPTIONS
N	Non-adjustable
M	A Manual Control Adjustment Screw (Emergency or Test Usage) The factory setting is the valve fully open (turn counterclockwise completely). Manual adjustment is allowed in case of electrical failure. Preset spring is allowed (clockwise). For example, when Y=A, manual adjustment pressure is preset at 70 bar, at maximum current, the set pressure is approximately 310 bar. *If the reverse function is required, please choose PRA-8A-2D-[Y]-[Z]-74.
P	Push Style Manual Override

