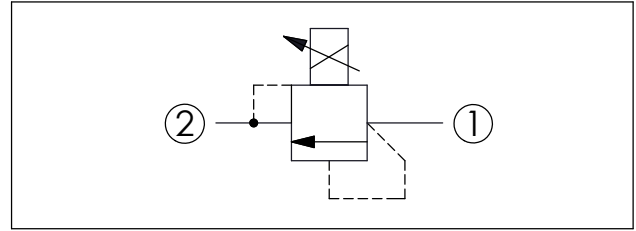
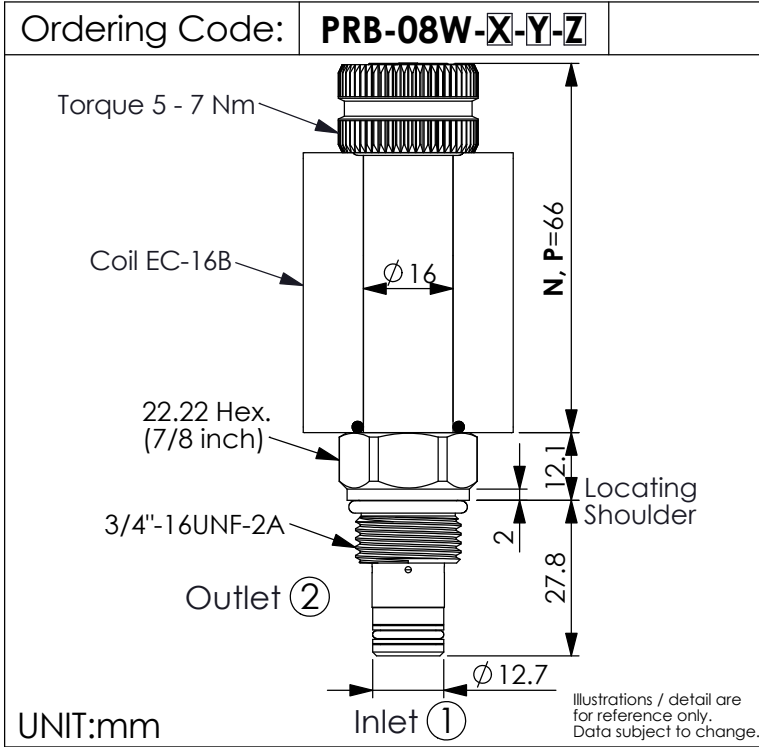


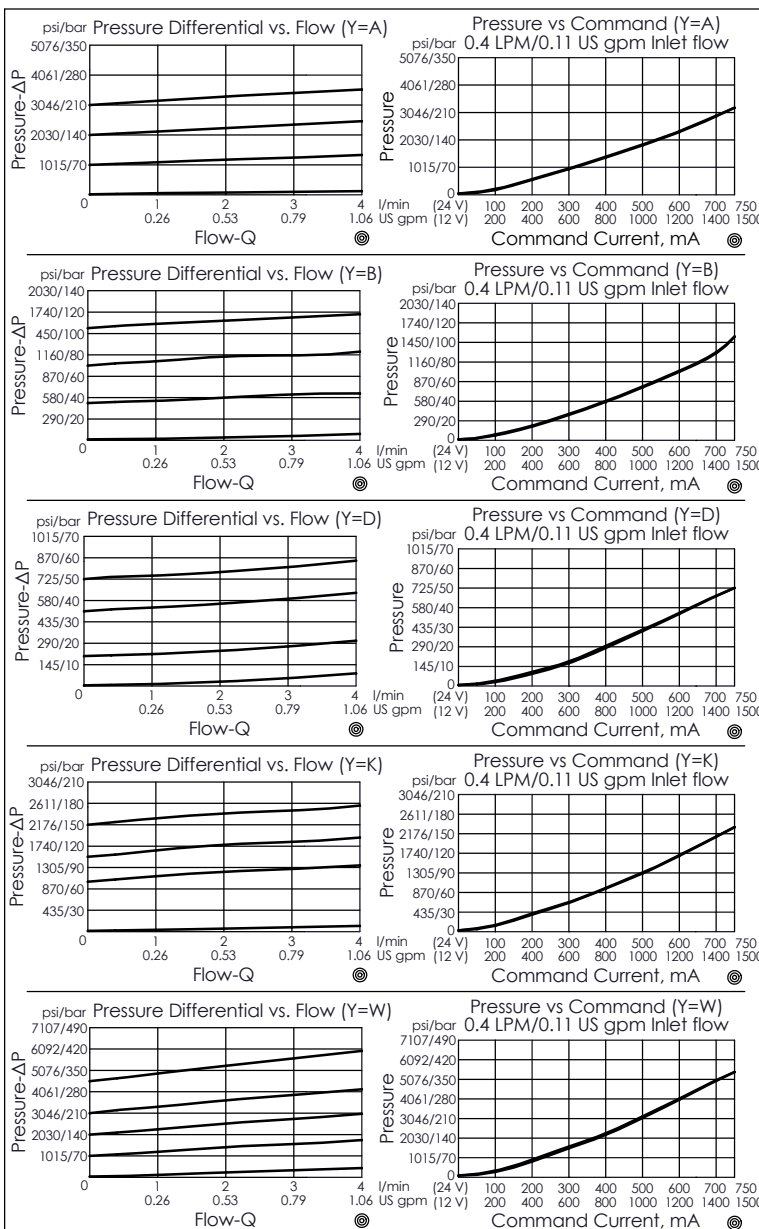


# PILOT CAPACITY PROPORTIONAL RELIEF VALVE

(Standard Direct Acting, Low Pressure with No Command)



TECHNICAL DATA	
Max. Operating pressure:	350 bar
Rated flow:	1 l/min
(Max. flow:	2 l/min)
(Refer To Performance Chart)	
Cavity-Tooling:	08W-2
Installation torque:	25 - 35 Nm
Weight:	0.173 kg (Without Coil)
Coils must be ordered separately	
<ul style="list-style-type: none"> <li>Maximum Valve Leakage at Reseat Approximately (25 cc/min.)</li> <li>Reseat exceeds 85% of cracking pressure</li> <li>Back pressure on the tank port (port ②) is directly additive at a 1:1 ratio to valve setting</li> <li>Hysteresis with DC input &lt; 8%</li> <li>Hysteresis with dither &lt; 4%</li> <li>Linearity with dither &lt; 2%</li> <li>Dither should be adjustable between 80 - 300 Hz (Recommended dither frequency 140 Hz)</li> </ul>	



X	OPERATION
2C	2 Ports - 26 Watt. Coil Ø 16 mm tube

Y	CONTROL PRESSURE RANGES (RECOMMEND PRESSURE RANGE)
A	20 - 210 bar
B	10.5 - 105 bar
D	3.5 - 50 bar
K	10 - 150 bar
W	35 - 350 bar

If pressure control beyond the range is required, please contact the Winner sales department.

Z	OPTIONS
N	Non-adjustable
P	Push Style Manual Override (Manual override is used for valve function check only, not for pressure control.)