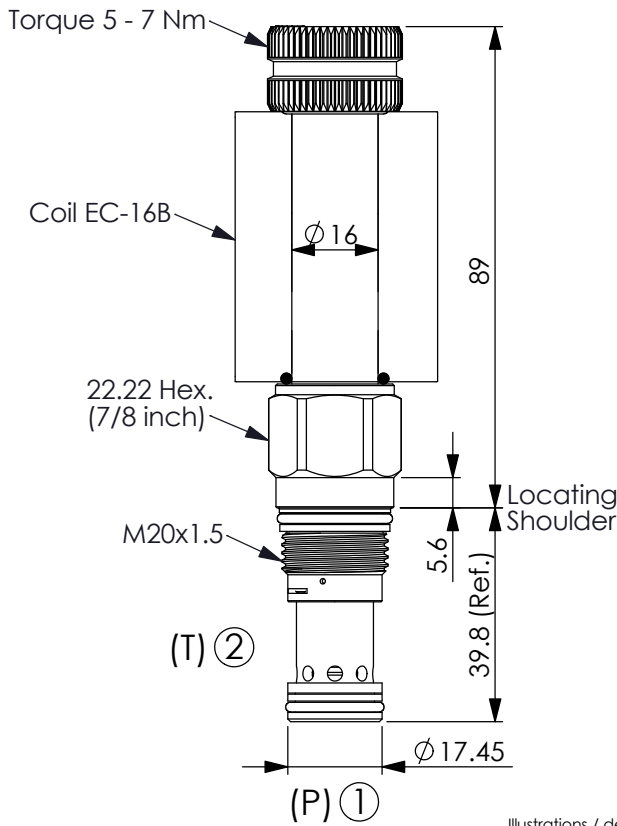
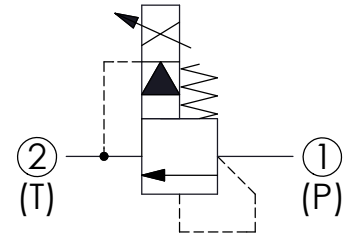


Ordering Code: **PRP-10A-X-Y-Z-B**



UNIT:mm

Illustrations / detail are for reference only. Data subject to change.

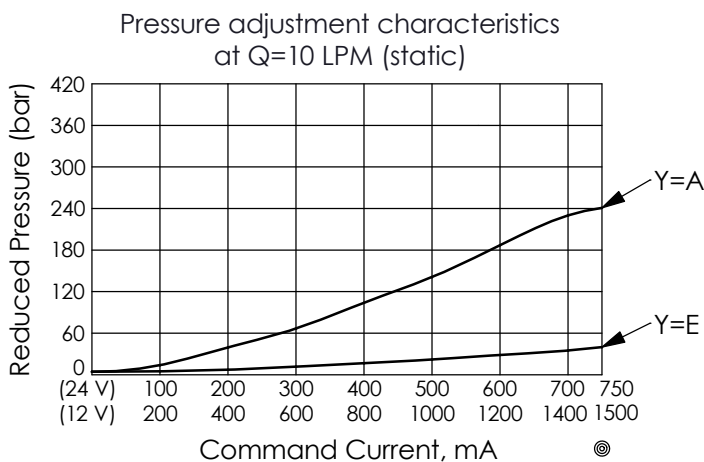
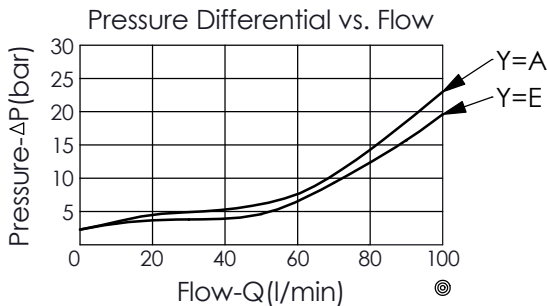


### TECHNICAL DATA

Max.Operating pressure:	350	bar
Rated flow:	95	l/min
Cavity-Tooling:	10A-2	
Installation torque:	40 - 50	Nm
Weight:	0.216	kg (Without Coil)

Coils must be ordered separately

- Maximum Leakage Approximately (30 cc/min./70 bar)
- Reseat exceeds 85% of cracking pressure
- Hysteresis with DC input < 8%
- Hysteresis with dither < 4%
- Linearity with dither < 2%
- Dither should be adjustable between 80 - 300 Hz (Recommended dither frequency 140 - 300 Hz)



<b>X</b>	<b>OPERATION</b>	
<b>2C</b>	2 Ports · 26 Watt. Coil	
	Ø 16 mm tube	

<b>Y</b>	<b>CONTROL PRESSURE RANGES (RECOMMEND PRESSURE RANGE)</b>	
<b>A</b>	5 - 210 bar	
<b>D</b>	3 - 70 bar	
<b>E</b>	2 - 40 bar	

• If pressure control beyond the range is required, please contact the Winner sales department.

<b>Z</b>	<b>OPTIONS</b>	
<b>P</b>	Push Style Manual Override	