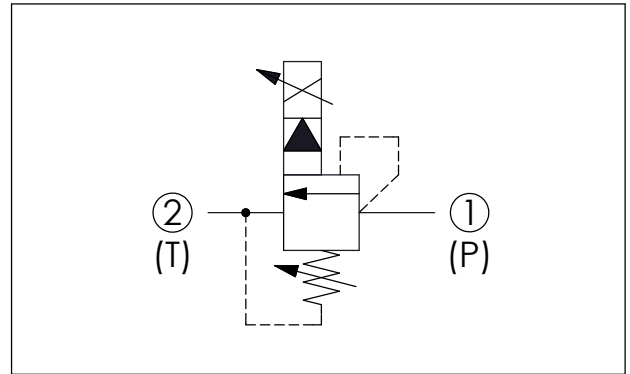
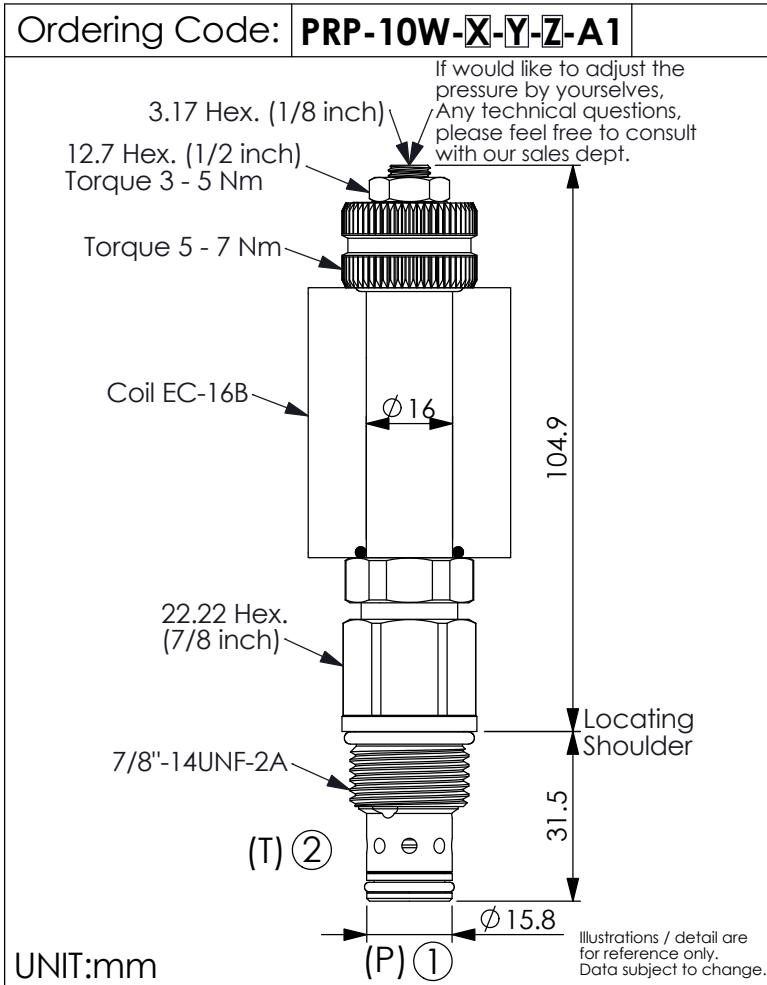
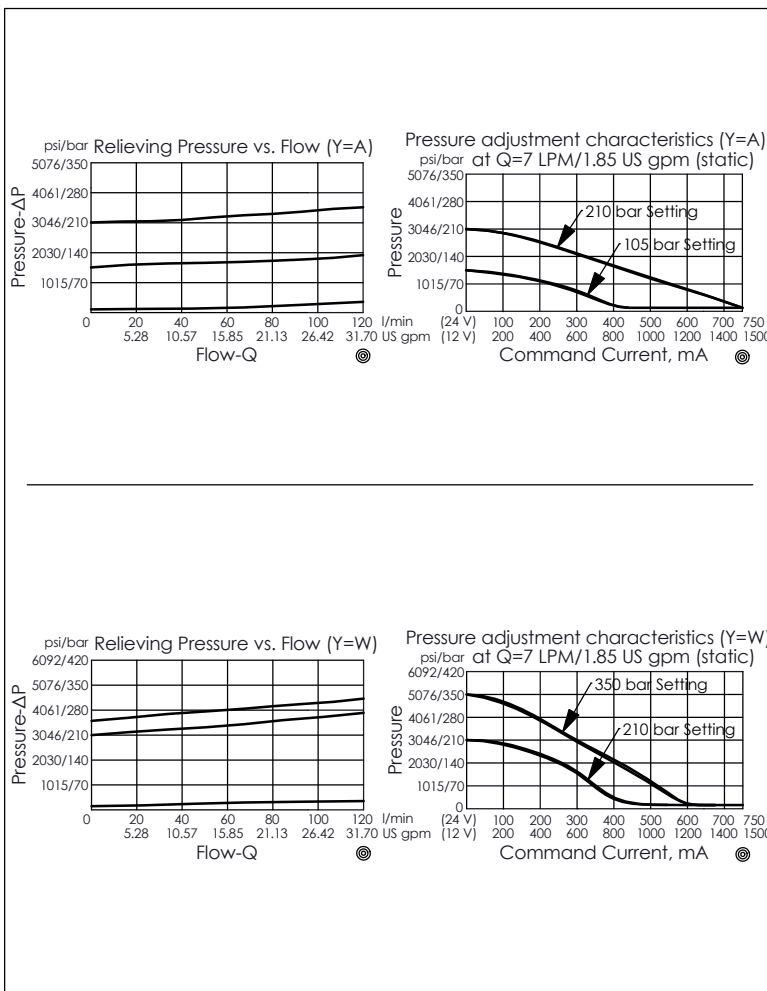


## PROPORTIONAL RELIEF VALVE

(Pilot Operated Inverse Balanced, High Pressure Setting with No Command)



TECHNICAL DATA	
Max. Operating pressure:	350 bar
Rated flow:	95 l/min
(Max. flow:	120 l/min)
Cavity-Tooling:	10W-2
Installation torque:	35 - 45 Nm
Weight:	0.242 kg (Without Coil)
Coils must be ordered separately	
<ul style="list-style-type: none"> <li>• Maximum Leakage Approximately (30 cc/min./70 bar)</li> <li>• Reseat exceeds 85% of cracking pressure</li> <li>• Hysteresis with DC input &lt; 8%</li> <li>• Hysteresis with dither &lt; 4%</li> <li>• Linearity with dither &lt; 2%</li> <li>• Dither should be adjustable between 80 - 300 Hz (Recommended dither frequency 85 - 300 Hz)</li> </ul>	



X	OPERATION	
2C	2 Ports · 26 Watt. Coil	
	Ø 16 mm tube	

Y	HIGH PRESSURE ADJUSTMENT RANGES (RECOMMEND PRESSURE RANGE)	
	Customer has to specify a relief setting that falls within the selected pressure range	
A	210 - 105 bar	
B	105 - 55 bar	
D	55 - 20 bar	
W	350 - 210 bar	

• If pressure control beyond the range is required, please contact the Winner sales department.

Z	OPTIONS	
L	Leakproof hex. socket screw. (Standard Type)	