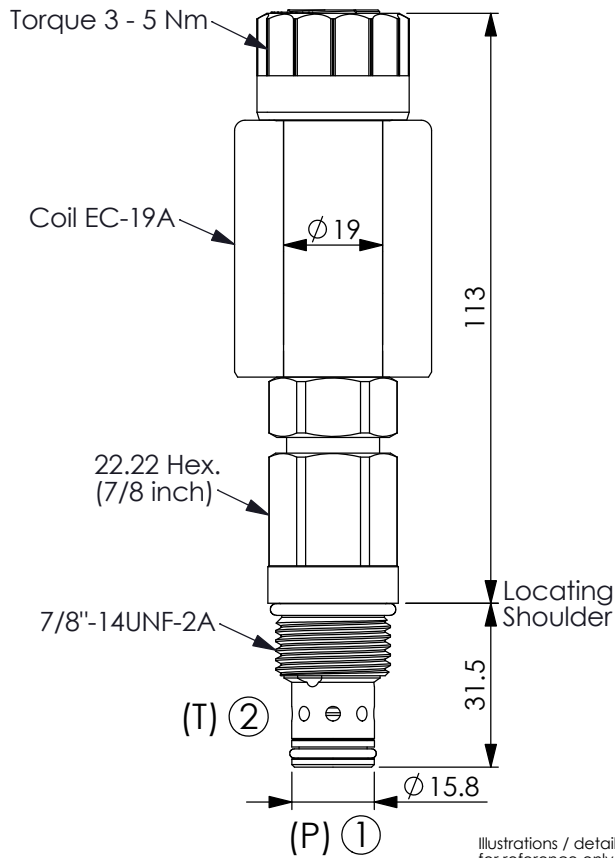
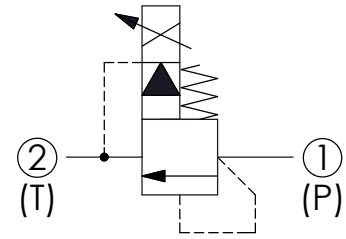


Ordering Code: **PRP-10W-X-Y-Z-B1**



UNIT:mm

Illustrations / detail are for reference only. Data subject to change.



TECHNICAL DATA

Max.Operating pressure: 350 bar

Rated flow: 95 l/min

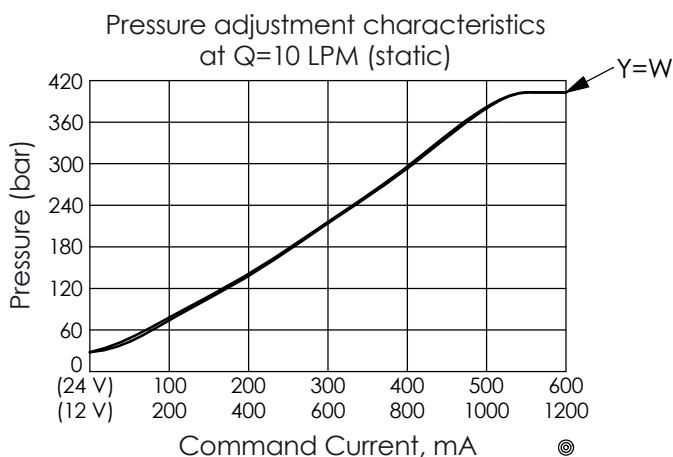
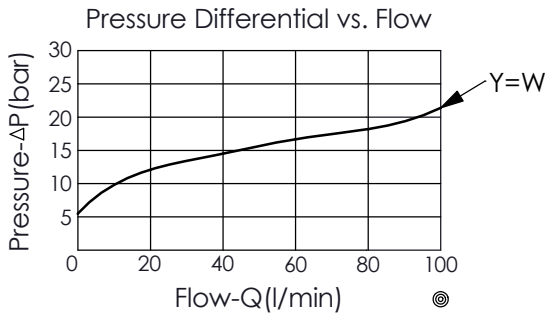
Cavity-Tooling: 10W-2

Installation torque: 35 - 45 Nm

Weight: 0.321 kg (Without Coil)

Coils must be ordered separately

- Maximum Leakage Approximately (30 cc/min./70 bar)
- Reseat exceeds 85% of cracking pressure
- Hysteresis with DC input < 8%
- Hysteresis with dither < 4%
- Linearity with dither < 2%
- Dither should be adjustable between 80 - 300 Hz (Recommended dither frequency 85 - 300 Hz)



X	OPERATION
2D	2 Ports · 22 Watt. Coil Ø 19 mm tube

Y	CONTROL PRESSURE RANGES (RECOMMEND PRESSURE RANGE)
A	20 - 210 bar
B	10.5 - 105 bar
D	3.5 - 50 bar
W	35 - 350 bar

• If pressure control beyond the range is required, please contact the Winner sales department.

Z	OPTIONS
N	Non-adjustable 