

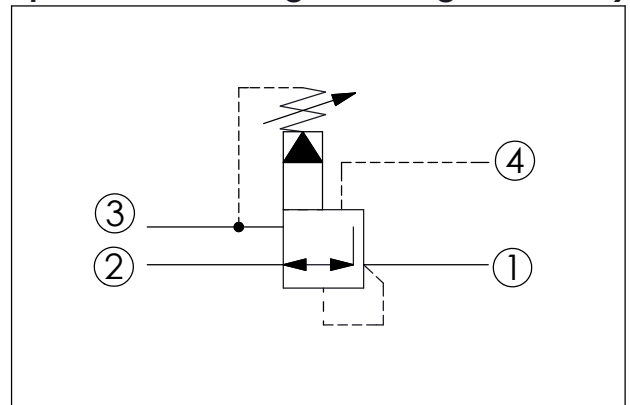
REDUCING/RELIEVING VALVE (Pilot Operated Reducing/Relieving, Ventable)

Ordering Code: **PV-21A-X-Y-Z**

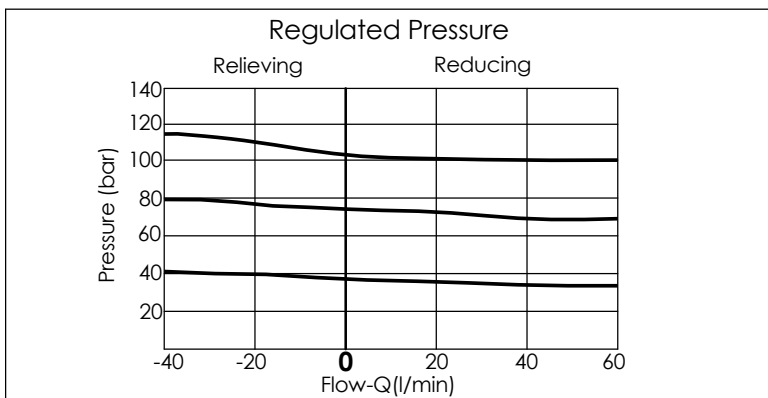
Control Option:
Maximum extension
from locating shoulder.
(Z=L Control shown)

3/8"-24UNF-2A
4.0 Hex.
14.27 Hex. (9/16 inch)
Torque 9-10 Nm
Apply CH (5JAA097)
Plastic tamper
resistant cover
Ø 19
22.22 Hex.
(7/8 inch)
L=77
K=83
Vent (4)
Tank (3)
M20x1.5
Inlet (2)
Reduced Pressure (1)
35.05 (Ref.)
Locating Shoulder

UNIT:mm



TECHNICAL DATA	
Max.Operating pressure:	350 bar
Rated flow:	40 l/min
Cavity-Tooling:	21A-4
Installation torque:	40-50 Nm
Weight:	0.19 (Z=L) kg
· Control Pilot Flow (0.11-0.16 L/min.)	



X	OPERATION	
40	Standard type Low leakage	
*43	Very good pressure control Improved dynamic response	
45	Impact resistant type Low leakage without filter	

Y	SPRINGS	
ADJUSTMENT RANGES (X=40)(X=45)		
A	7-210 bar (14 bar Standard Setting)	Maximum Differential=210 bar
B	3.5-105 bar (14 bar Standard Setting)	Maximum Differential=210 bar
C	10.5-420 bar (14 bar Standard Setting)	
D	1.7-55 bar (14 bar Standard Setting)	Maximum Differential=140 bar
E	1.7-28 bar (14 bar Standard Setting)	Maximum Differential=140 bar
H	2-210 bar (14 bar Standard Setting)	Maximum Differential=210 bar
*J	1.7-105 bar (14 bar Standard Setting)	
N	4-55 bar (14 bar Standard Setting)	Maximum Differential=140 bar
Q	4-28 bar (14 bar Standard Setting)	Maximum Differential=140 bar
W	10.5-315 bar (14 bar Standard Setting)	

* When X = 43, the lowest pressure will be a bit higher than standard.
* Maximum differential pressure...Any technical questions, please feel free to consult with our sales dept.

Z	OPTIONS	
L	Leakproof hex. socket screw.	
K	Handknob with Lock Knob. (Order Code: 6ZAK001)	
C	Stainless Steel Tamper Resistant Cover.	