

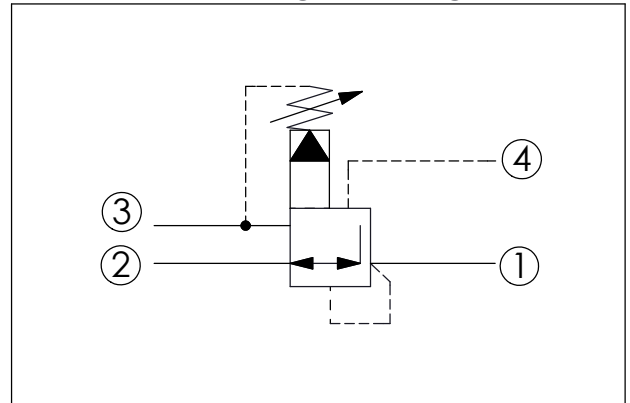
Ordering Code: **PV-22A-X-Y-Z**

Control Option:  
Maximum extension  
from locating shoulder.  
(Z=L Control shown)

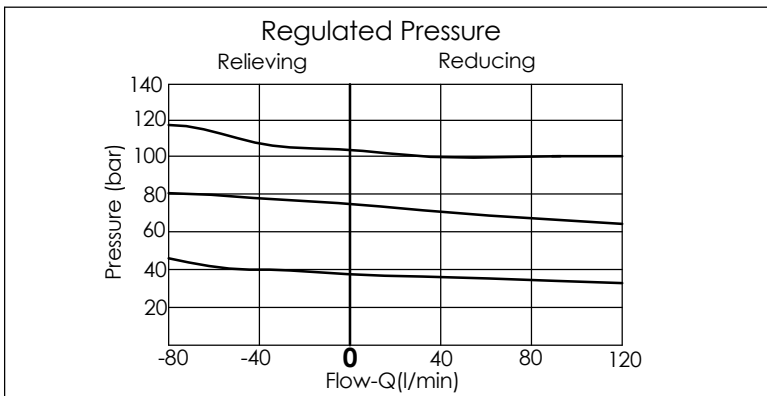
4.0 Hex.  
3/8"-24UNF-2A  
14.27 Hex. (9/16 inch)  
Torque 9 - 10 Nm  
Apply CH (5JAA097)  
Plastic tamper  
resistant cover  
Ø25  
28.57 Hex.  
(1-1/8 inch)  
L=88  
K=94  
Vent ④  
Tank ③  
1.0"-14UNS-2A  
Inlet ②  
Reduced Pressure ①  
35.12 (Ref.)  
Locating Shoulder

UNIT:mm

Illustrations / detail are  
for reference only.  
Data subject to change.



TECHNICAL DATA	
Max. Operating pressure:	350 bar
Rated flow:	80 l/min
Cavity-Tooling:	22A-4
Installation torque:	60 - 70 Nm
Weight:	0.33 (Z=L) kg
· Control Pilot Flow (0.16-0.25 L/min.)	



X	OPERATION	
40	Standard type Low leakage	
*43	Very good pressure control Improved dynamic response	
45	Impact resistant type Low leakage without filter	

Y	SPRINGS	
	ADJUSTMENT RANGES (X=40) (X=45)	
A	7 - 210 bar (14 bar Standard Setting)	Maximum Differential=210 bar
B	3.5 - 105 bar (14 bar Standard Setting)	Maximum Differential=210 bar
D	1.7 - 55 bar (14 bar Standard Setting)	Maximum Differential=140 bar
E	1.7 - 28 bar (14 bar Standard Setting)	Maximum Differential=140 bar
H	2 - 210 bar (14 bar Standard Setting)	Maximum Differential=210 bar
*J	1.7 - 105 bar (14 bar Standard Setting)	
N	4 - 55 bar (14 bar Standard Setting)	Maximum Differential=140 bar
Q	4 - 28 bar (14 bar Standard Setting)	Maximum Differential=140 bar
W	10.5 - 315 bar (14 bar Standard Setting)	

\* When X = 43, the lowest pressure will be a bit higher than standard.  
\* Maximum differential pressure...Any technical questions, please feel free to consult with our sales dept.

Z	OPTIONS	
L	Leakproof hex. socket screw.	
K	Handknob with Lock Knob. (Order Code: 6ZAK001)	
C	Stainless Steel Tamper Resistant Cover.	