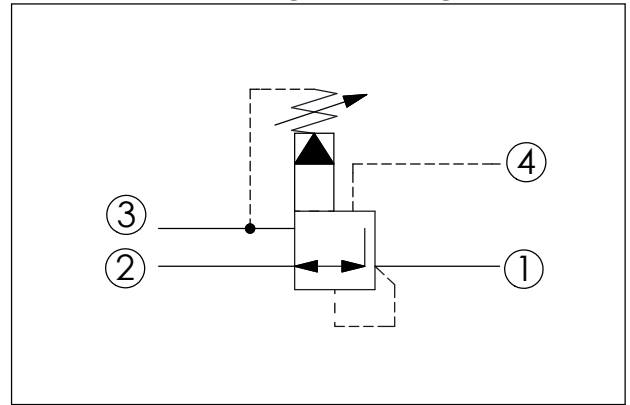
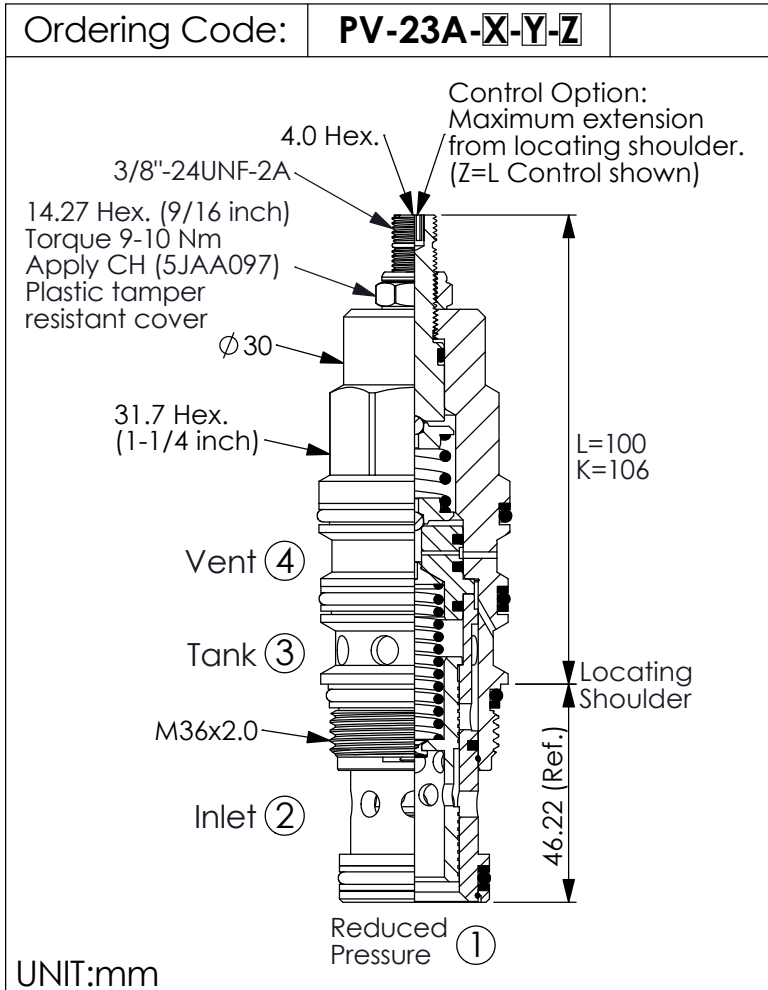
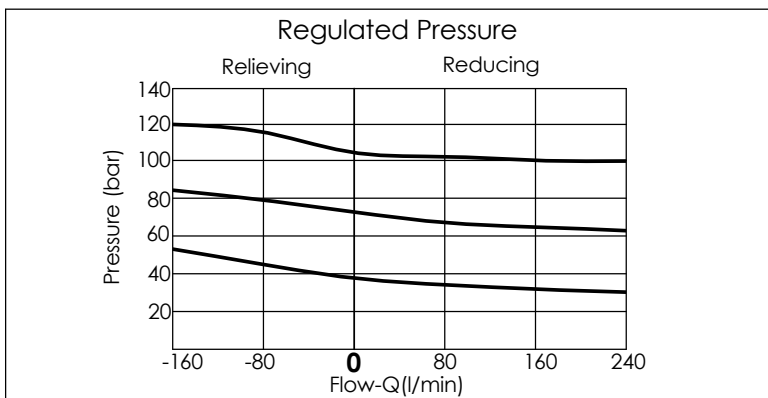


## REDUCING/RELIEVING VALVE (Pilot Operated Reducing/Relieving, Ventable)



| TECHNICAL DATA                          |               |
|---|---------------|
| Max.Operating pressure:                 | 350 bar       |
| Rated flow:                             | 160 l/min     |
| Cavity-Tooling:                         | 23A-4         |
| Installation torque:                    | 200-215 Nm    |
| Weight:                                 | 0.70 (Z=L) kg |
| · Control Pilot Flow (0.25-0.33 L/min.) |               |



| X   | OPERATION   |  |
|-----|---|--|
| 40  | Standard type<br>Low leakage                            |  |
| *43 | Very good pressure control<br>Improved dynamic response |  |
| 45  | Impact resistant type<br>Low leakage without filter     |  |

| Y                              | SPRINGS                                |                              |
|--------------------------------|--|------------------------------|
| ADJUSTMENT RANGES (X=40)(X=45) |  |                              |
| A                              | 7-210 bar (14 bar Standard Setting)    | Maximum Differential=210 bar |
| B                              | 3.5-105 bar (14 bar Standard Setting)  | Maximum Differential=210 bar |
| D                              | 1.7-55 bar (14 bar Standard Setting)   | Maximum Differential=140 bar |
| E                              | 1.7-28 bar (14 bar Standard Setting)   | Maximum Differential=140 bar |
| H                              | 2-210 bar (14 bar Standard Setting)    | Maximum Differential=210 bar |
| *J                             | 1.7-105 bar (14 bar Standard Setting)  |                              |
| N                              | 4-55 bar (14 bar Standard Setting)     | Maximum Differential=140 bar |
| Q                              | 4-28 bar (14 bar Standard Setting)     | Maximum Differential=140 bar |
| W                              | 10.5-315 bar (14 bar Standard Setting) |                              |

\* When X = 43, the lowest pressure will be a bit higher than standard.  
\* Maximum differential pressure...Any technical questions, please feel free to consult with our sales dept.

| Z | OPTIONS   |  |
|---|---|--|
| L | Leakproof hex. socket screw.                      |  |
| K | Handknob with Lock Knob.<br>(Order Code: 6ZAK001) |  |
| C | Stainless Steel Tamper Resistant Cover.           |  |