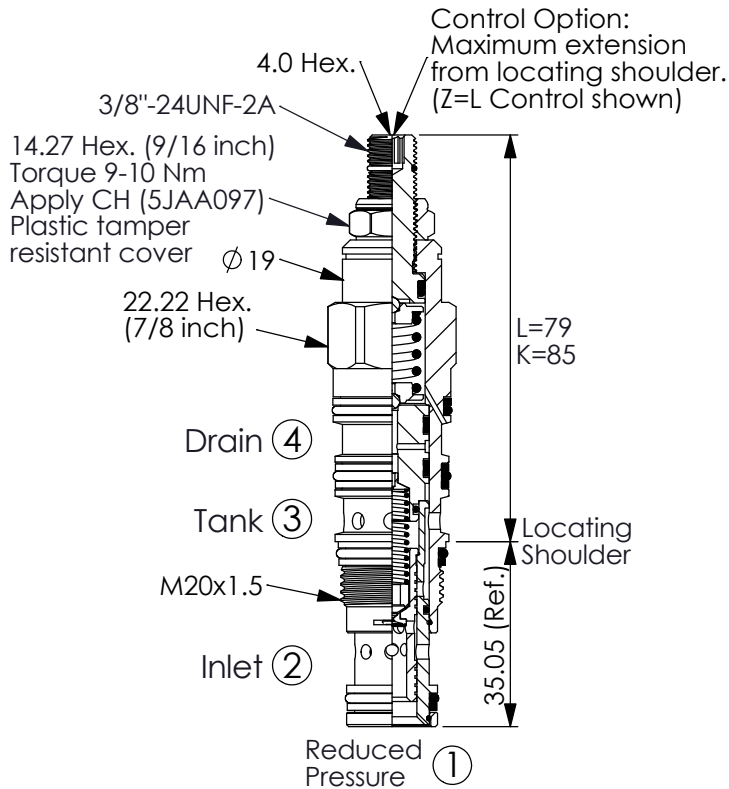
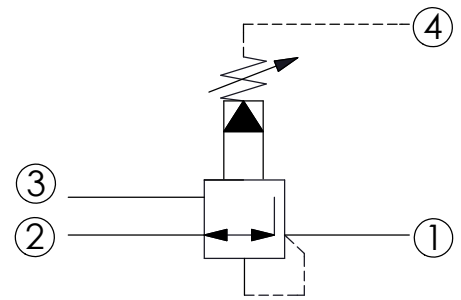


REDUCING/RELIEVING VALVE (Pilot Operated Reducing/Relieving, Externally Drained)

Ordering Code: **PW-21A-X-Y-Z**

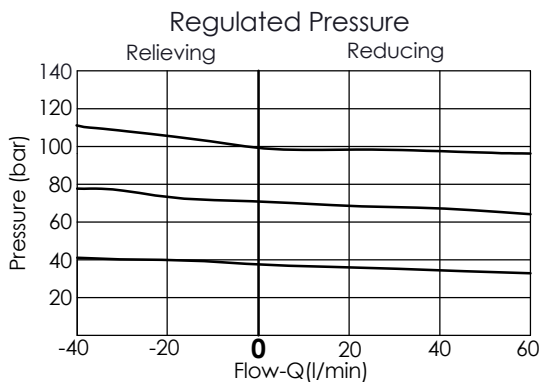


UNIT:mm



TECHNICAL DATA

Max.Operating pressure:	350	bar
Rated flow:	40	l/min
Cavity-Tooling:	21A-4	
Installation torque:	40-50	Nm
Weight:	0.19 (Z=L)	kg
· Control Pilot Flow (0.11-0.16 L/min.)		



X OPERATION

40	Standard type Low leakage
*43	Very good pressure control Improved dynamic response
45	Impact resistant type Low leakage without filter

Y SPRINGS

ADJUSTMENT RANGES (X=40)(X=45)

A	7-210 bar (14 bar Standard Setting) Maximum Differential=210 bar
B	3.5-105 bar (14 bar Standard Setting) Maximum Differential=210 bar
D	1.7-55 bar (14 bar Standard Setting) Maximum Differential=140 bar
E	1.7-28 bar (14 bar Standard Setting) Maximum Differential=140 bar
H	2-210 bar (14 bar Standard Setting) Maximum Differential=210 bar
※J	1.7-105 bar (14 bar Standard Setting)
N	4-55 bar (14 bar Standard Setting) Maximum Differential=140 bar
Q	4-28 bar (14 bar Standard Setting) Maximum Differential=140 bar
W	10.5-315 bar (14 bar Standard Setting)

* When X = 43, the lowest pressure will be a bit higher than standard.
 ※ Maximum differential pressure...Any technical questions, please feel free to consult with our sales dept.

Z OPTIONS

L	Leakproof hex. socket screw.	
LP	Leakproof hex. socket screw. With stainless steel external metal components	
K	Handknob with Lock Knob. (Order Code: 6ZAK001)	
C	Stainless Steel Tamper Resistant Cover.	