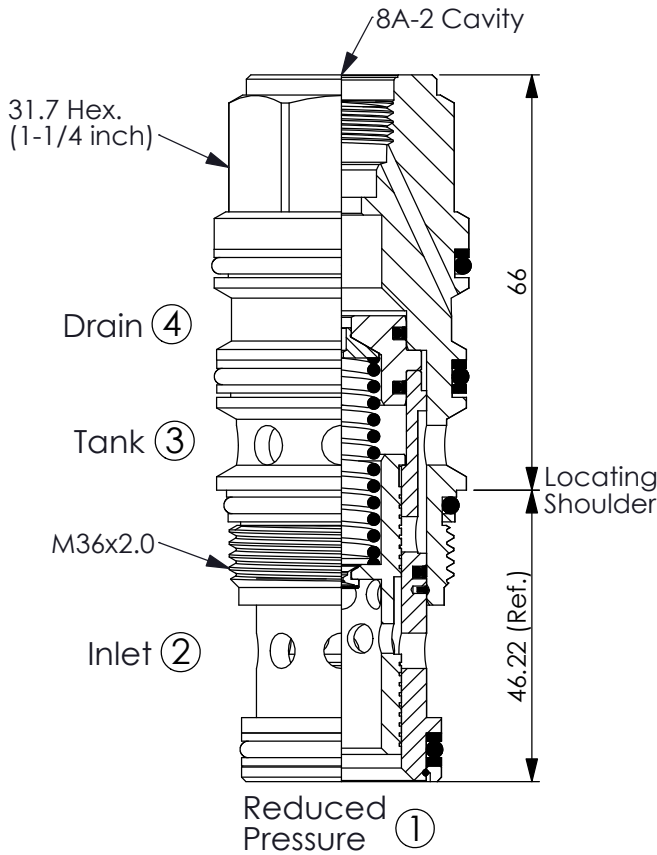
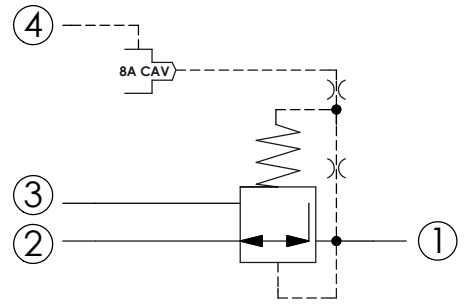


Ordering Code: **PW-23A-X-Y-8**

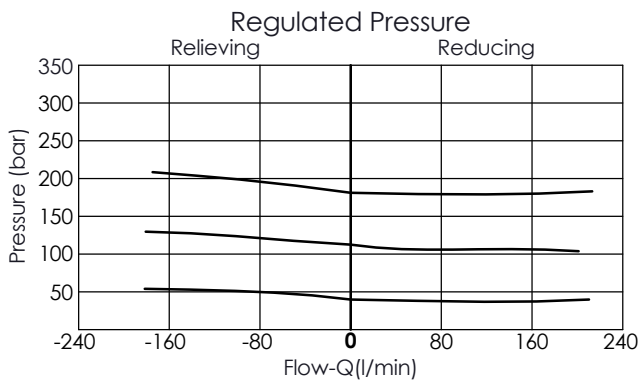


UNIT:mm



TECHNICAL DATA

Max. Operating pressure:	350	bar
Rated flow:	160	l/min
Cavity-Tooling:	23A-4	
Installation torque:	200-215	Nm
Weight:	0.589	kg
<ul style="list-style-type: none"> Control Pilot Flow (0.25-0.33 L/min.) If any specific pressure is needed, please consult our sales department. 		



X OPERATION

40	Standard type Low leakage
*43	Very good pressure control Improved dynamic response
45	Impact resistant type Low leakage without filter

Y

SPRINGS

MINIMUM CONTROL PRESSURE

D

1.7 bar (25 psi)

W

7 bar (100 psi)

Maximum inlet pressure is determined by the bias spring. The D spring is limited to 140 bar (2000 psi) maximum differential pressure and the W spring is limited to 350 bar (5000 psi) maximum inlet pressure.

Z

CAVITIES

8

8A-2 Cavity

- Proportional valve applications: please refer to **PRA-8A-2D-Y-Z-74** · **PRB-8A-2D-Y-Z**
- Any technical questions, please feel free to consult with our sales dept.