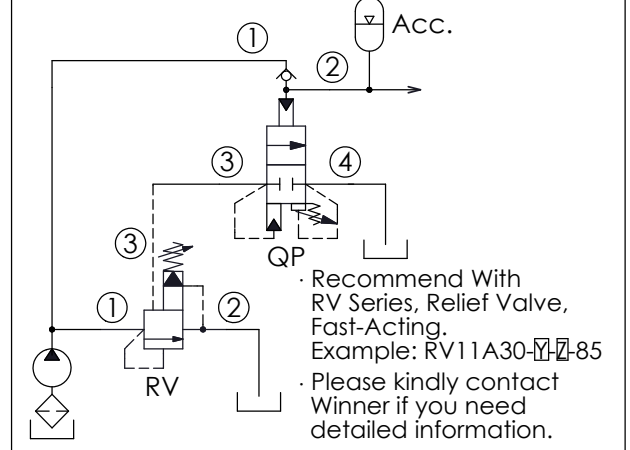


Typical Circuit



### TECHNICAL DATA

Max. Operating pressure: 350 bar

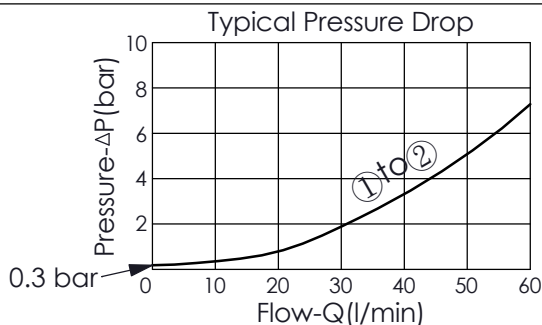
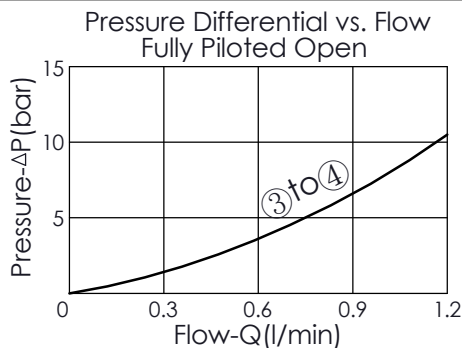
Rated flow: (1) to (2): 60 l/min  
(3) to (4): 0.8 l/min

Cavity-Tooling: 21A-4

Installation torque: 40 - 50 Nm

Weight: 0.187 kg

Note: Careful consideration should be given when selecting an adjustment range. System pressure drops and flows tend to affect the operation of unloading valves.



Y	SPRINGS	
	ADJUSTMENT RANGES	
A	70 - 210 bar	(70 bar Standard Setting)
B	35 - 105 bar	(35 bar Standard Setting)
C	140 - 350 bar	(140 bar Standard Setting)
D	18 - 55 bar	(18 bar Standard Setting)

X	OPERATION	
4A	15% Nominal Differential	
42	20% Nominal Differential	
43	30% Nominal Differential	
45	50% Nominal Differential	

Z	OPTIONS	
L	Leakproof hex. socket screw.	