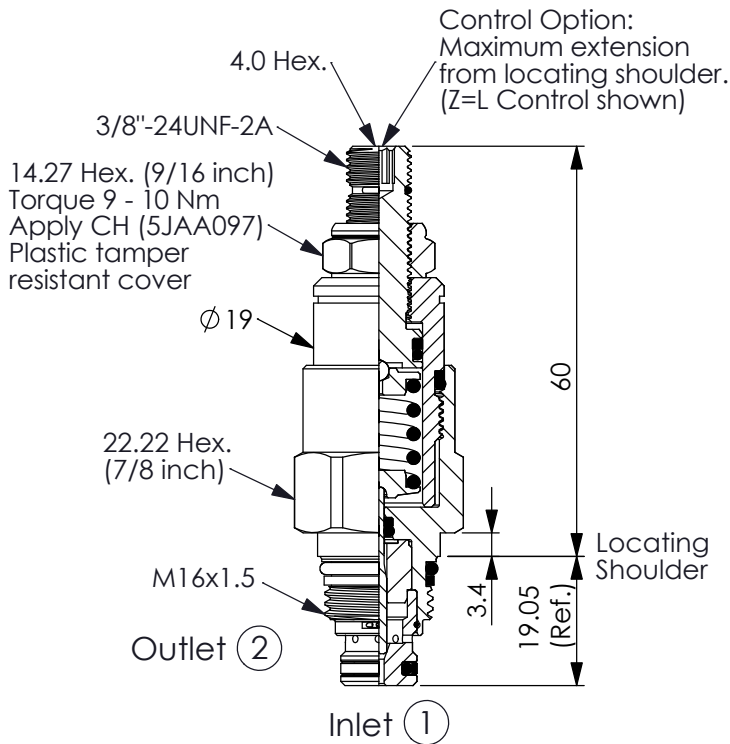
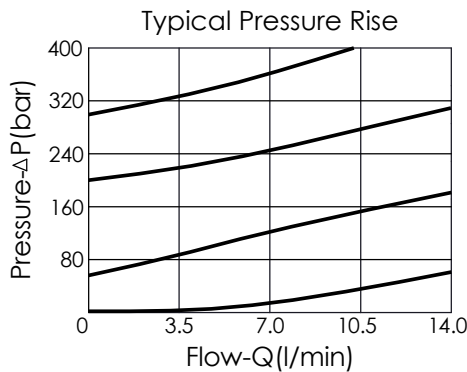


Ordering Code: **RB-8A-X-Y-Z**

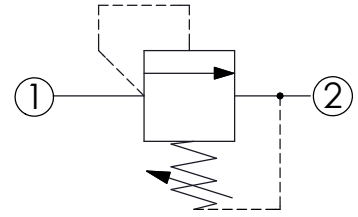


UNIT:mm

Illustrations / detail are for reference only. Data subject to change.



Y	PRESSURE SETTING
A	1.7 - 210 bar (70 bar Standard Setting)
B	1.7 - 105 bar (70 bar Standard Setting)
C	1.7 - 420 bar (70 bar Standard Setting)
D	1.7 - 55 bar (28 bar Standard Setting)
E	1.7 - 28 bar (14 bar Standard Setting)
W	1.7 - 315 bar (70 bar Standard Setting)



### TECHNICAL DATA

Max. Operating pressure:	350	bar
Rated flow:	10	l/min
Cavity-Tooling:	8A-2	
Installation torque:	27 - 33	Nm
Weight:	0.12 (Z=L) 0.14 (Z=KF)	kg

### X OPERATION

**20** ① to ② (P to T)

- Response Time-Typical (2 ms)
- Maximum Leakage Approximately (1 cc/min./70 bar)

### Z OPTIONS

L	Leakproof hex. socket screw.	
LP	Leakproof hex. socket screw. With stainless steel external metal components	
K	Handknob with Lock Knob. (Order Code: 6ZAK001)	
KF	Handknob with Panel Mount.	
T	Three-winged Handknob Kit.	