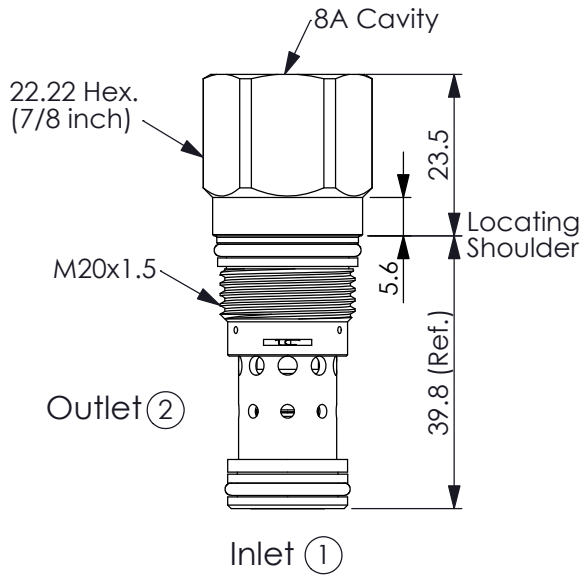


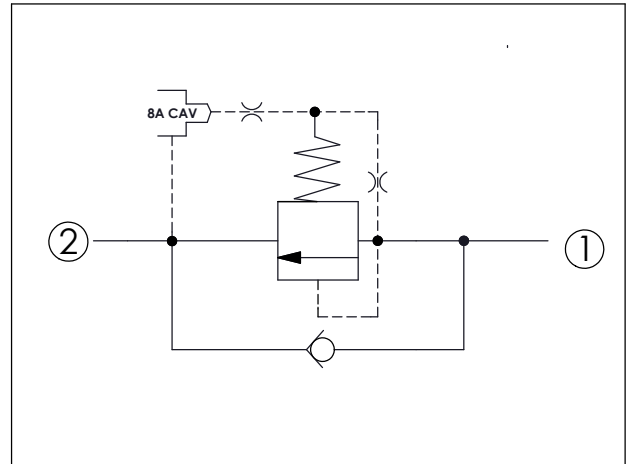
Ordering Code: **RC-10A-X-Y-8**

PATENT PENDING



UNIT:mm

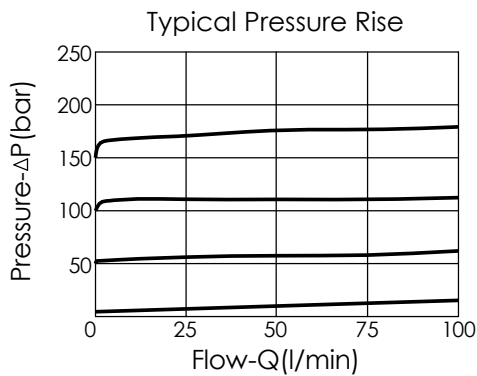
Illustrations / detail are for reference only. Data subject to change.



TECHNICAL DATA

Max.Operating pressure:	350	bar
Rated flow:	95	l/min
Cavity-Tooling:	10A-2	
Installation torque:	40 - 50	Nm
Weight:	0.10	kg

Will accept maximum pressure at port ② but it is necessary to install double back-up rings to valve for cross port relief protection of the brake circuit . If you have any questions, please contact Winner's sales department.



X OPERATION

2G Balanced Poppet

• Maximum Leakage Approximately (15 cc/min./70 bar)

Y	SPRINGS	
	Minimum Control Pressure	Check Valve Cracking Pressure
D	1.7 bar	0.3 bar
W	7 bar	0.3 bar

W spring is suit for higher pressure drop application. Please consult our sales department.