

Ordering Code: **RC-3A-X-Y-8**

**PATENT PENDING**

8A Cavity

28.57 Hex. (1-1/8 inch)

22.2

4.7

Locating Shoulder

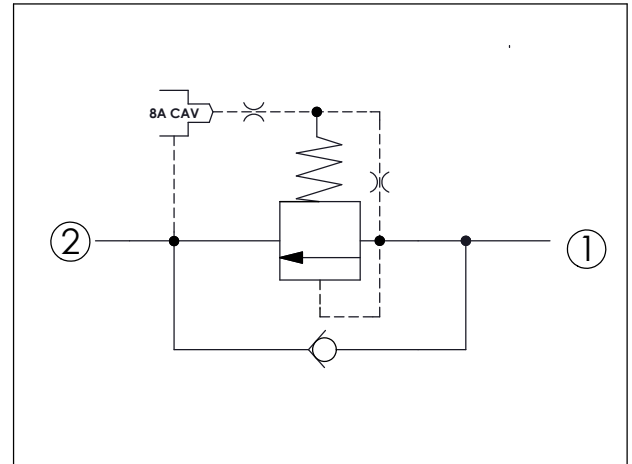
1.0"-14UNS-2A

Outlet (2)

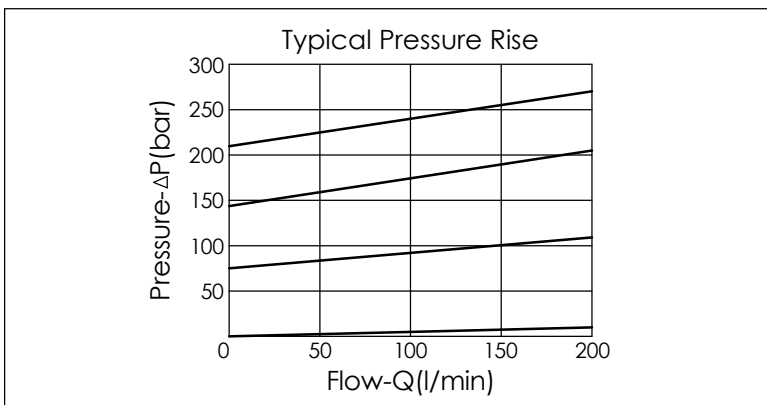
Inlet (1)

47.82 (Ref.)

UNIT:mm



TECHNICAL DATA	
Max. Operating pressure:	350 bar
Rated flow:	200 l/min
Cavity-Tooling:	3A-2
Installation torque:	60-70 Nm
Weight:	0.19 kg
Will accept maximum pressure at port (2); suitable for use in cross port relief circuits.	



X	OPERATION	
2G	Balanced Poppet	
<ul style="list-style-type: none"> <li>Maximum Leakage Approximately (25 cc/min./70 bar)</li> </ul>		

Y	SPRINGS	
	Minimum Control Pressure	Check Valve Cracking Pressure
B	3.5 bar	0.3 bar
W	7 bar	0.3 bar

W spring is suit for higher pressure drop application. Please consult our sales department.

--	--