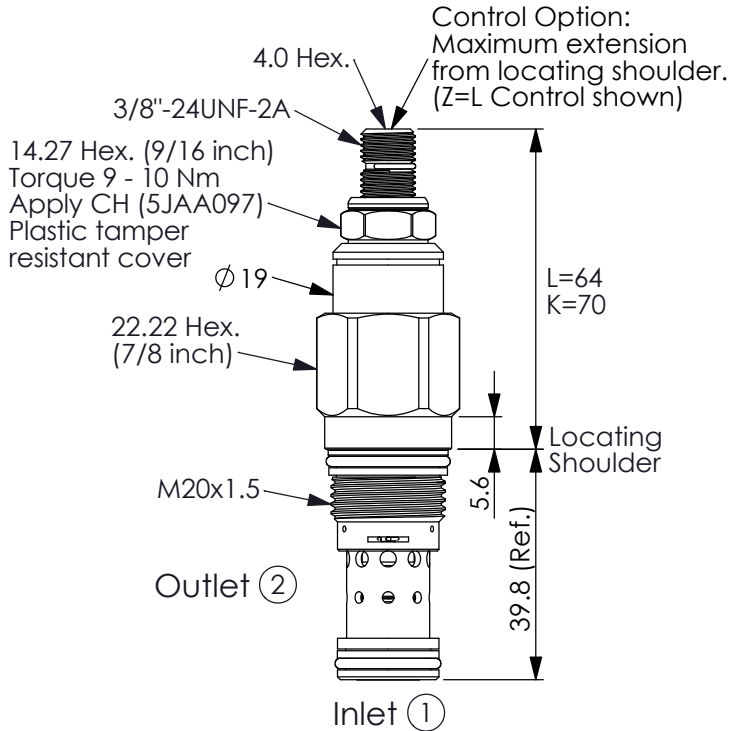


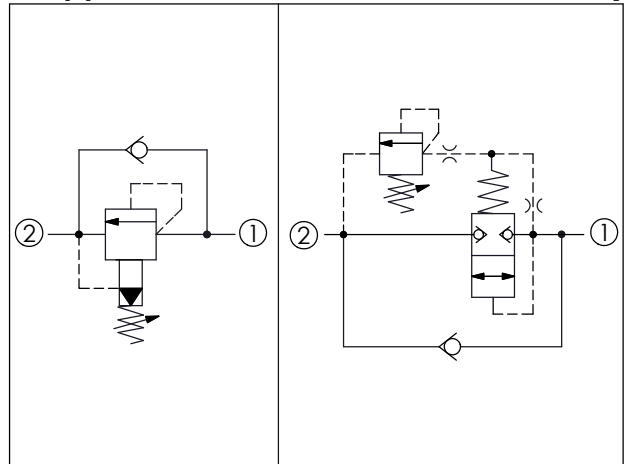
Ordering Code: **RC-10A-X-Y-Z**

PATENT PENDING



UNIT:mm

Illustrations / detail are for reference only. Data subject to change.



TECHNICAL DATA

Max. Operating pressure: 350 bar

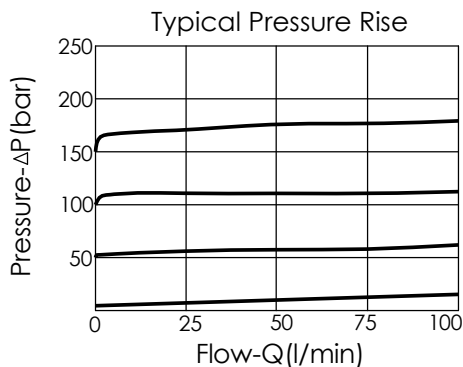
Rated flow: 95 l/min

Cavity-Tooling: 10A-2

Installation torque: 40 - 50 Nm

Weight: 0.15 (Z=L) kg

Will accept maximum pressure at port ② but it is necessary to install double back-up rings to valve for cross port relief protection of the brake circuit. If you have any questions, please contact Winner's sales department.




X OPERATION


2G Balanced Poppet

- Maximum Leakage Approximately (15 cc/min./70 bar)
- If there is a requirement for extremely low leakage, please contact Winner sales department. (Port ② to Port ① Check Valve Cracking Pressure 2 bar)

Z OPTIONS

L Leakproof hex. socket screw. 

C Stainless Steel Tamper Resistant Cover. 

K Handknob with Lock Knob. (Order Code: 6ZAK001) 

T Three-winged Handknob Kit. 

Y SPRINGS

ADJUSTMENT RANGES

| | |
|----------|--|
| A | 7 - 210 bar (70 bar Standard Setting) |
| B | 3.5 - 105 bar (70 bar Standard Setting) |
| C | 10.5 - 420 bar (70 bar Standard Setting) |
| D | 1.7 - 55 bar (28 bar Standard Setting) |
| E | 1.7 - 28 bar (14 bar Standard Setting) |

※ Port ② to Port ① Check Valve Cracking Pressure 0.3 bar