

Ordering Code: **RC-3A-X-Y-Z**

**PATENT PENDING**

Control Option:  
Maximum extension  
from locating shoulder.  
(Z=L Control shown)

4.0 Hex.

3/8"-24UNF-2A

14.27 Hex. (9/16 inch)  
Torque 9-10 Nm  
Apply CH (5JAA097)  
Plastic tamper  
resistant cover

Ø25

28.57 Hex.  
(1-1/8 inch)

1.0"-14UNS-2A

Outlet ②

Inlet ①

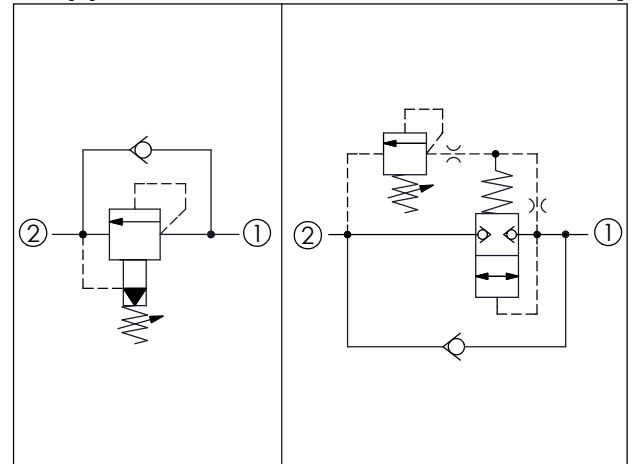
L=54  
K=61

4.7

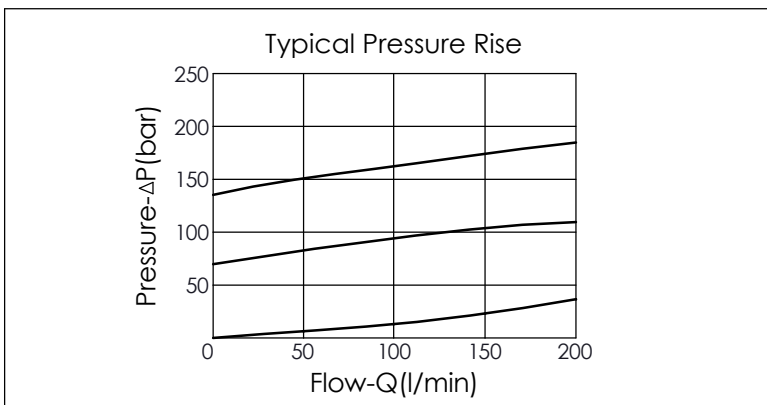
47.82 (Ref.)

Locating  
Shoulder

UNIT:mm



TECHNICAL DATA	
Max. Operating pressure:	350 bar
Rated flow:	200 l/min
Cavity-Tooling:	3A-2
Installation torque:	60-70 Nm
Weight:	0.26 (Z=L) kg
Will accept maximum pressure at port ②; suitable for use in cross port relief circuits.	



X	OPERATION
2G	Balanced Poppet
• Maximum Leakage Approximately (15 cc/min./70 bar)	

Y	SPRINGS	
	ADJUSTMENT RANGES	
A	7-210 bar	(70 bar Standard Setting)
B	3.5-105 bar	(70 bar Standard Setting)
C	10.5-420 bar	(70 bar Standard Setting)
D	1.7-55 bar	(28 bar Standard Setting)
E	1.7-28 bar	(14 bar Standard Setting)

Z	OPTIONS	
L	Leakproof hex. socket screw.	
C	Stainless Steel Tamper Resistant Cover.	
K	Handknob with Lock Knob. (Order Code: 6ZAK001)	
T	Three-winged Handknob Kit.	

※ Port ② to Port ① Check Valve Cracking Pressure 0.3 bar