

Ordering Code: **RD-08W-X-Y-Z**

Turn screw clockwise to increase pressure setting.

Control Option: Maximum extension from locating shoulder. (Z=L Control shown)

3.0 Hex.

M6x1.0

10.0 Hex. Torque 5 - 7 Nm

24.0 Hex.

3/4"-16UNF-2A

Outlet ②

Inlet ①

33

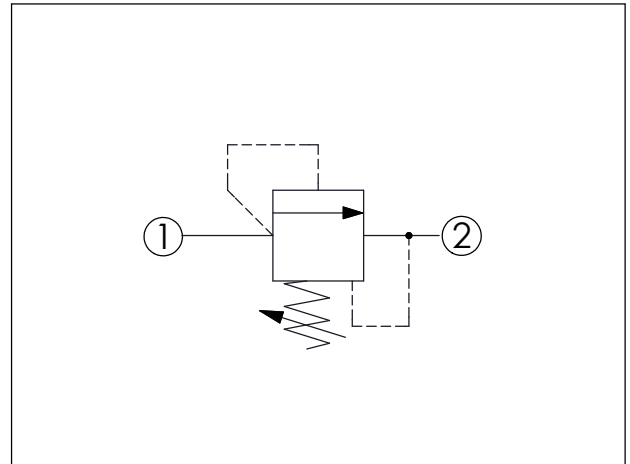
4.9

27.5

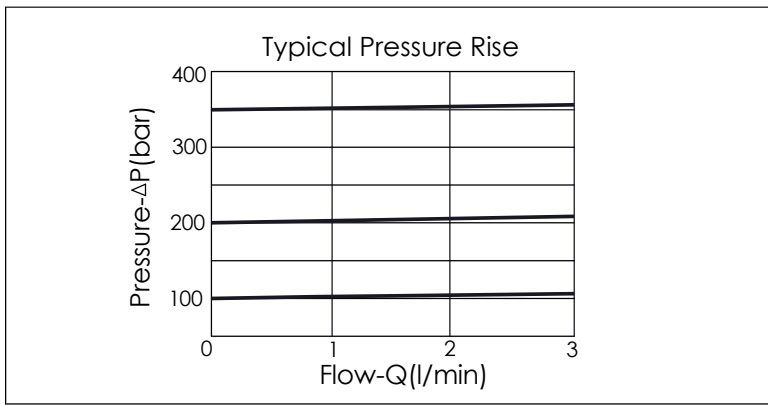
Locating Shoulder

UNIT:mm

Illustrations / detail are for reference only. Data subject to change.



TECHNICAL DATA	
Max. Operating pressure:	350 bar
Rated flow:	3 l/min
Cavity-Tooling:	08W-2
Installation torque:	25 - 28 Nm
Weight:	0.097 (Z=L) kg



X	OPERATION
23	Direct Acting ① to ② (P to T)
	<ul style="list-style-type: none"> Response Time-Typical (2 ms) Maximum Leakage Approximately (5 drops/min. to 85% of nominal setting) Dirt tolerant If you would like to assemble with other knob (for example, Z option= K, T), please kindly choose RD08W23-[Y]-[Z]-A If lockwire holes are required, please contact the Winner sales department

Y	PRESSURE SETTING
A	35 - 210 bar (70 bar Standard Setting)
B	22 - 105 bar (70 bar Standard Setting)
C	70 - 420 bar (70 bar Standard Setting)
D	10 - 55 bar (28 bar Standard Setting)
W	50 - 315 bar (70 bar Standard Setting)

• We also provide 50 - 350 bar option. Please consult our sales department if you need it.
 • This structure is less stable at low-pressure adjustments. For more stable low-pressure control, please select RD08W23-[Y]-[Z]-A.

Z	OPTIONS
L	Leakproof hex. socket screw.
LP	Leakproof hex. socket screw. With stainless steel external metal components
F	Handknob and locknut.