

Ordering Code: **RD-08W-X-Y-Z**

Turn screw clockwise to increase pressure setting.

4.0 Hex.

Control Option: Maximum extension from locating shoulder. (Z=L Control shown)

3/8"-24UNF-2A

14.27 Hex. (9/16 inch)
Torque 9 - 10 Nm
Apply CH (5JAA097)
Plastic tamper resistant cover

Ø25

25.4 Hex. (1.0 inch)

3/4"-16UNF-2A

Outlet ②

Inlet ①

77.1

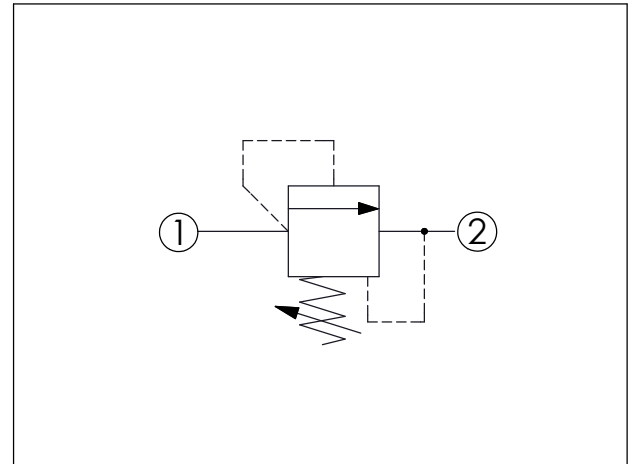
9.7

27.8

Locating Shoulder

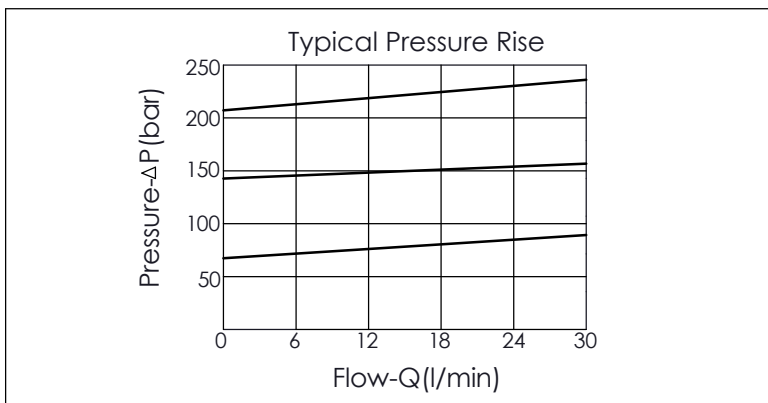
UNIT:mm

Illustrations / detail are for reference only. Data subject to change.



TECHNICAL DATA		
Max. pressure:	350	bar
Rated flow:	22	l/min
Cavity-Tooling:	08W-2	
Installation torque:	25 - 35	Nm
Weight:	0.22 (Z=L)	kg

Will accept maximum pressure at port ② but it is necessary to install double back-up rings to valve for cross port relief circuit application. If you have any questions, please contact Winner's sales department.



X	OPERATION	
24	① to ② (P to T)	

- Response Time-Typical (2 ms)
- Maximum Leakage Approximately (5 drops/min. to 85% of nominal setting)
- Dirt tolerant

Y	PRESSURE SETTING	
A	7 - 210 bar	(70 bar Standard Setting)
D	1.7 - 55 bar	(28 bar Standard Setting)
E	1.7 - 28 bar	(14 bar Standard Setting)
K	3.5 - 155 bar	(70 bar Standard Setting)
W	10.5 - 315 bar	(70 bar Standard Setting)

Z	OPTIONS	
L	Leakproof hex. socket screw.	
C	Stainless Steel Tamper Resistant Cover.	
K	Handknob with Lock Knob. (Order Code: 6ZAK001)	