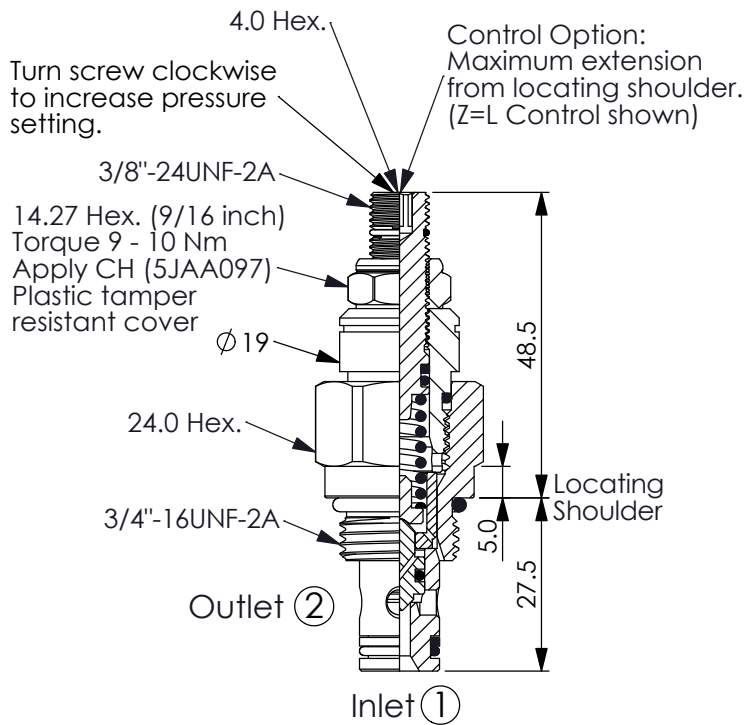
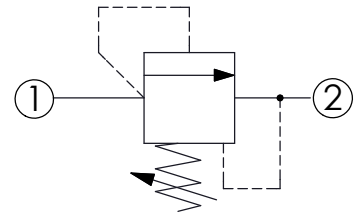


Ordering Code: **RD-08W-X-Y-Z-A**



UNIT:mm

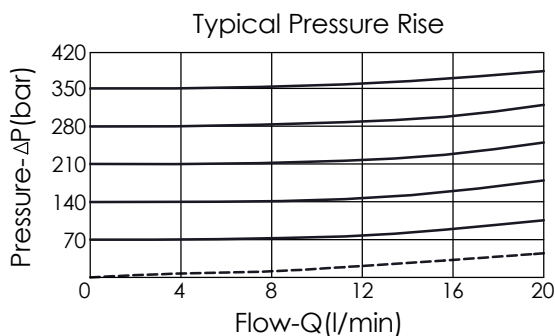
Illustrations / detail are for reference only. Data subject to change.



### TECHNICAL DATA

Max. Operating pressure:	350 bar
Rated flow:	20 l/min
Cavity-Tooling:	08W-2
Installation torque:	25 - 35 Nm
Weight:	0.12 (Z=L) kg

Will accept maximum pressure at port ② but it is necessary to install double back-up rings to valve for cross port relief circuit application. If you have any questions, please contact Winner's sales department.



### X OPERATION

**20** ① to ② (P to T)

- Response Time-Typical (2 ms)
- Maximum Leakage Approximately ( 5 drops/min. to 85% of nominal setting)
- Dirt tolerant

### Y PRESSURE SETTING

<b>A</b>	7 - 210 bar (70 bar Standard Setting)
<b>C</b>	10.5 - 420 bar (70 bar Standard Setting)
<b>D</b>	1.7 - 55 bar (28 bar Standard Setting)
<b>E</b>	1.7 - 28 bar (14 bar Standard Setting)
<b>K</b>	3.5 - 155 bar (70 bar Standard Setting)
<b>W</b>	10.5 - 350 bar (70 bar Standard Setting)

### Z OPTIONS

<b>L</b>	Leakproof hex. socket screw.	
<b>K</b>	Handknob with Lock Knob. (Order Code: 6ZAK001)	
<b>T</b>	Three-winged Handknob Kit.	