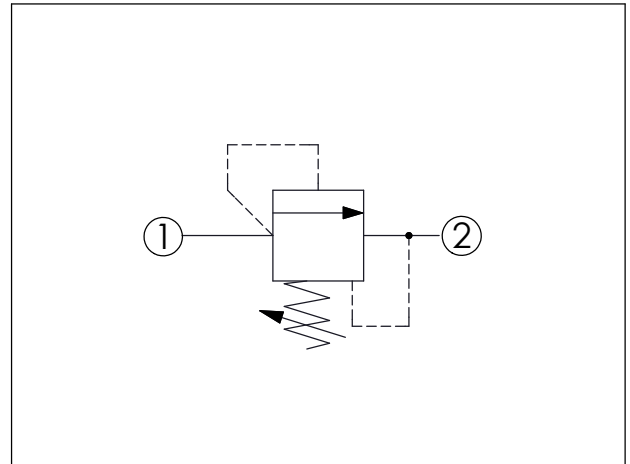
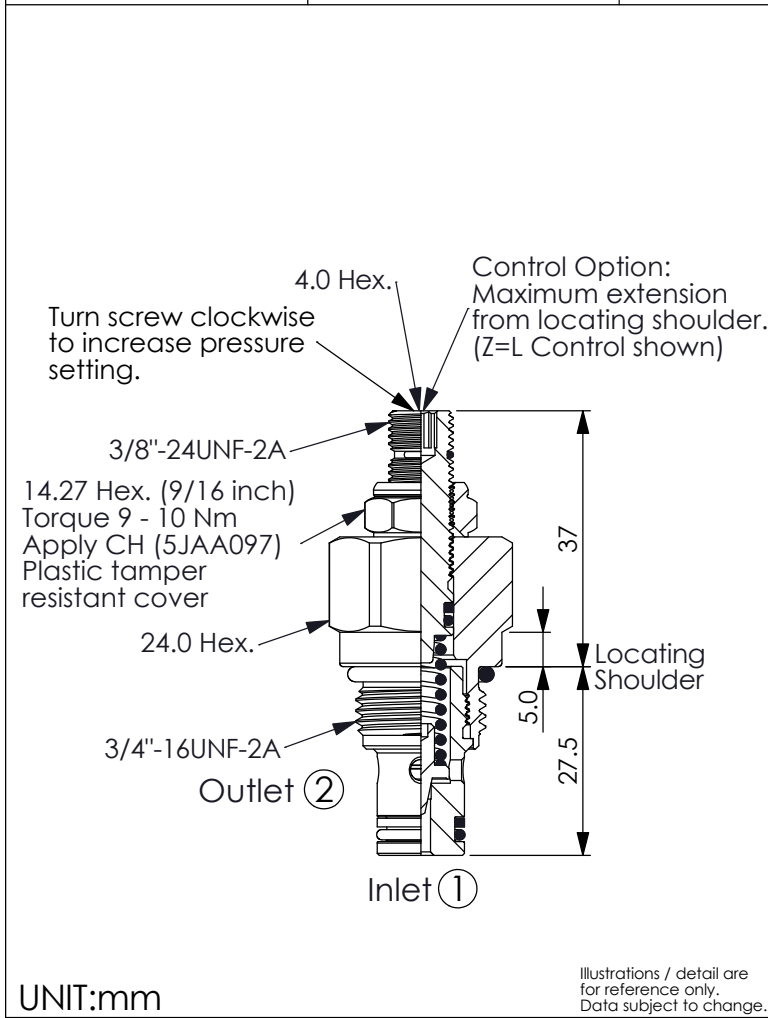
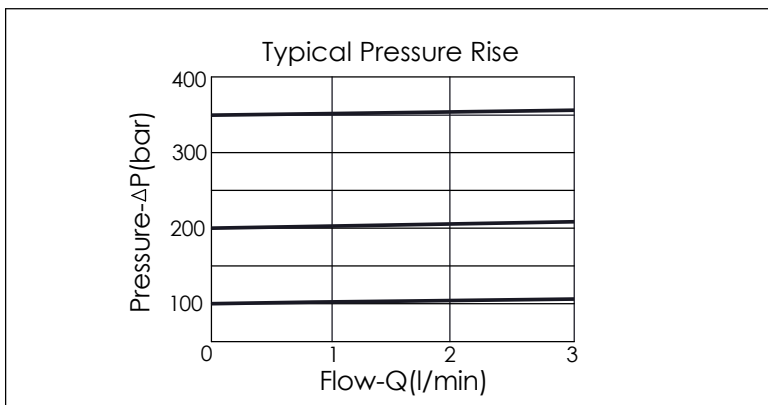


Ordering Code: **RD-08W-X-Y-Z-A**



TECHNICAL DATA		
Max. Operating pressure:	350 bar	
Rated flow:	3	l/min
Cavity-Tooling:	08W-2	
Installation torque:	25 - 35	Nm
Weight:	0.11 (Z=L)	kg



X	OPERATION	
23	Direct Acting ① to ② (P to T)	
	<ul style="list-style-type: none"> Response Time-Typical (2 ms) Maximum Leakage Approximately (5 drops/min. to 85% of nominal setting) Dirt tolerant 	

Y	PRESSURE SETTING	
A	7 - 210 bar	(70 bar Standard Setting)
B	3.5 - 105 bar	(70 bar Standard Setting)
C	10.5 - 420 bar	(70 bar Standard Setting)
D	1.7 - 55 bar	(28 bar Standard Setting)
E	1.7 - 28 bar	(14 bar Standard Setting)
W	10.5 - 315 bar	(70 bar Standard Setting)
• We also provide 50 - 350 bar option. Please consult our sales department if you need it.		

Z	OPTIONS	
L	Leakproof hex. socket screw.	
K	Handknob with Lock Knob. (Order Code: 6ZAK001)	
T	Three-winged Handknob Kit.	