

Ordering Code: **RD-18A-X-Y-Z**

Turn screw clockwise to increase pressure setting.

4.0 Hex. Control Option: Maximum extension from locating shoulder. (Z=L Control shown)

3/8"-24UNF-2A

14.27 Hex. (9/16 inch)
Torque 9 - 10 Nm
Apply CH (5JAA097)
Plastic tamper resistant cover

Ø40

41.2 Hex. (1-5/8 inch)

M48x2.0

Outlet ②

Inlet ①

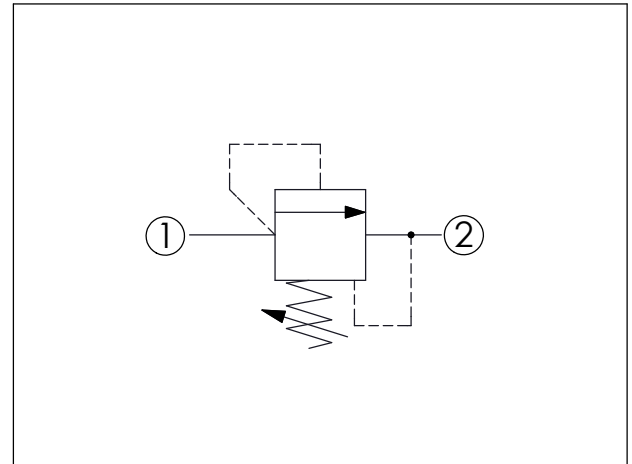
100

79.57 (Ref.)

Locating Shoulder

UNIT:mm

Illustrations / detail are for reference only. Data subject to change.



TECHNICAL DATA

Max. Operating pressure: 350 bar

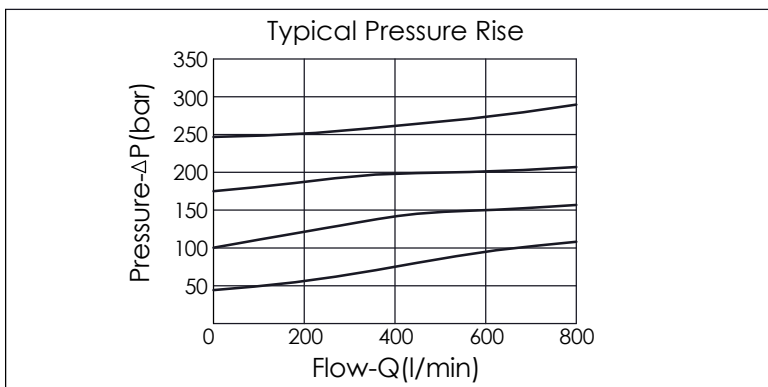
Rated flow: 760 l/min

Cavity-Tooling: 18A-2 (18AB-2)

Installation torque: 465 - 500 Nm

Weight: 1.46 kg

Will accept maximum pressure at port ② ; suitable for use in cross port relief circuits.



X	OPERATION	
25	Direct Acting	① to ② (P to T)
	<ul style="list-style-type: none"> Response Time-Typical (2 ms) Maximum Leakage Approximately (5 drops/min. to 85% of nominal setting) Dirt tolerant 	

Y	PRESSURE SETTING	
A	35 - 210 bar	(70 bar Standard Setting)
B	20 - 105 bar	(70 bar Standard Setting)
C	70 - 420 bar	(70 bar Standard Setting)
D	14 - 55 bar	(28 bar Standard Setting)
E	7 - 28 bar	(14 bar Standard Setting)
S	3.5 - 14 bar	(7 bar Standard Setting)
W	55 - 315 bar	(70 bar Standard Setting)

Z	OPTIONS	
L	Leakproof hex. socket screw.	
LP	Leakproof hex. socket screw. With stainless steel external metal components	
K	Handknob with Lock Knob. (Order Code: 6ZAK001)	