

Ordering Code: **RD-13A-X-Y-Z**

Turn screw clockwise to increase pressure setting.

Control Option: Maximum extension from locating shoulder. (Z=L Control shown)

4.0 Hex.

14.0 Hex. Torque 6 - 7 Nm

22.22 Hex. (7/8 inch)

M20x1.5

Outlet ②

Inlet ①

50

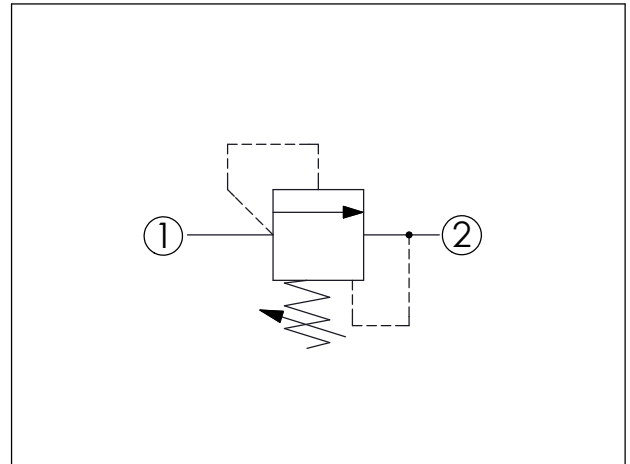
5.5

35.05 (Ref.)

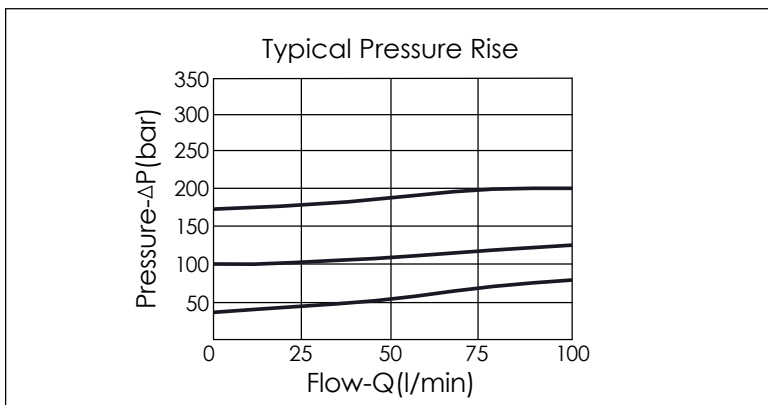
Locating Shoulder

UNIT:mm

Illustrations / detail are for reference only. Data subject to change.



TECHNICAL DATA		
Max. Operating pressure:	350 bar	
Rated flow:	95	l/min
Cavity-Tooling:	13A-2	
Installation torque:	40 - 50	Nm
Weight:	0.13	kg
Will accept maximum pressure at port ② ; suitable for use in cross port relief circuits.		



X	OPERATION	
25	Direct Acting	① to ② (P to T)
<ul style="list-style-type: none"> Response Time-Typical (2 ms) Maximum Leakage Approximately (5 drops/min. to 85% of nominal setting) Dirt tolerant 		

Y	PRESSURE SETTING	
A	35 - 210 bar	(70 bar Standard Setting)
B	20 - 105 bar	(70 bar Standard Setting)
C	70 - 420 bar	(70 bar Standard Setting)
D	14 - 55 bar	(28 bar Standard Setting)
E	7 - 28 bar	(14 bar Standard Setting)
S	3.5 - 14 bar	(7 bar Standard Setting)
W	55 - 315 bar	(70 bar Standard Setting)

Z	OPTION	
L	Leakproof hex. socket screw.	
LP	Leakproof hex. socket screw. With stainless steel external metal components	